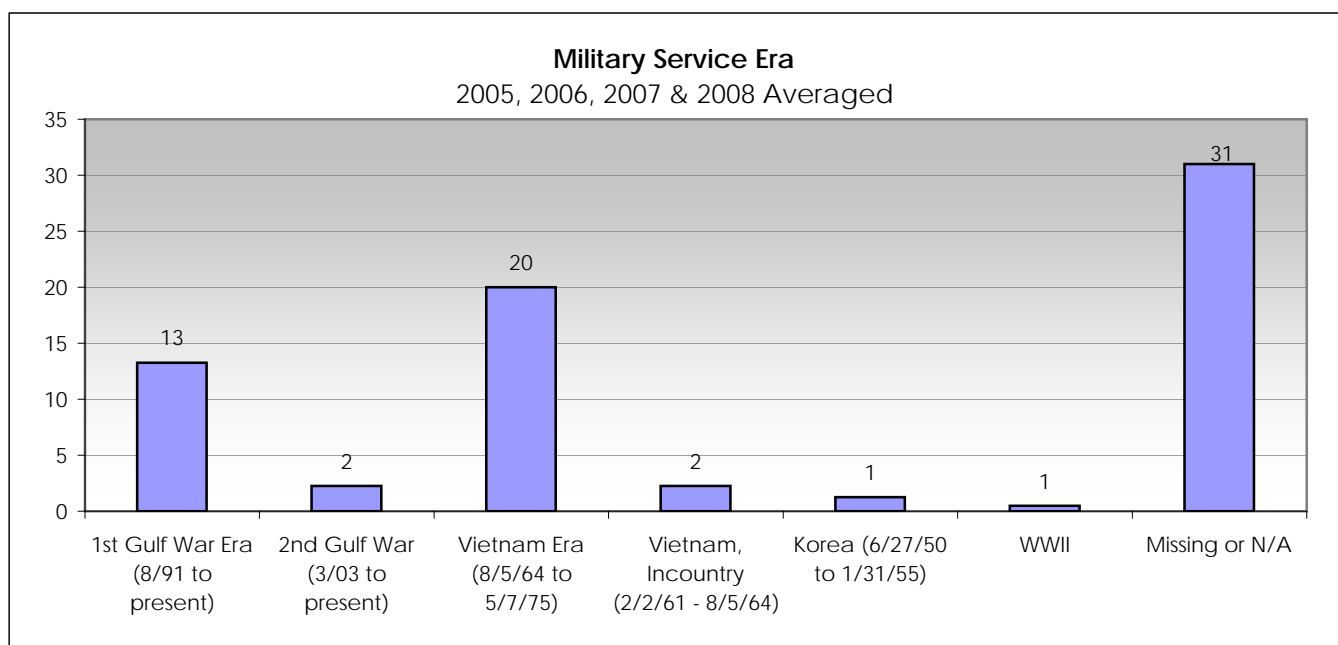
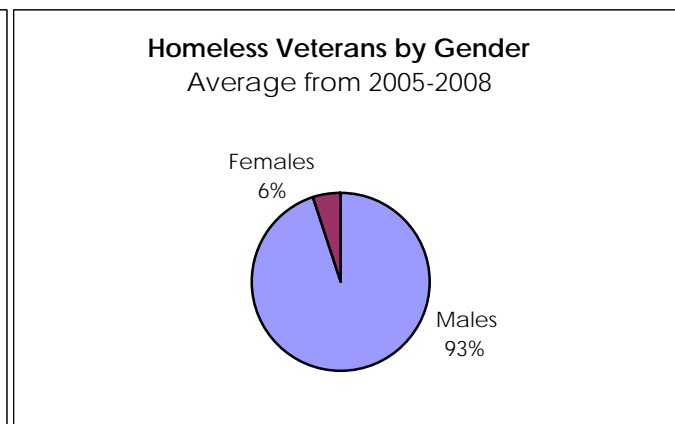
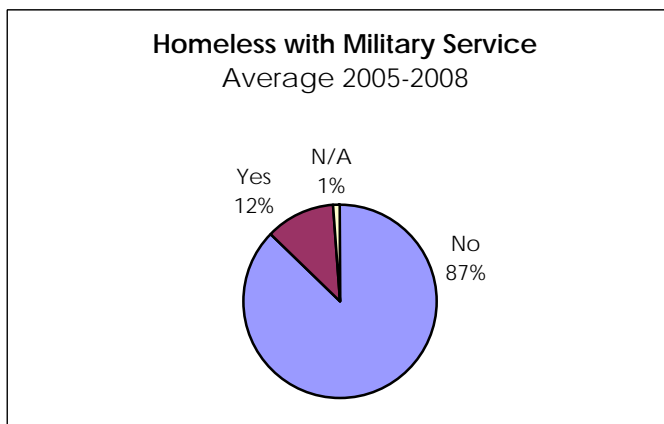
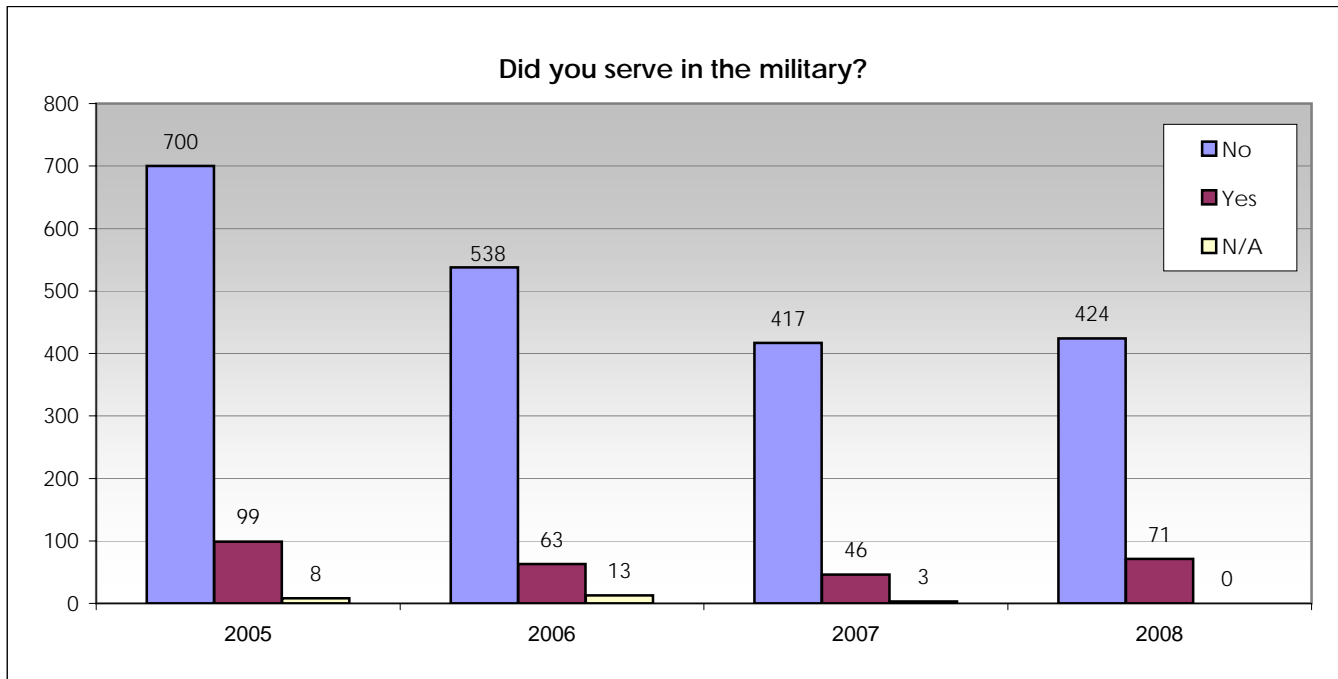
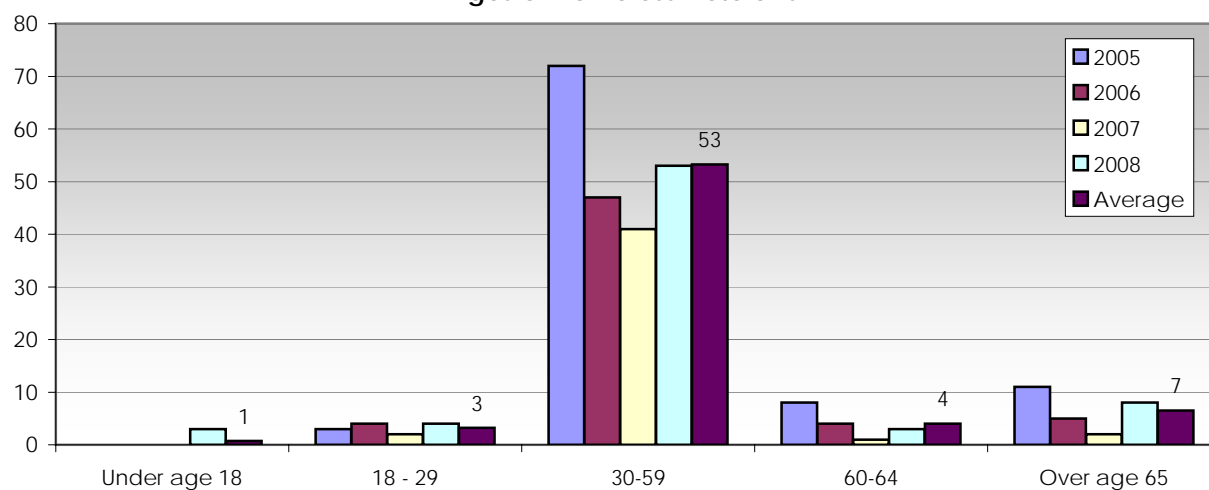


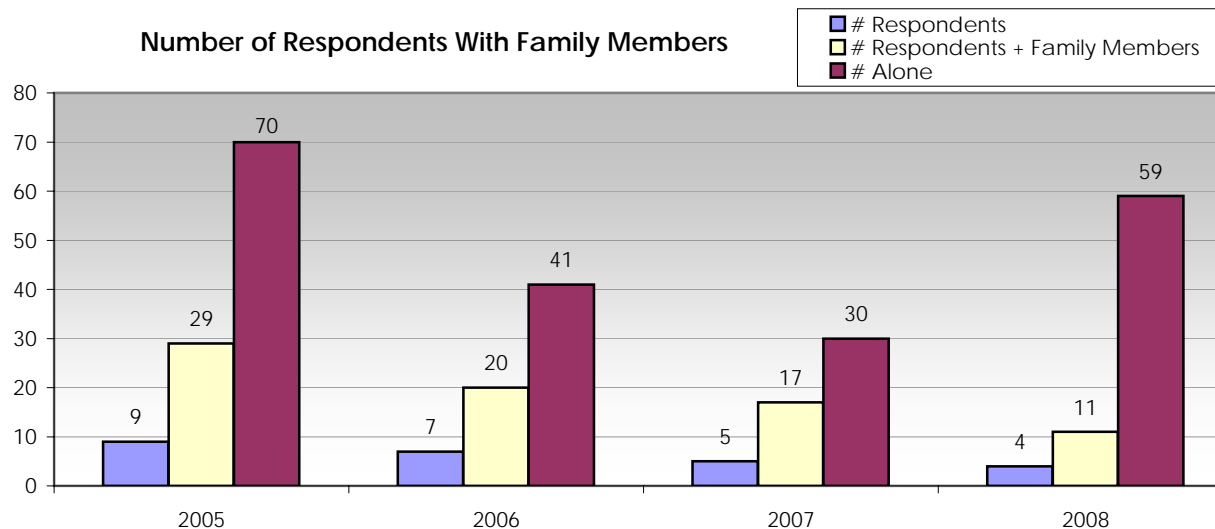
MONTANA HOMELESS SURVEY DATA  
VETERANS



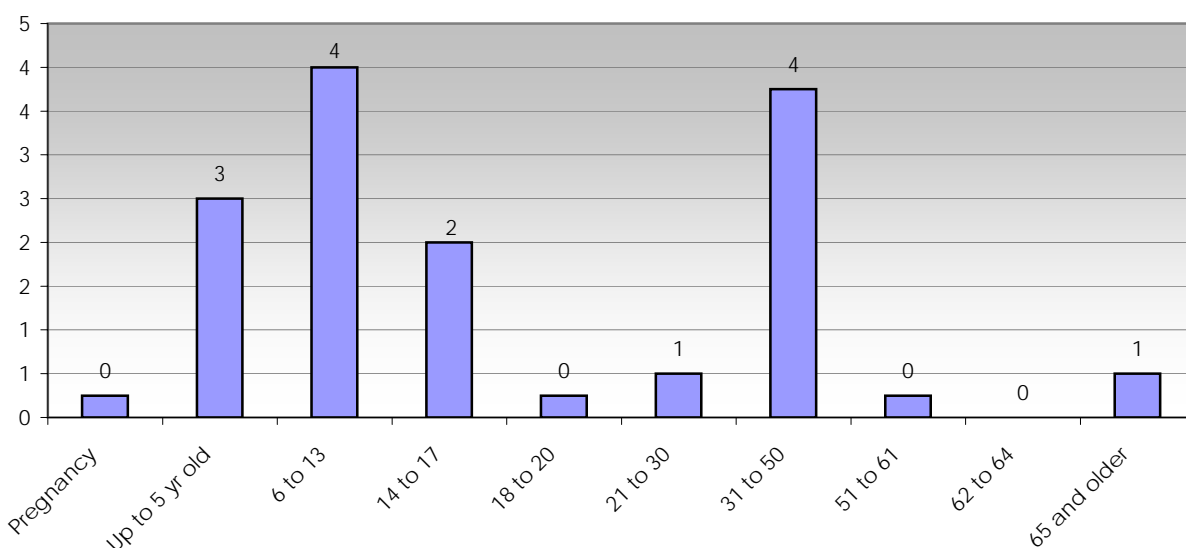
### Ages of Homeless Veterans



### Number of Respondents With Family Members

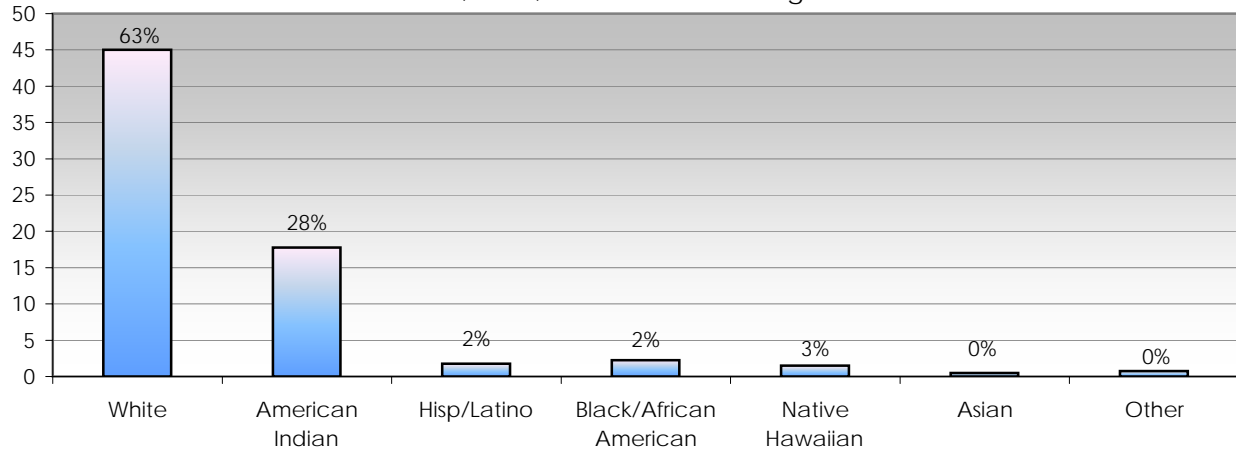


### Age of Accompanying Family Members 2005, 2006, 2007 & 2008 Averaged



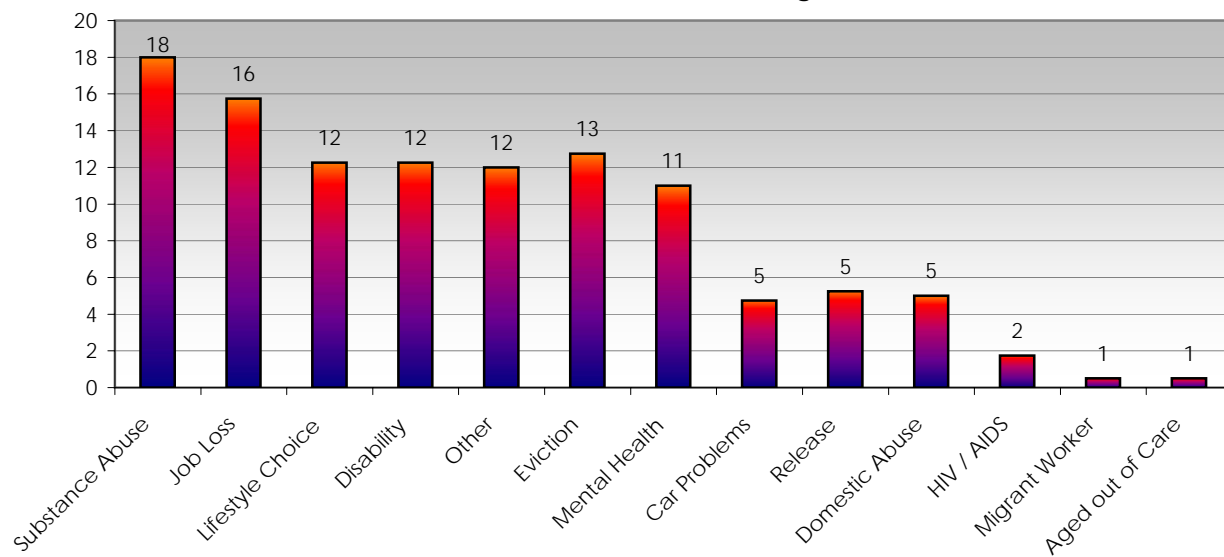
### Race / Ethnicity of Homeless Veterans in Billings

2005, 2006, 2007 & 2008 Averaged



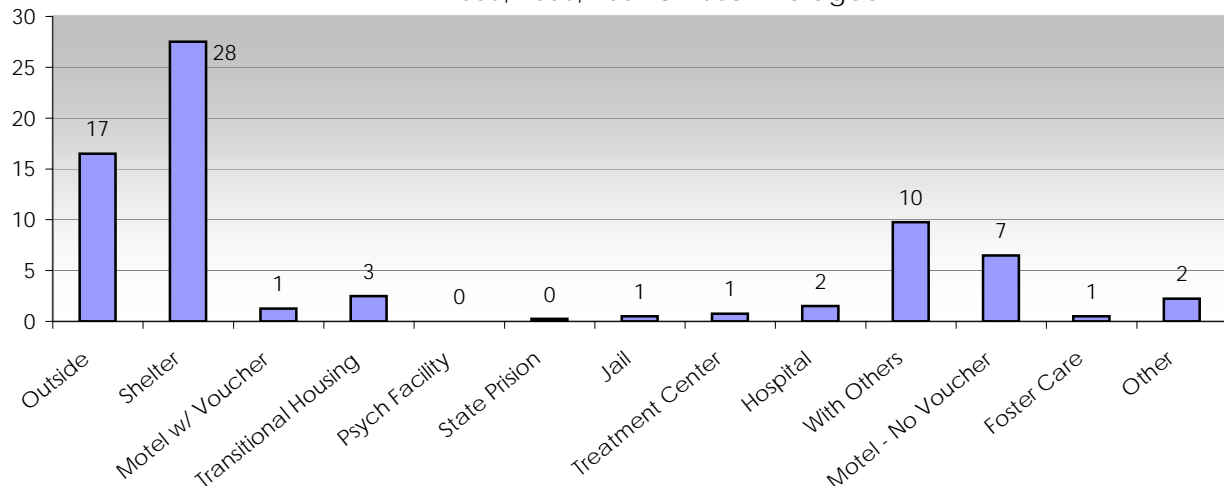
### Causes of Homelessness for Veterans in Billings

2005, 2006, 2007 & 2008 Averaged



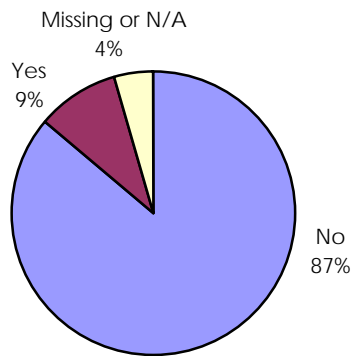
### Location Slept on Night of Point-In-Time Survey in Billings

2005, 2006, 2007 & 2008 Averaged



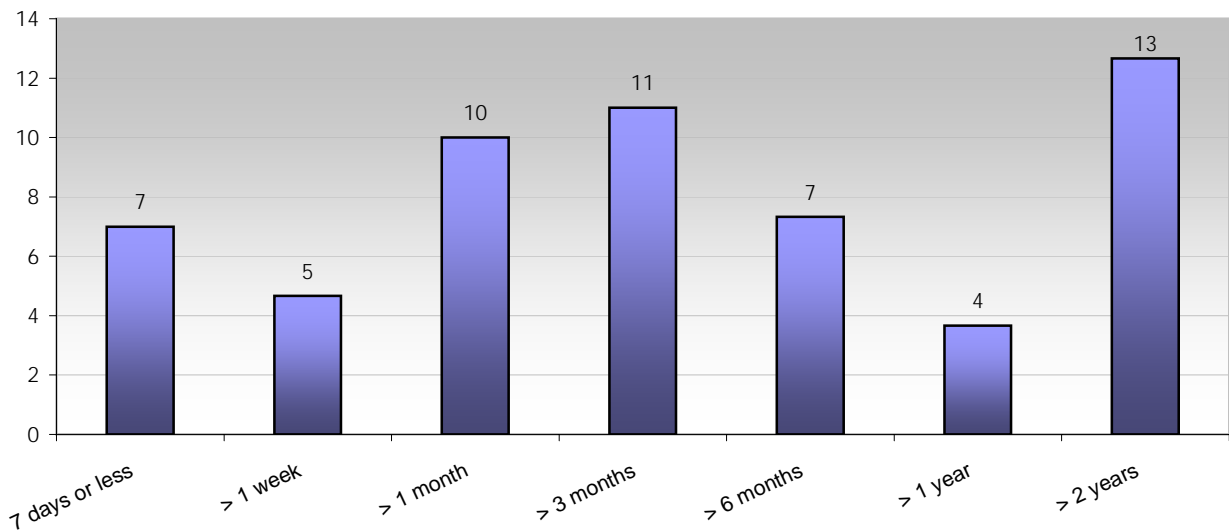
### Being Asked to Leave Within One Week

Averaged from 2006, 2007 & 2008



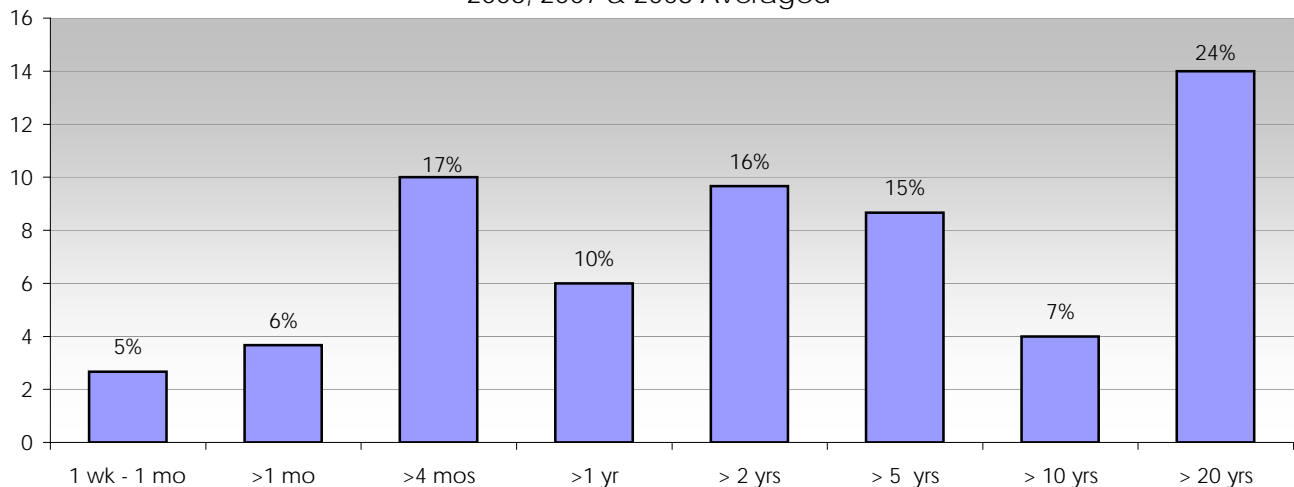
### Length of Time Homeless

2006, 2007 & 2008 Averaged

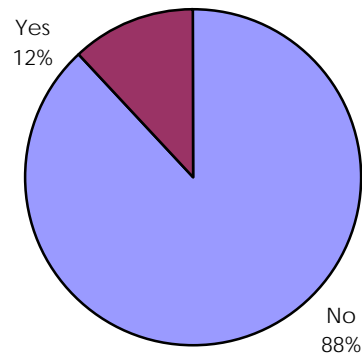


### Length of Residency in Billings

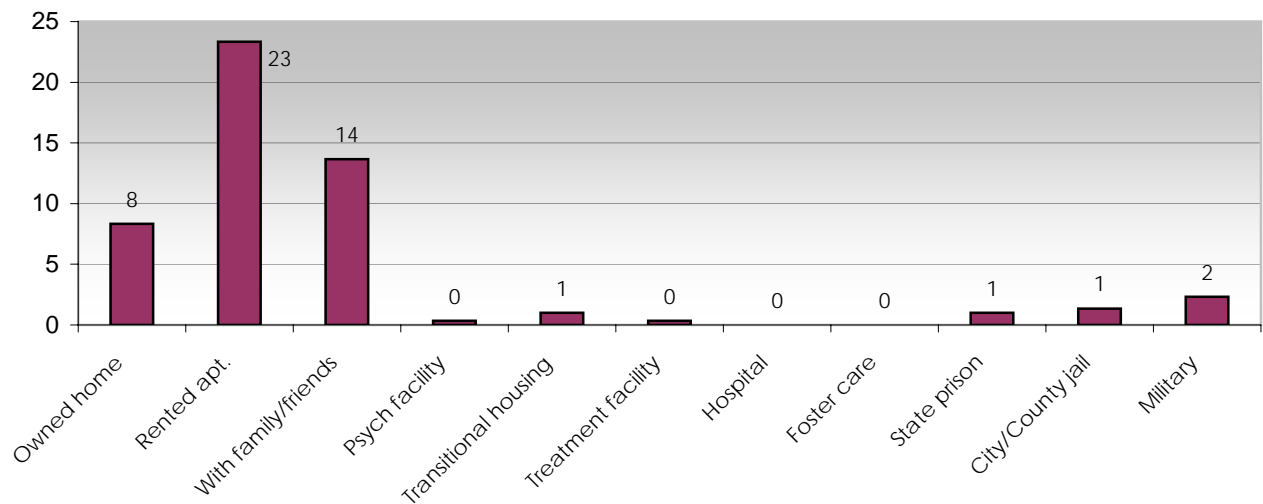
2006, 2007 & 2008 Averaged



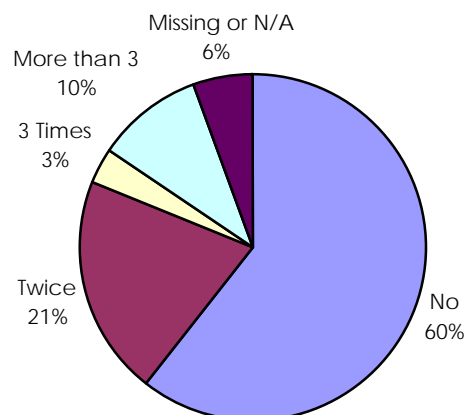
**Lifetime Resident of Billings**  
2006, 2007 & 2008 Averaged



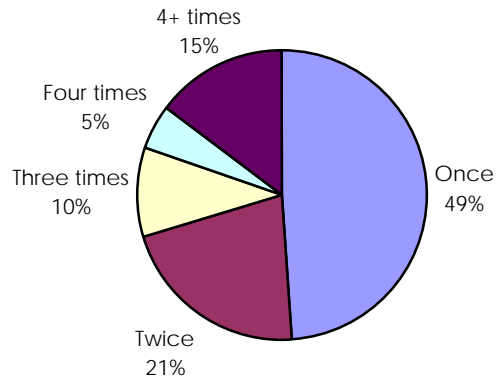
**Previous Living Arrangements**  
2006, 2007 & 2008 Averaged



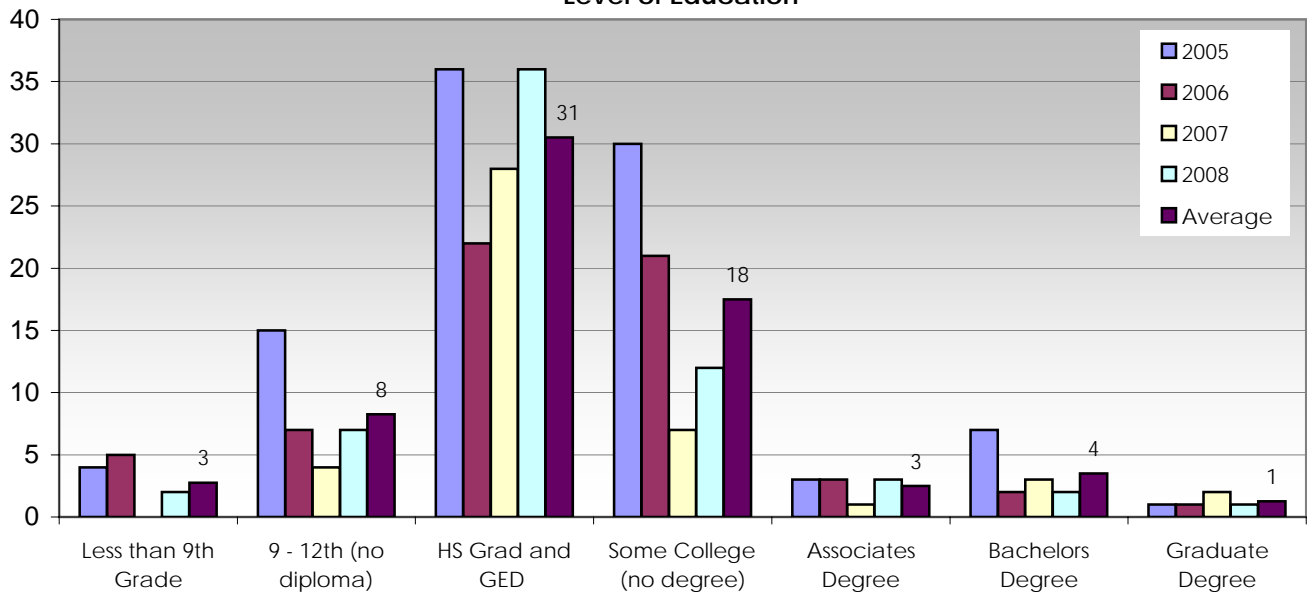
**Have you been homeless more than once in the past year?**  
2006, 2007 & 2008 Averaged



**Number of Times Homeless in Past 3 Yrs**  
2005, 2006, 2007 & 2008 Averaged



**Level of Education**



**Sources of Income**

2005, 2006, 2007 & 2008 Averaged

