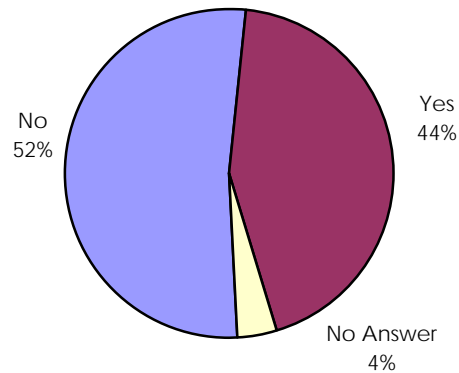


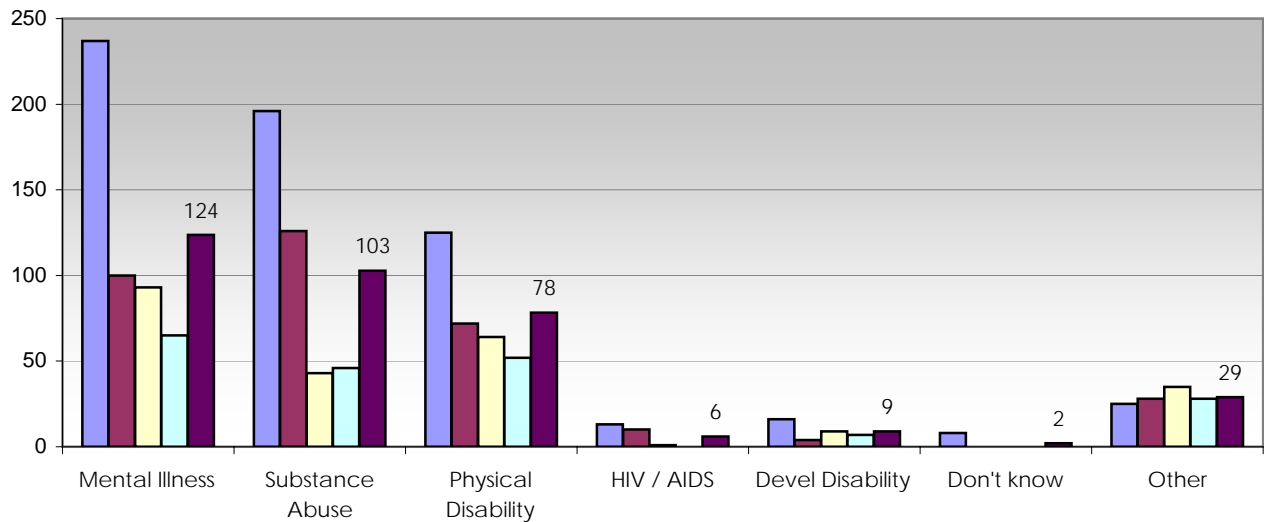
MONTANA HOMELESS SURVEY DATA
DISABLED

Percent of Homeless Population with Disability
Average 2005-2008



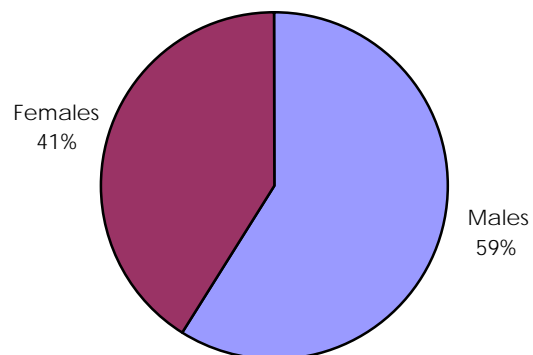
Types of Disabilities

2005 2006 2007 2008 Average

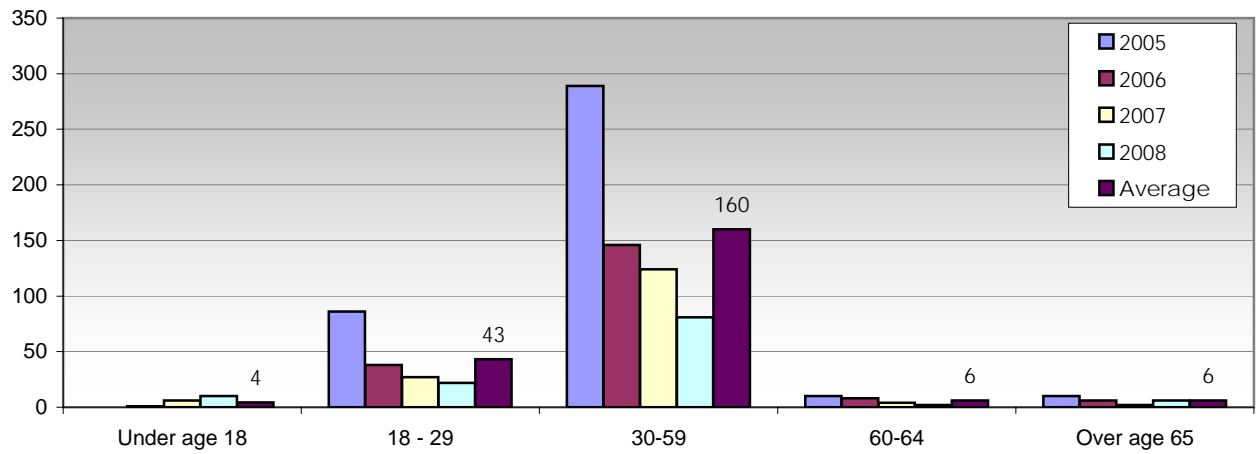


Disabled by Gender

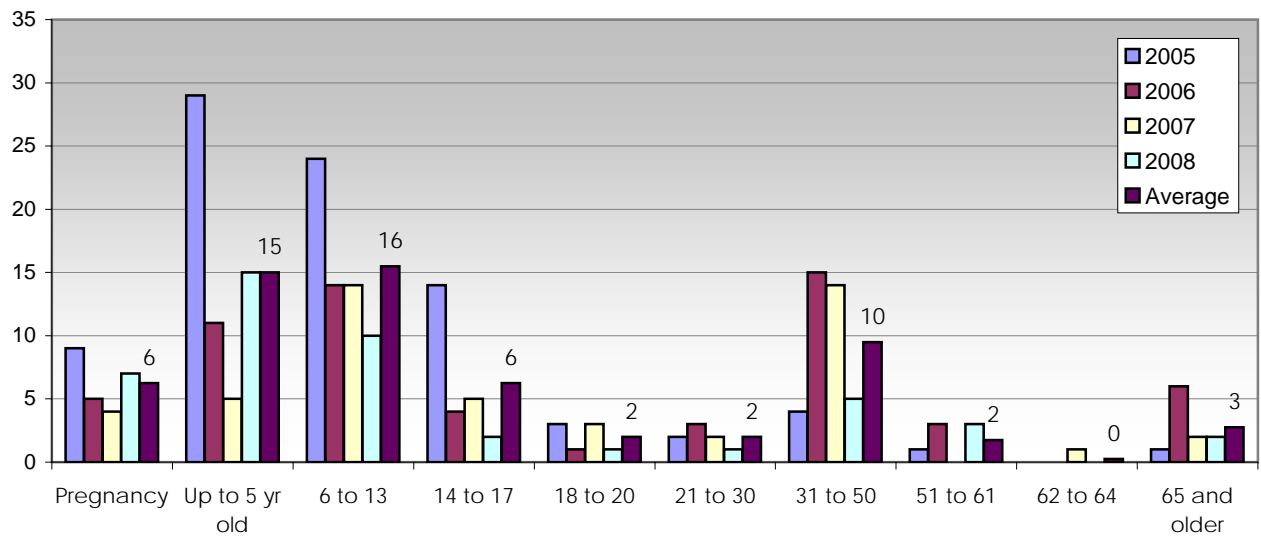
2005, 2006, 2007 & 2008 Averaged



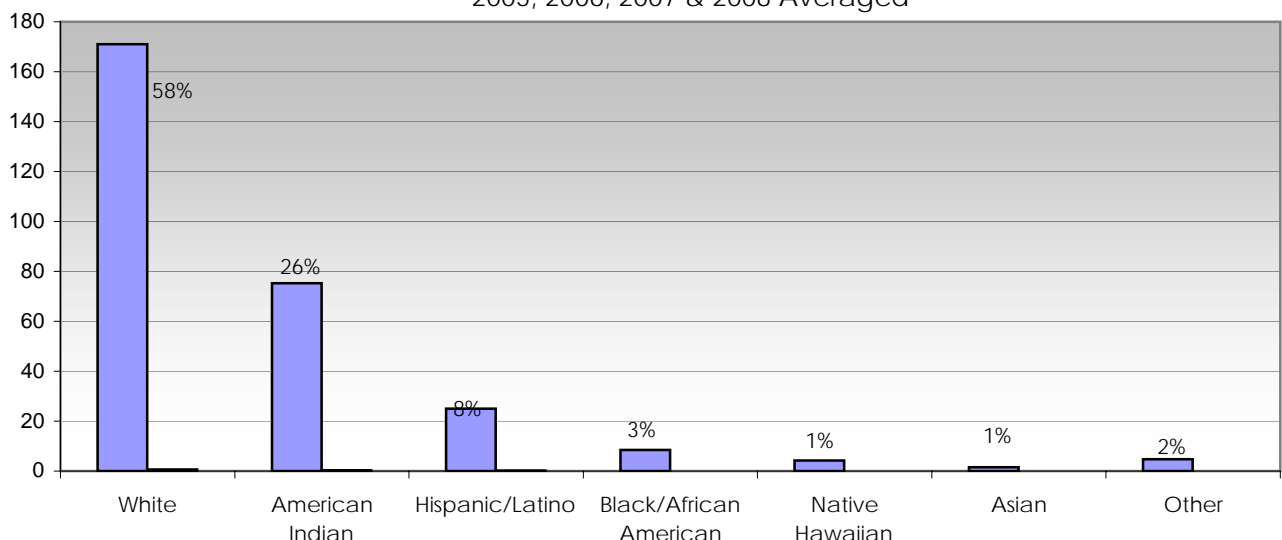
Age of Billings Respondents



Ages of Family Members Accompanying Disabled Homeless

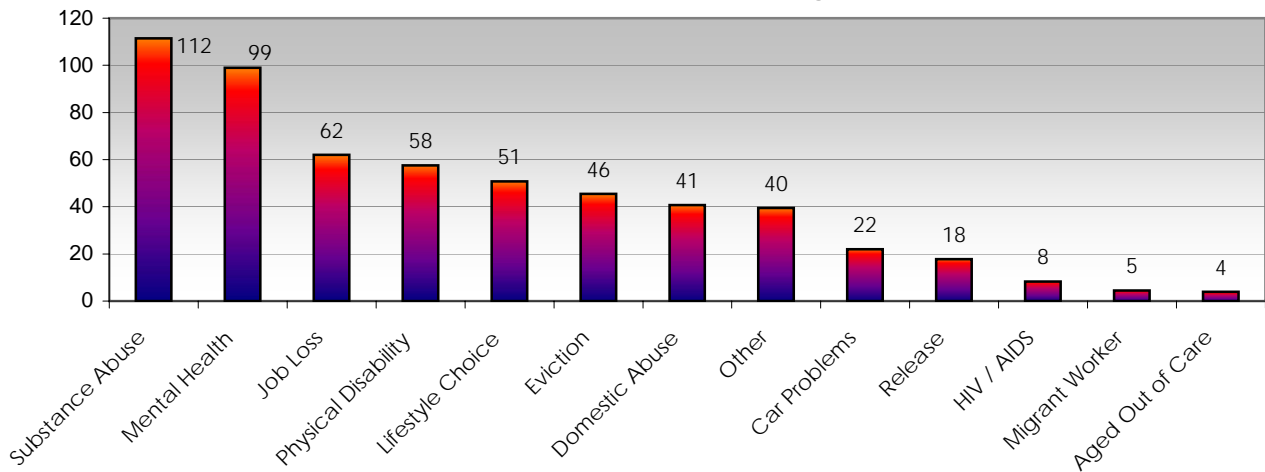


Race / Ethnicity of Disabled
2005, 2006, 2007 & 2008 Averaged



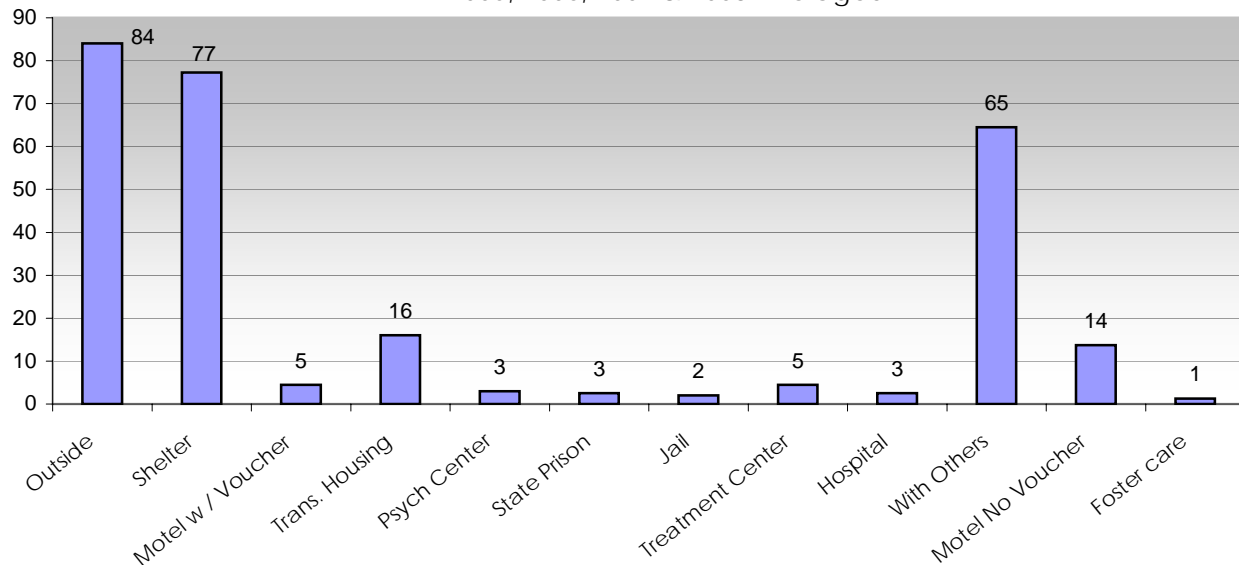
Causes of Homelessness for the Disabled

2005, 2006, 2007 & 2008 Averaged



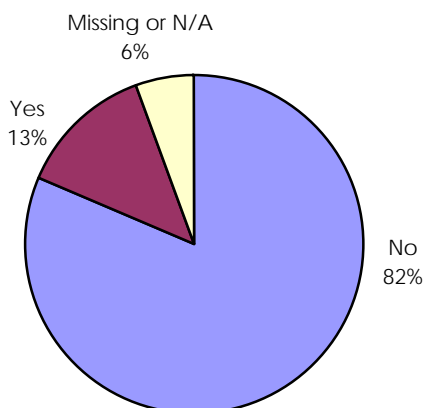
Location Slept on Night of Point-In-Time Survey in Billings

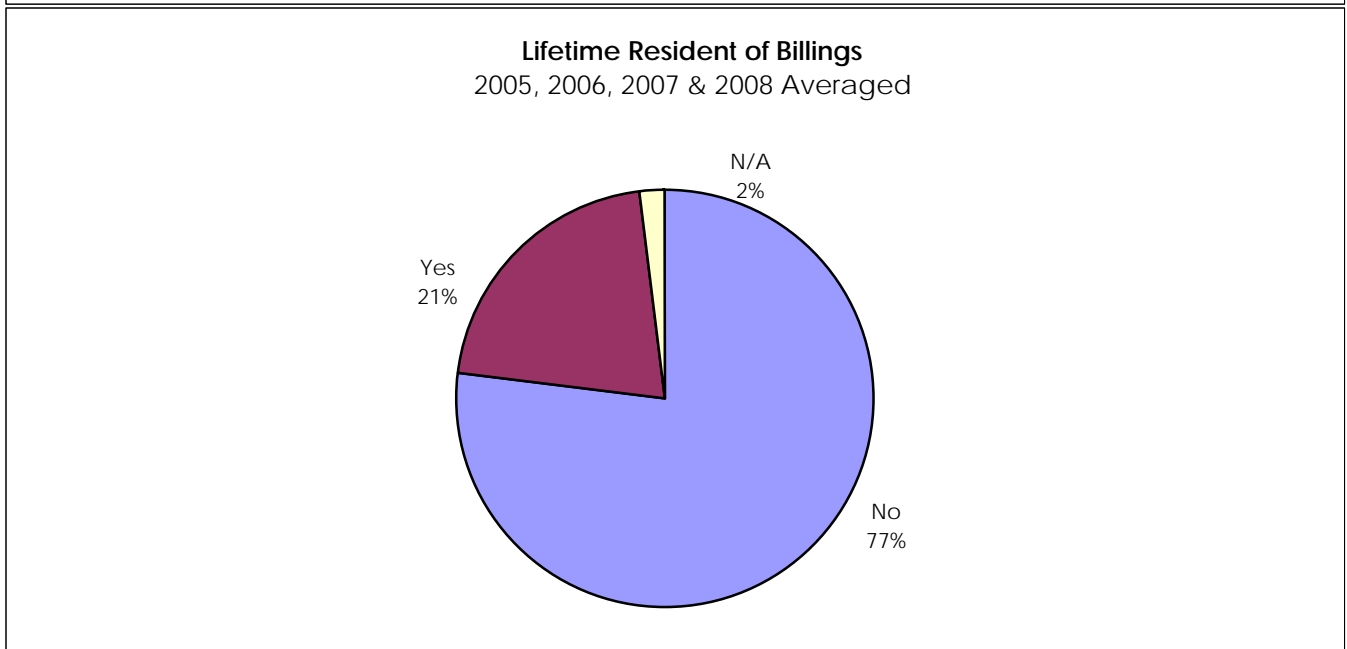
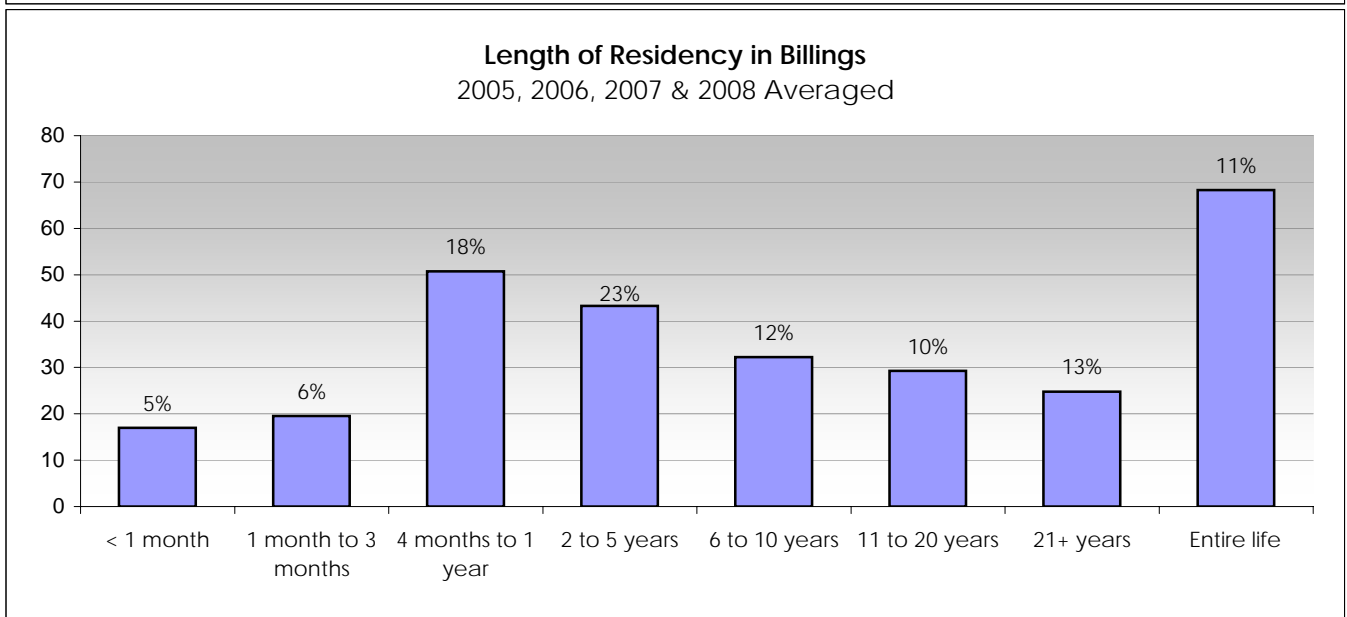
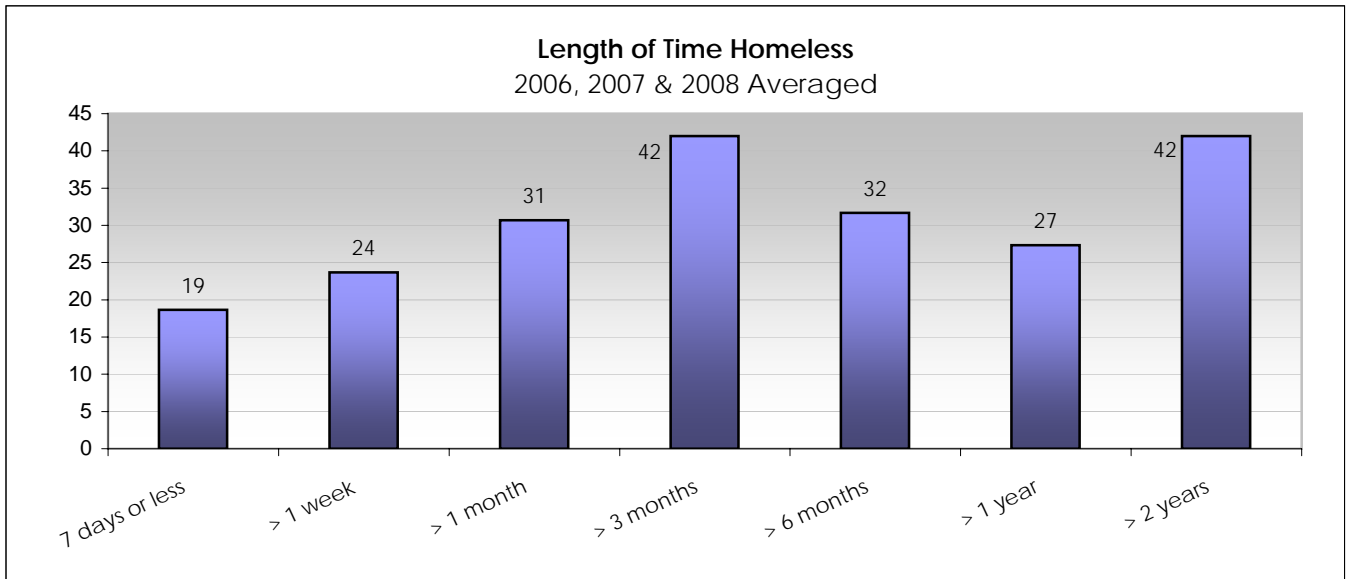
2005, 2006, 2007 & 2008 Averaged



Being Asked to Leave Within One Week

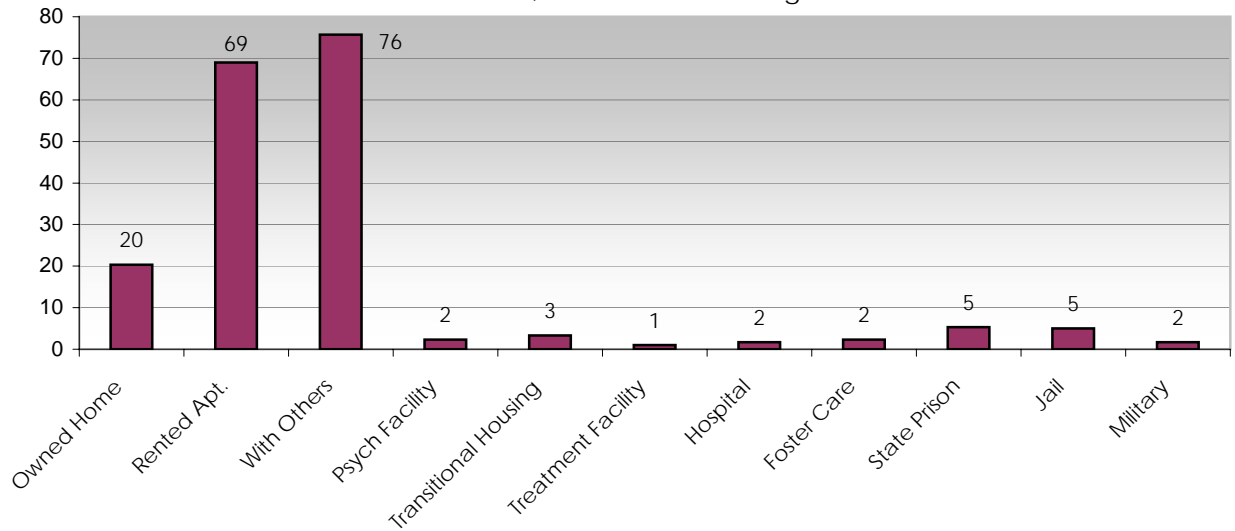
Averaged from 2006, 2007 & 2008





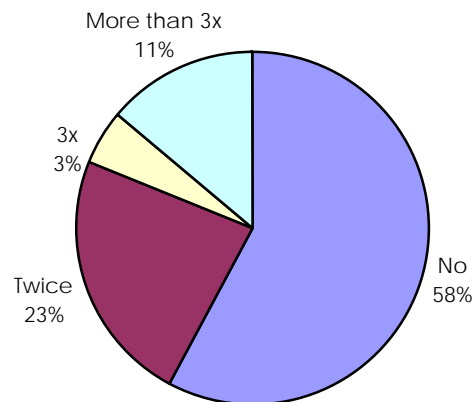
Previous Living Arrangements

2006, 2007 & 2008 Averaged



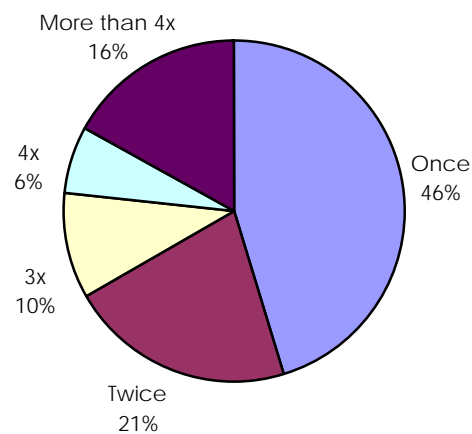
Have you been homeless more than once in the past year?

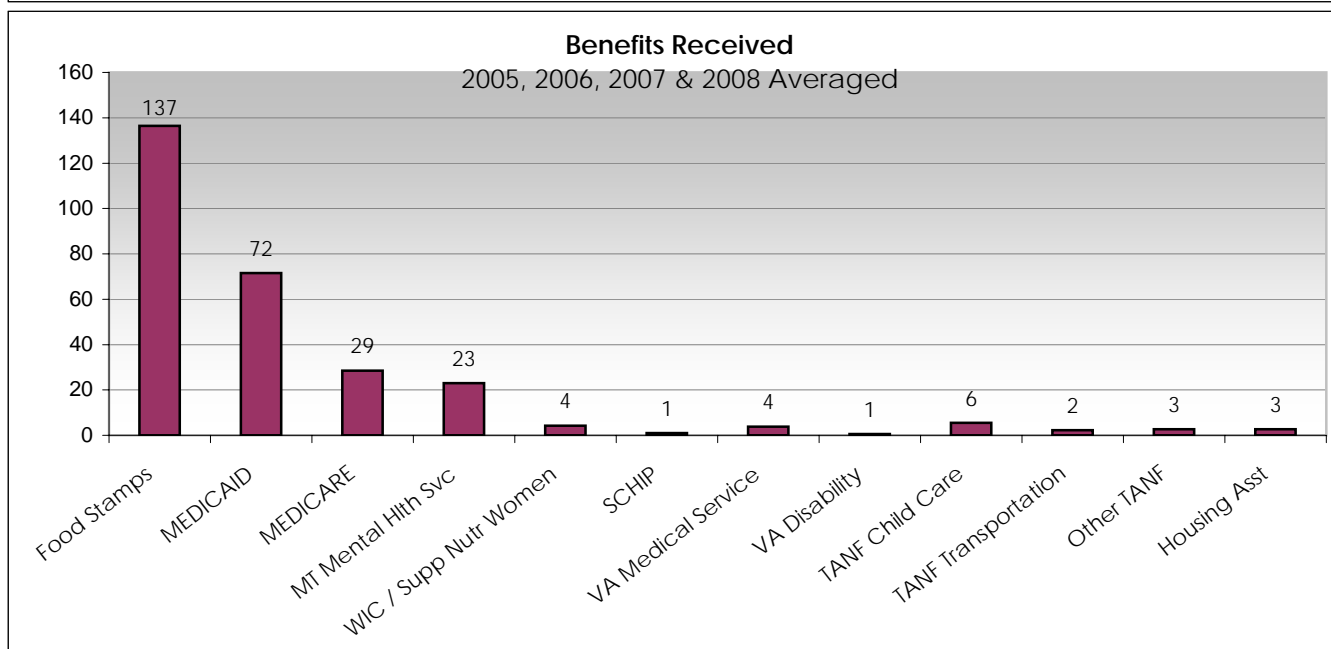
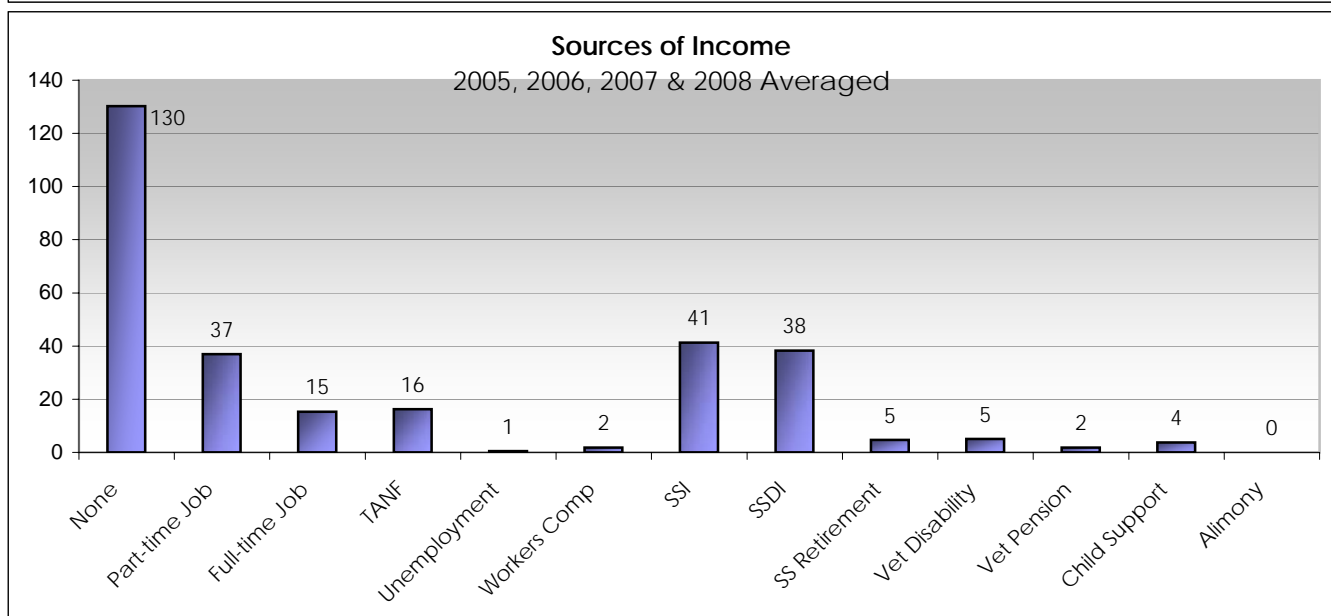
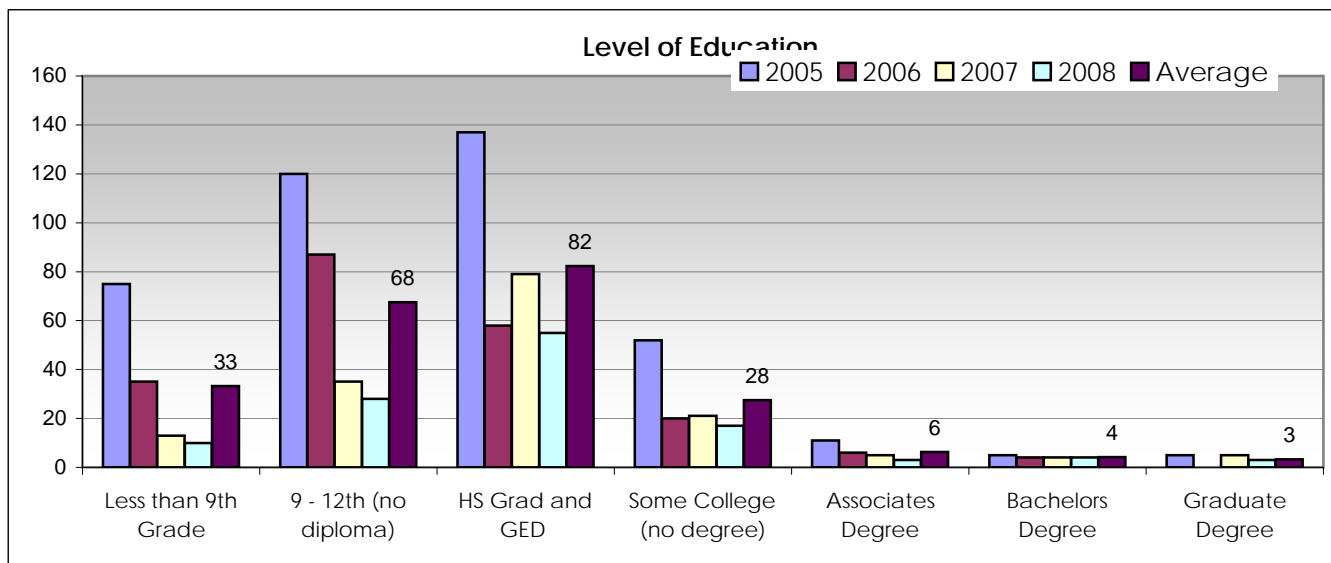
2006, 2007 & 2008 Averaged



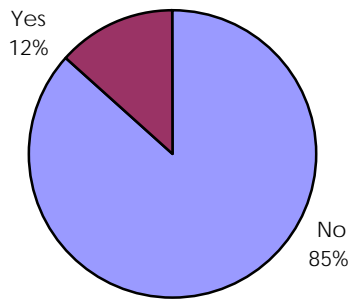
Number of Times Homeless in Last 3 Years

2005, 2006, 2007 & 2008 Averaged





Disabled with Military Service 2005, 2006, 2007 & 2008 Averaged



War Era Served

