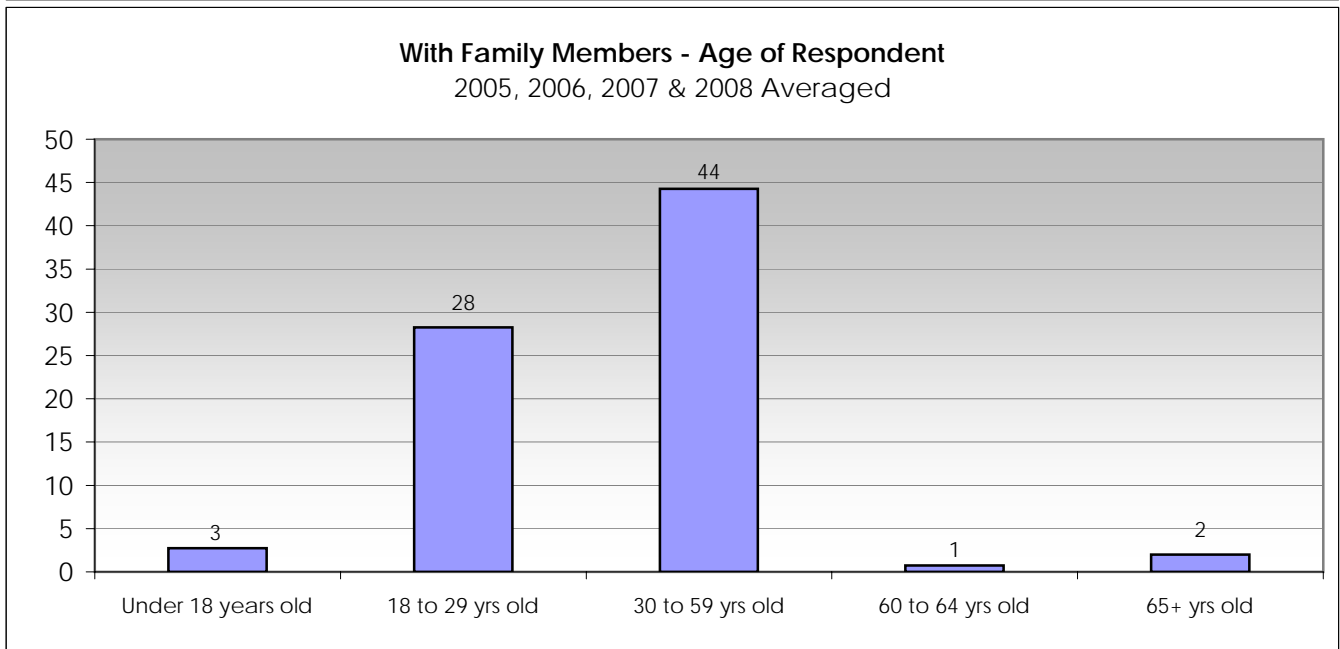
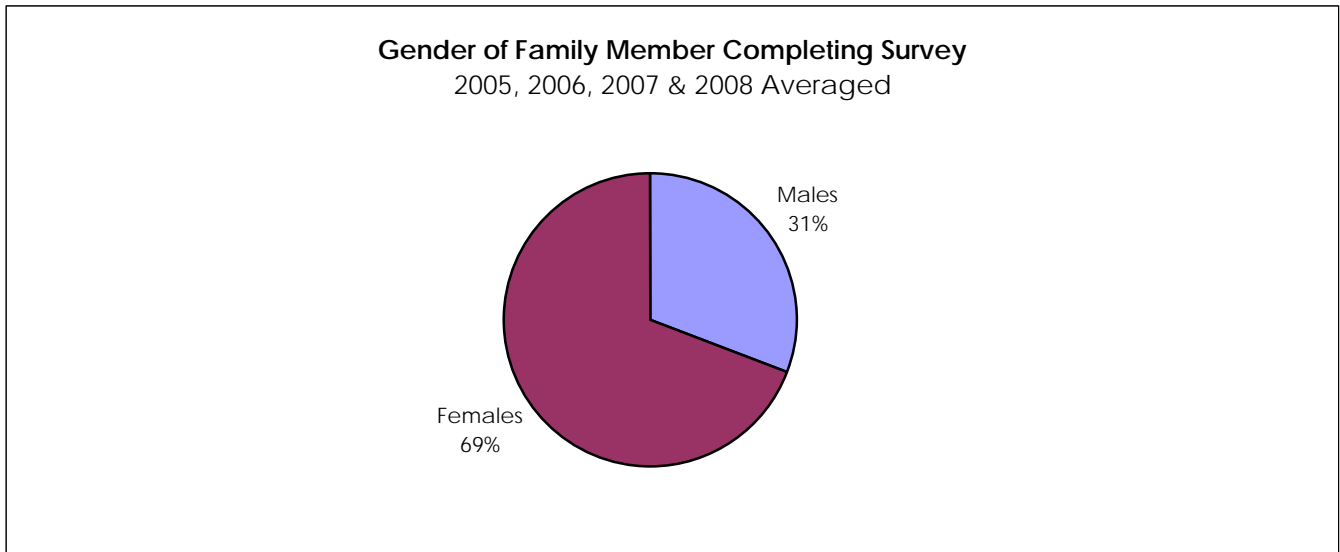
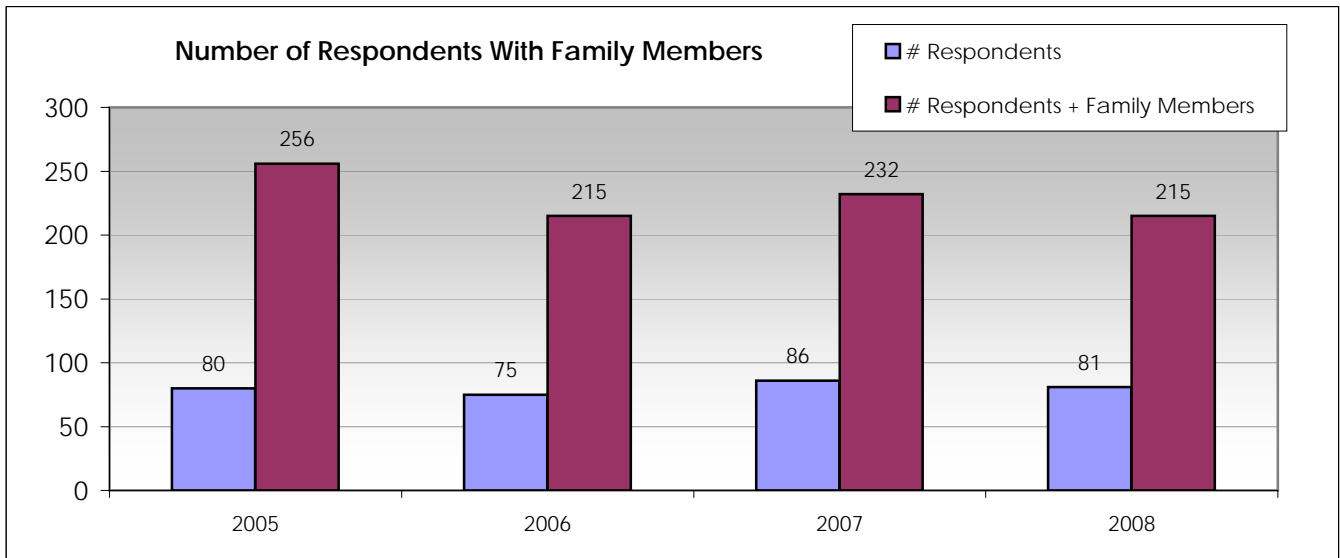
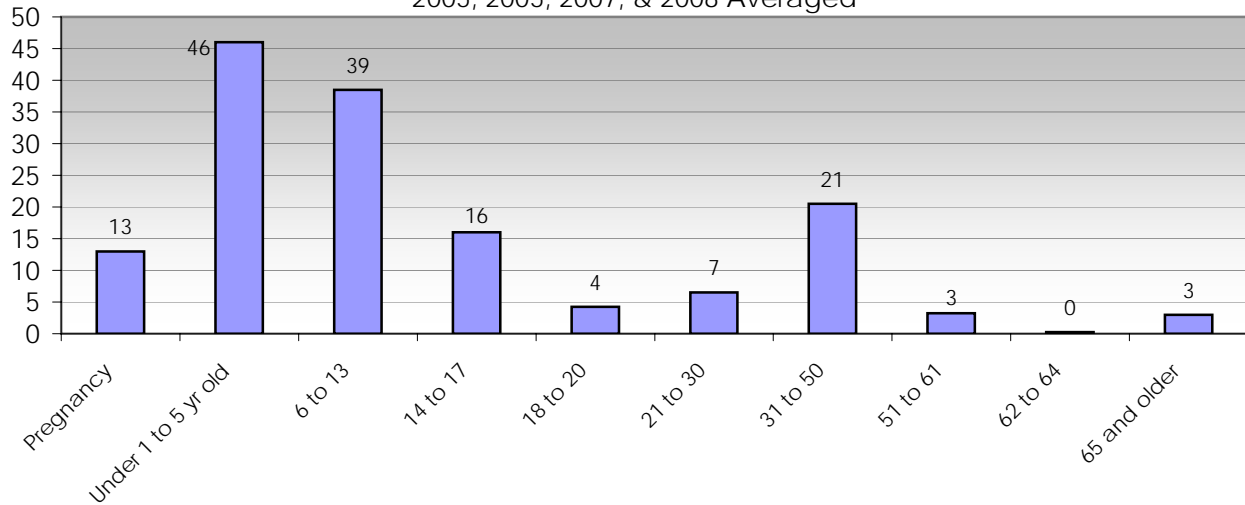


MONTANA HOMELESS SURVEY DATA
FAMILIES



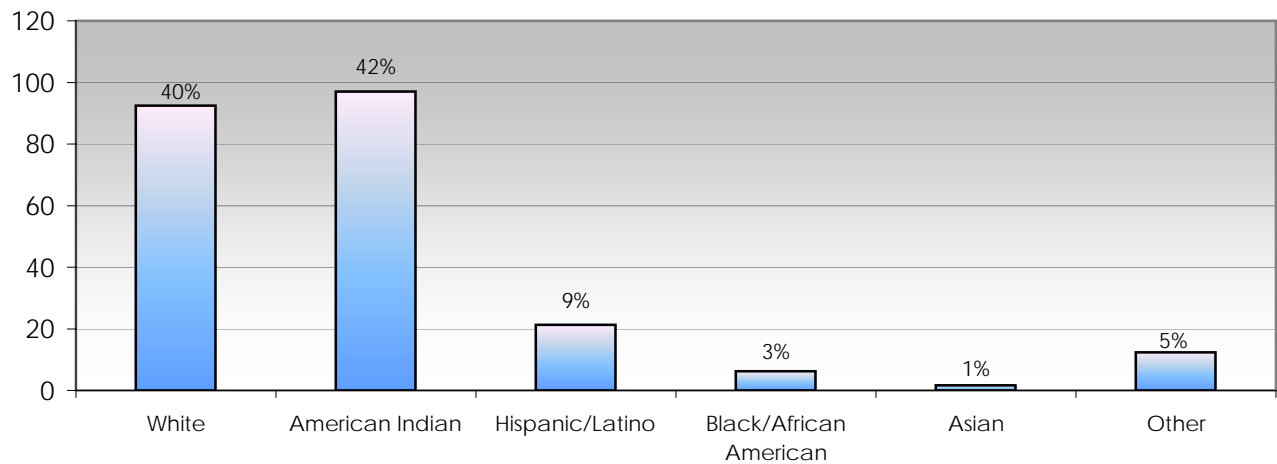
Age of Accompanying Family Members

2005, 2005, 2007, & 2008 Averaged



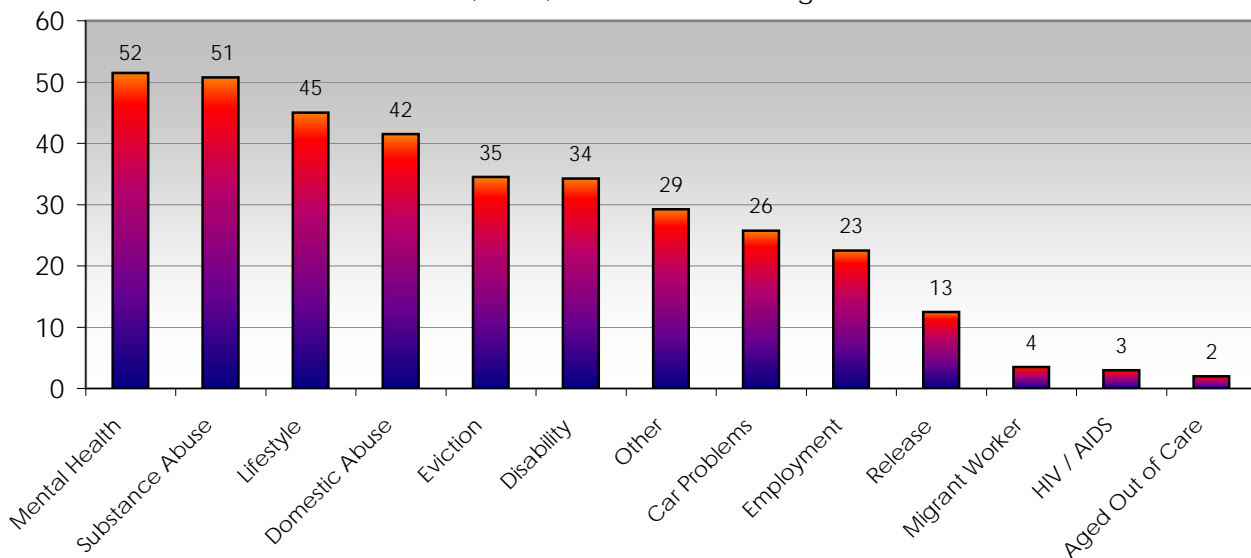
Race / Ethnicity of Homeless Families in Billings

2005, 2006, 2007 & 2008 Averaged



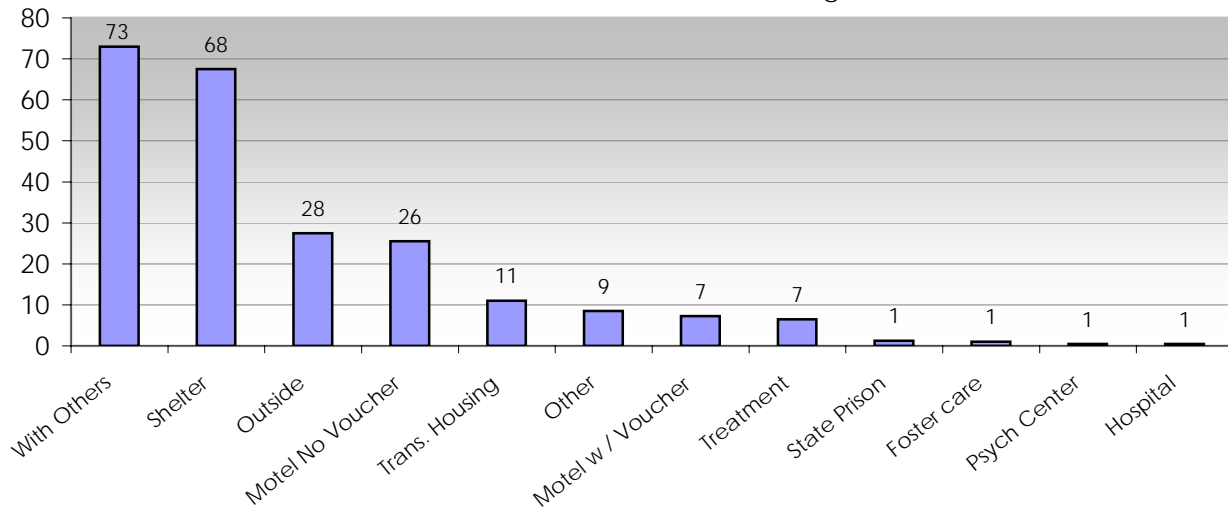
Causes of Homelessness for Families with Children in Billings

2005, 2006, 2007 & 2008 Averaged



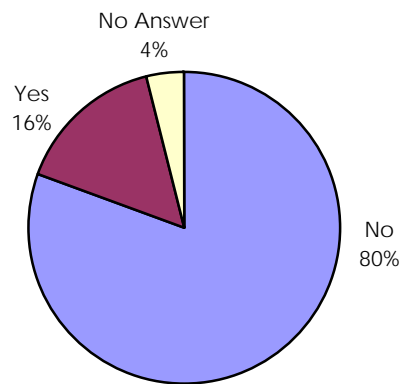
Location Slept on Night of Point-In-Time Survey in Billings

2005, 2006, 2007 & 2008 Averaged



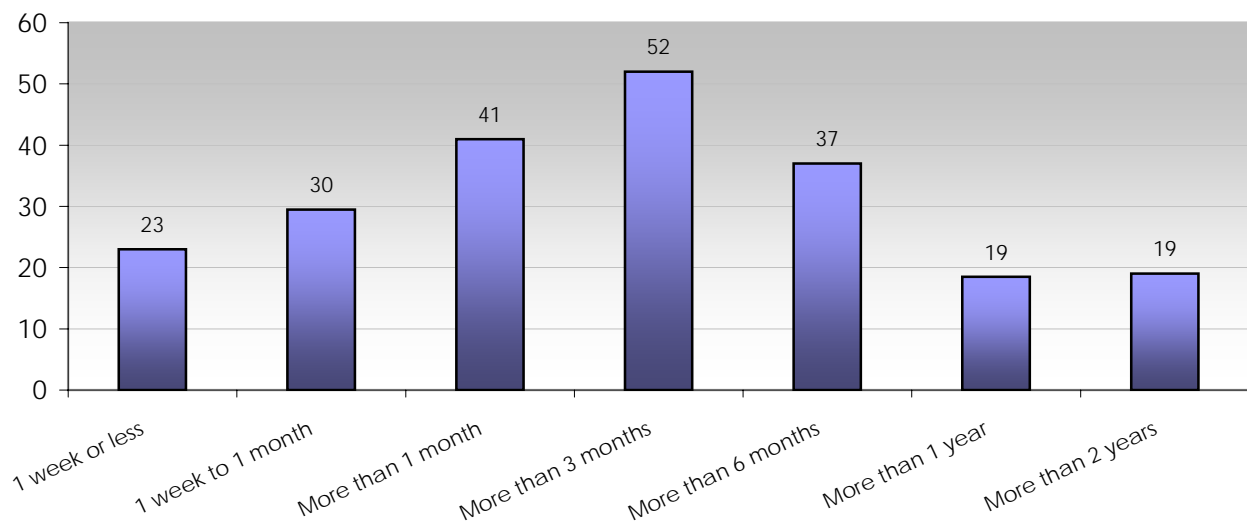
Being Asked to Leave Within One Week

Average from 2006, 2007 & 2008

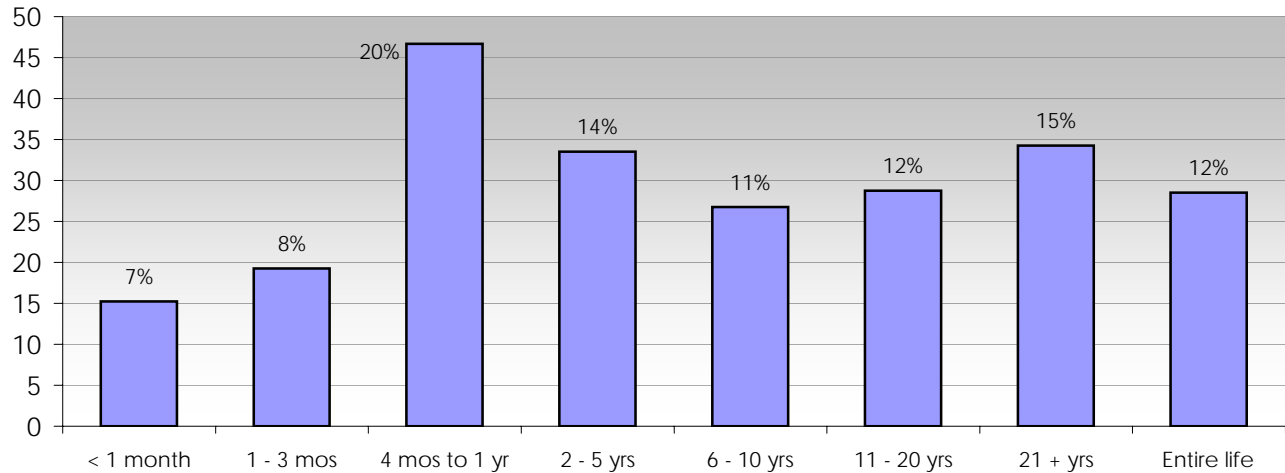


Length of Time Homeless

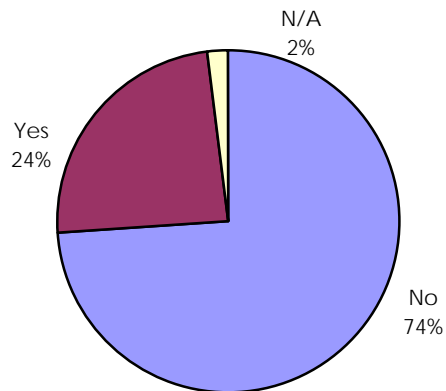
2006, 2007 & 2008 Averaged



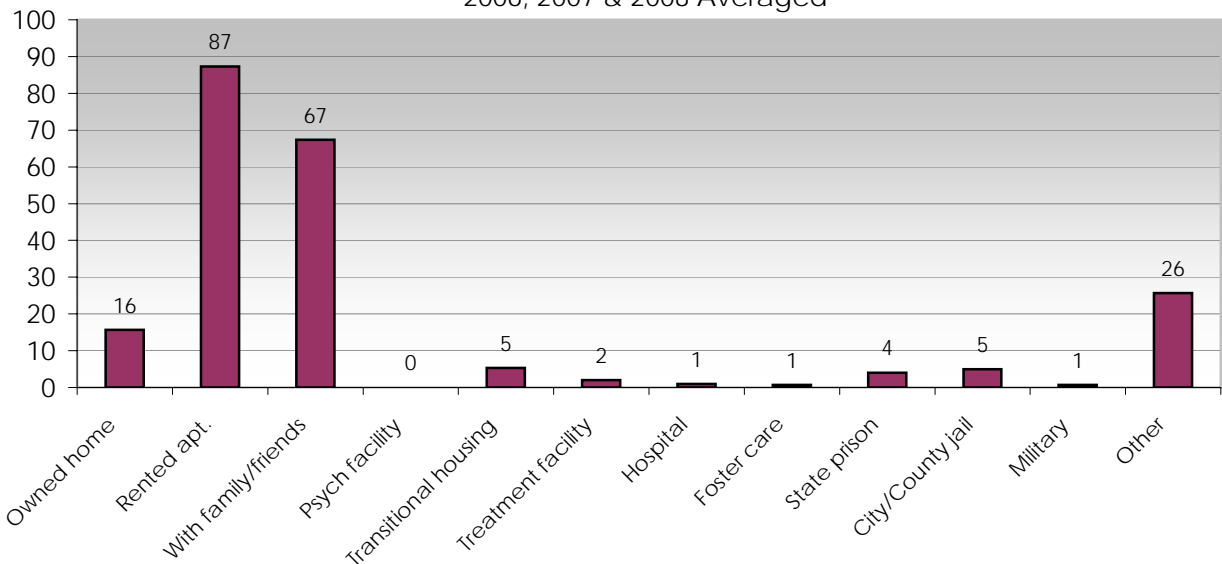
Length of Residency in Billings
2005, 2006, 2007 & 2008 Averaged



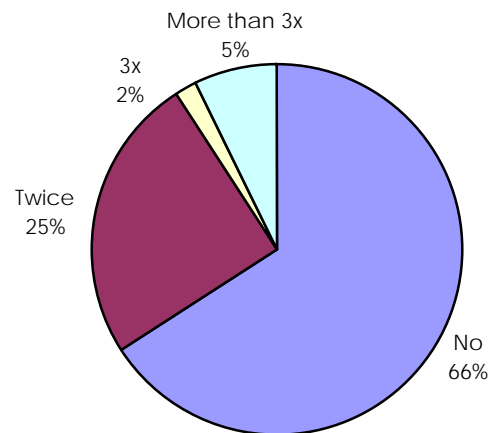
Lifetime Resident of Billings
2005, 2006, 2007 & 2008 Averaged



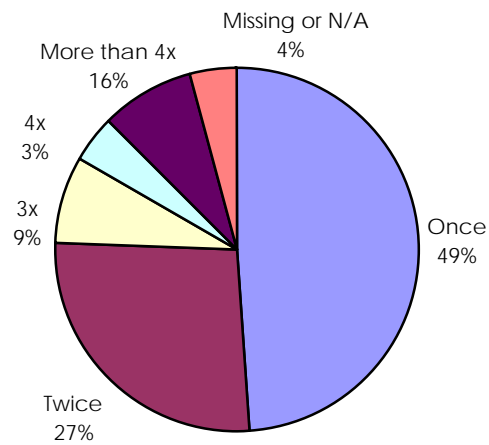
Previous Living Arrangements
2006, 2007 & 2008 Averaged



Have you been homeless more than once in the past year?
2006, 2007 & 2008 Averaged



Number of Times Homeless in Last 3 Years
2005, 2006, 2007 & 2008 Averaged



Level of Education

