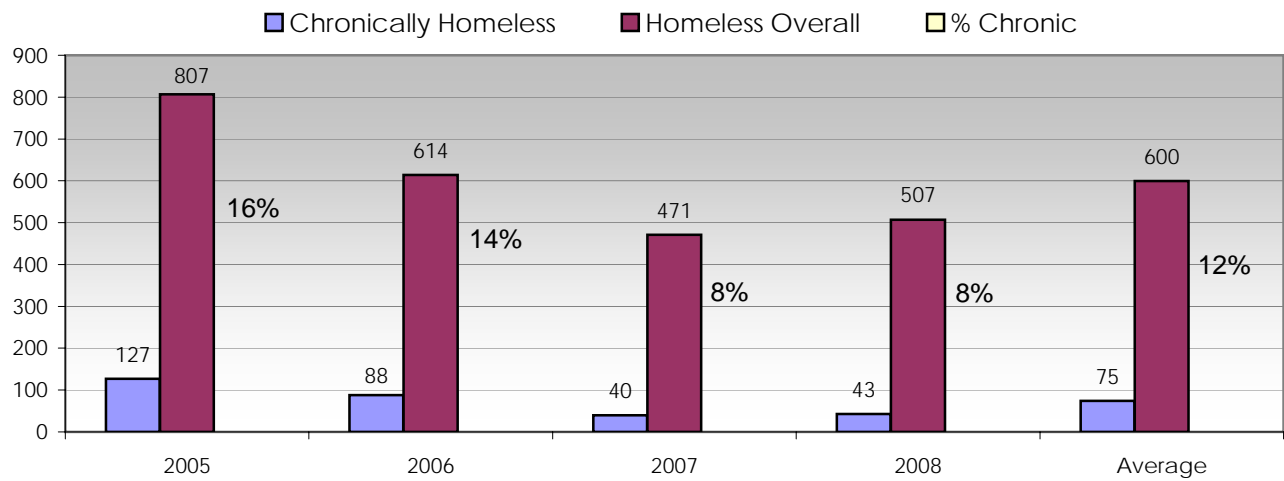
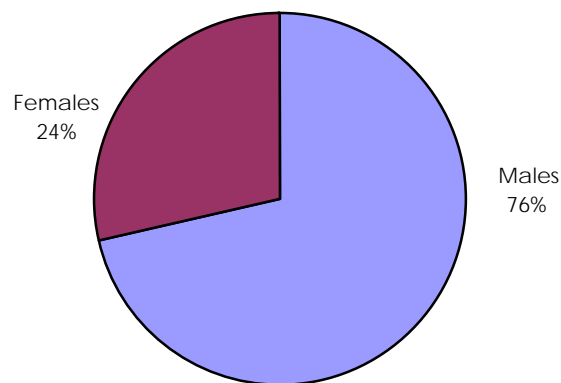


MONTANA HOMELESS SURVEY DATA
CHRONICALLY HOMELESS

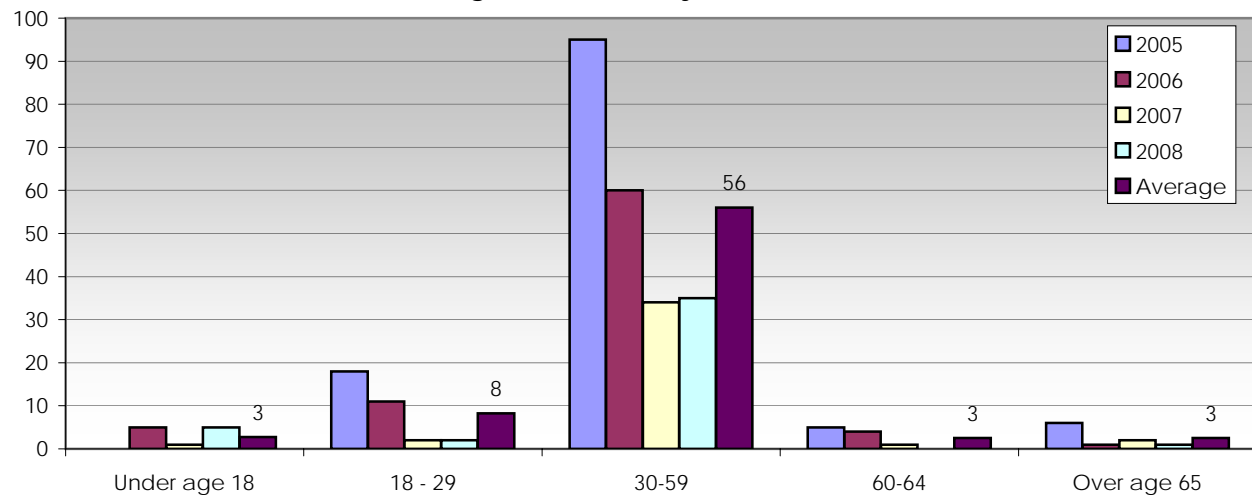
Chronically Homeless Population Compared to Overall



Chronically Homeless by Gender
Averaged from 2005, 2006, 2007 & 2008

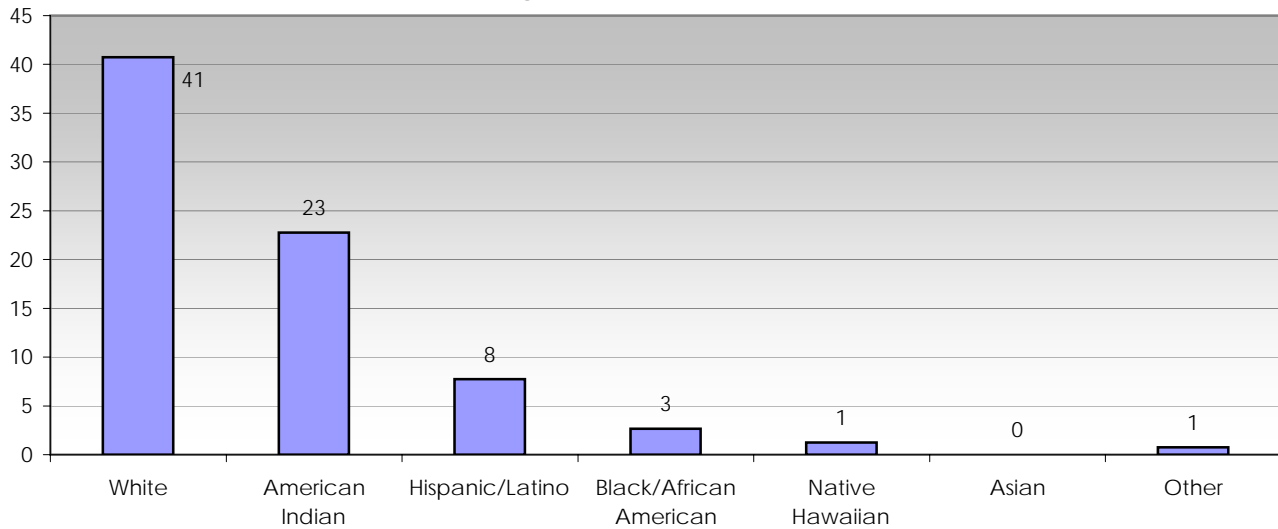


Ages of Chronically Homeless



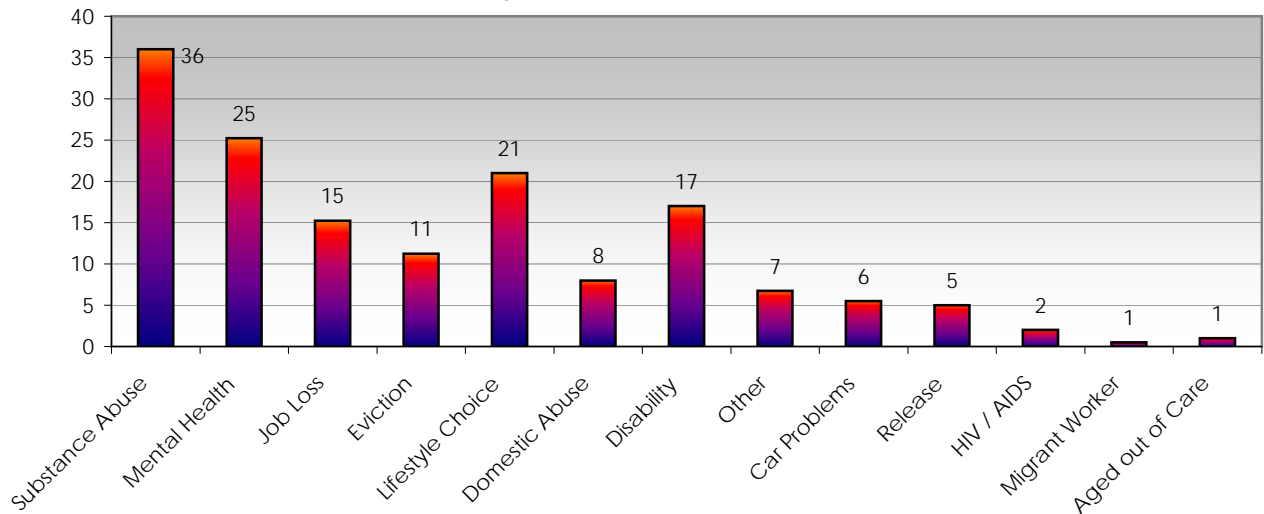
Race / Ethnicity of Chronically Homeless

Averaged from 2005, 2006, 2007 & 2008



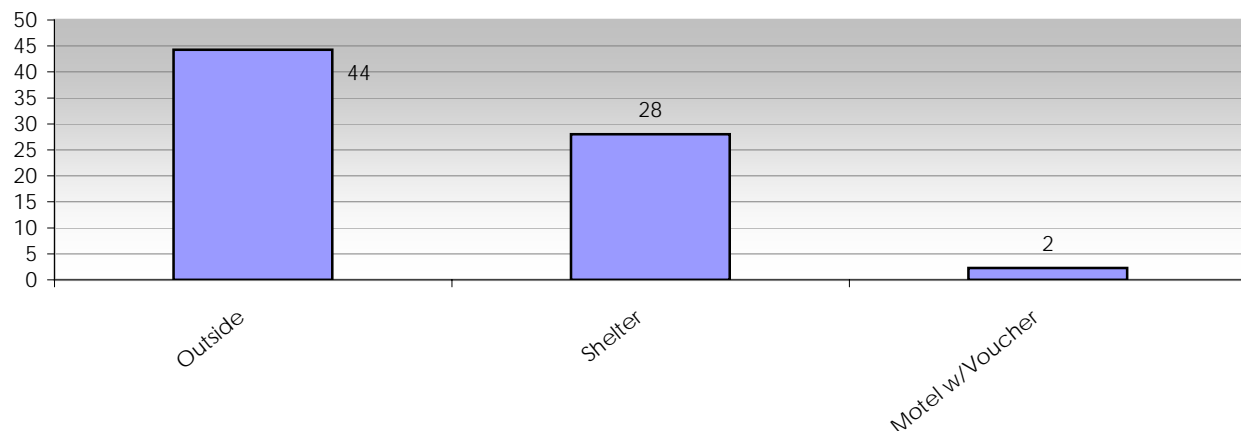
Causes of Chronic Homelessness in Billings

Averaged from 2005, 2006, 2007 & 2008

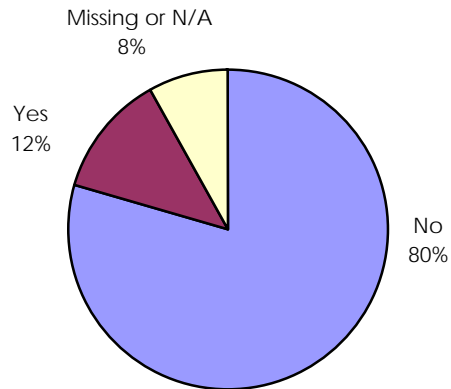


Chronically Homeless Location Slept on Night of Point-In-Time Survey in Billings

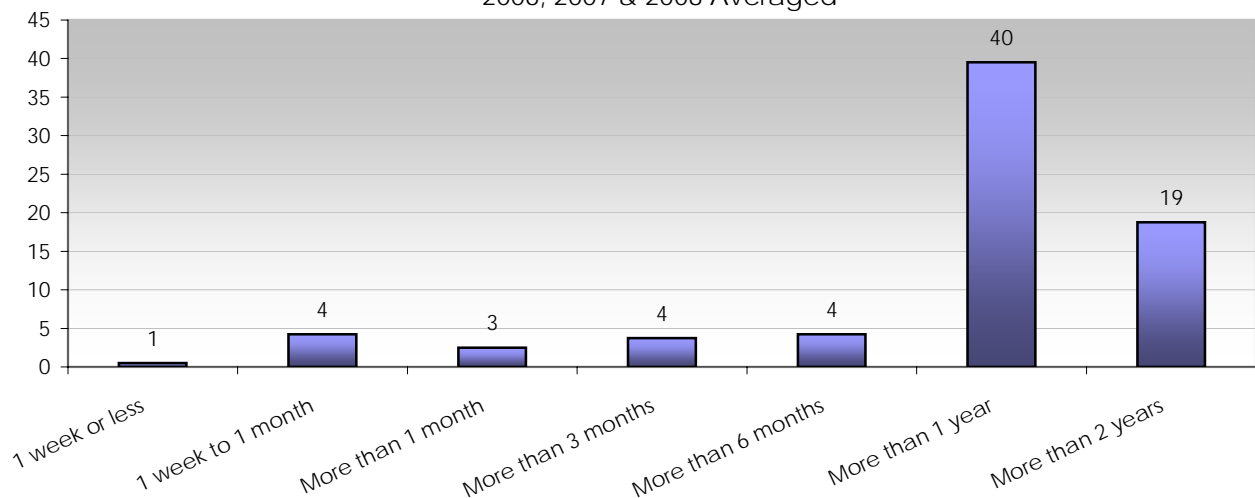
Averaged from 2005, 2006, 2007 & 2008



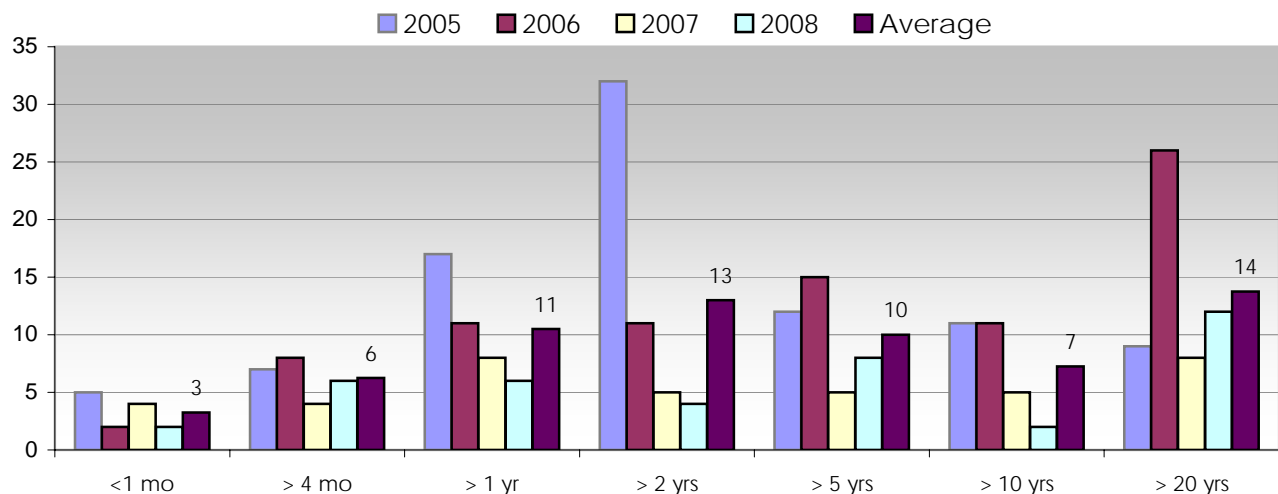
Being Asked to Leave Within One Week Averaged from 2005, 2006, 2007 & 2008



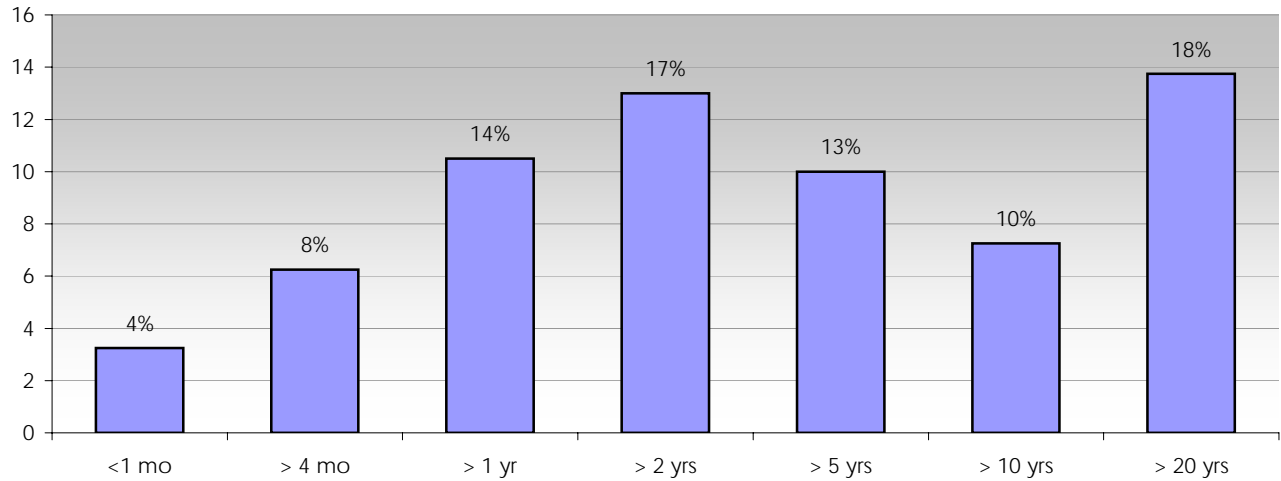
Chronically Homeless Length of Time Homeless 2006, 2007 & 2008 Averaged



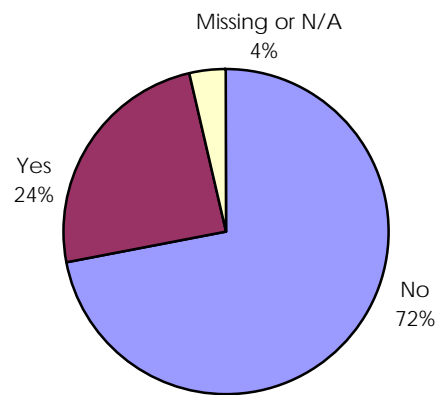
Chronically Homeless Length of Residency in Area



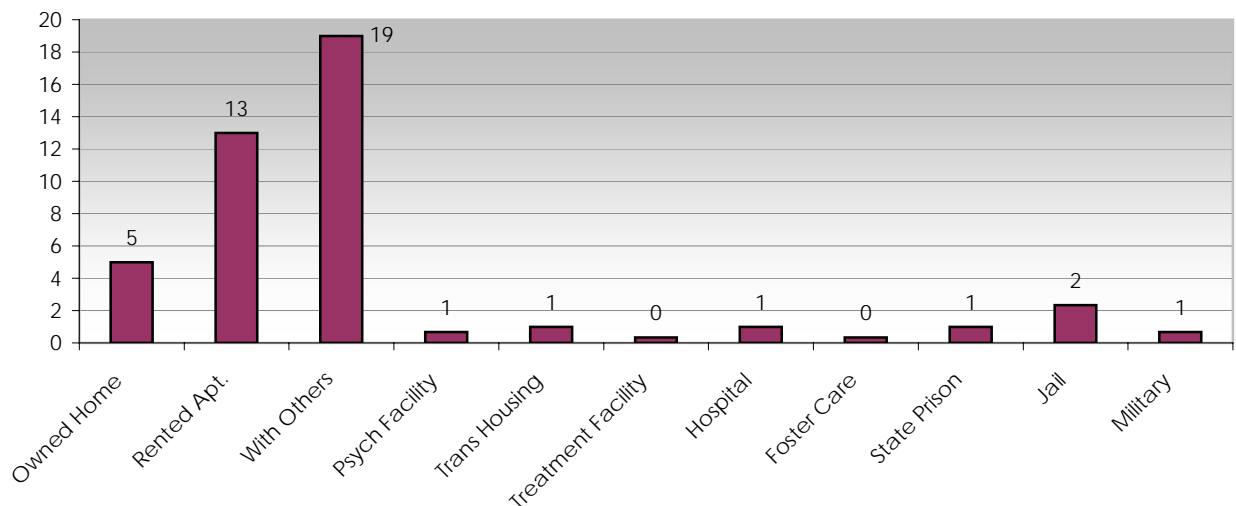
Length of Residency in Billings
Averaged from 2005, 2006, 2007 & 2008



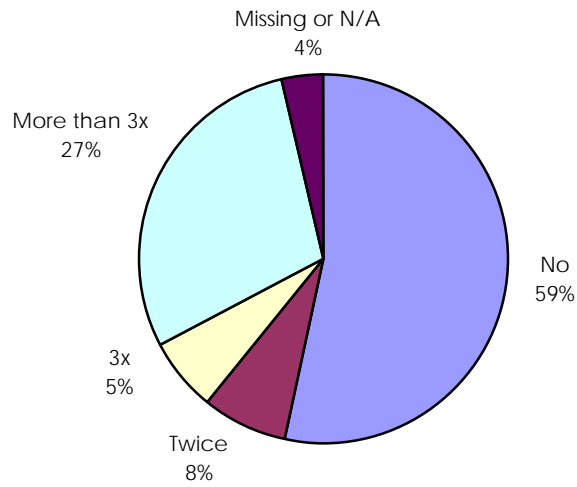
Lifetime Resident of Billings
Averaged from 2005, 2006, 2007 & 2008



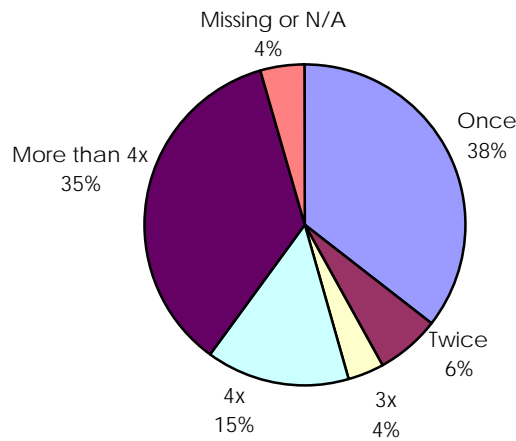
Previous Living Arrangements
2006, 2007 & 2008 Averaged



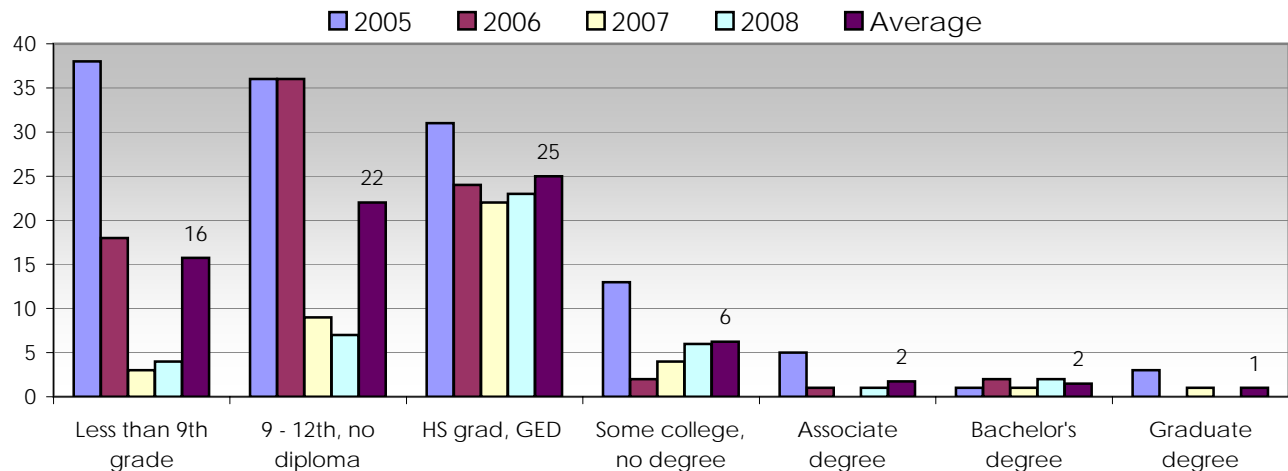
Have you been homeless more than once in the past year?
2006, 2007 & 2008 Averaged

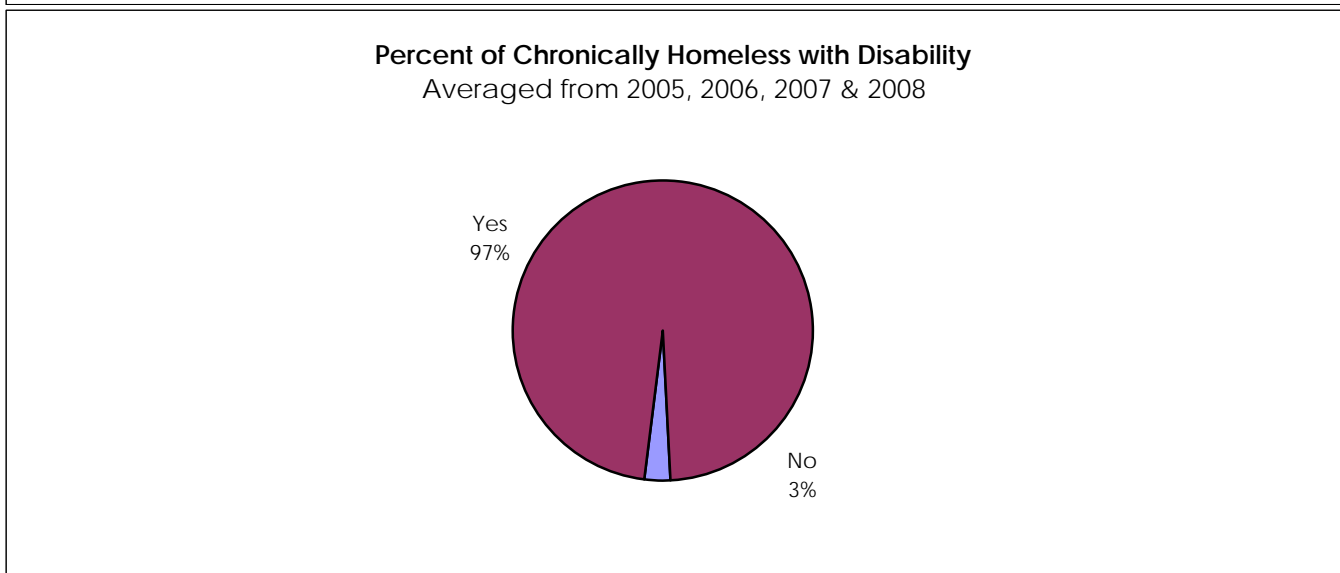
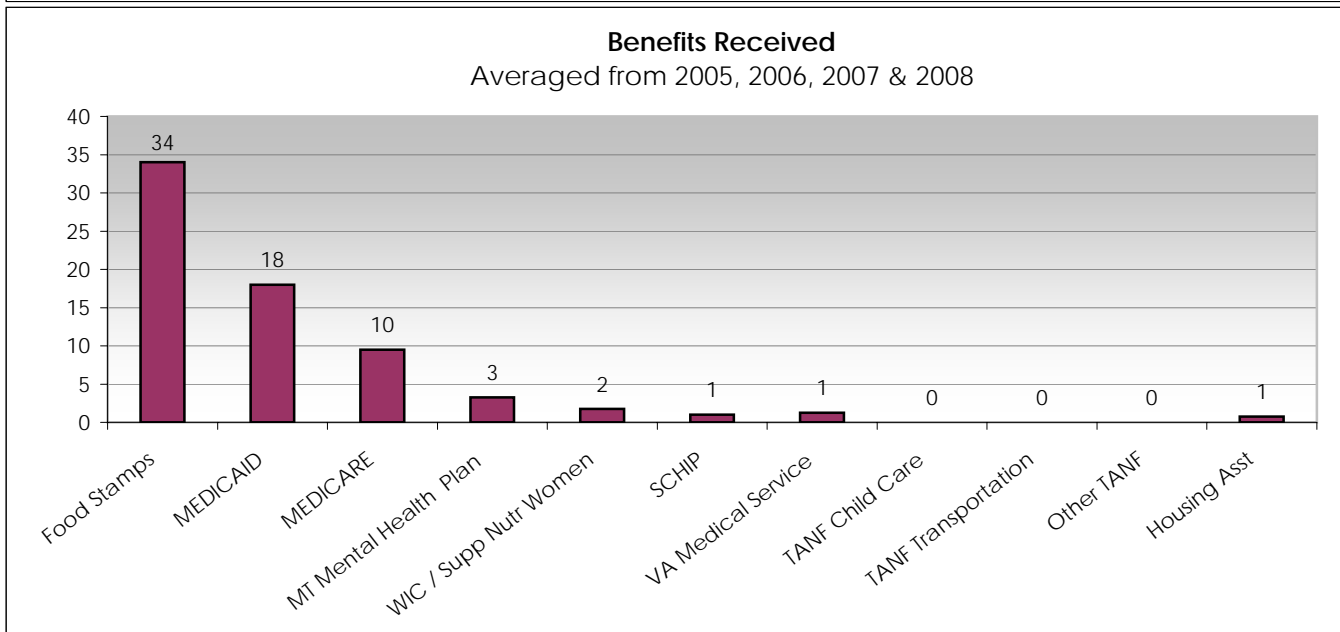
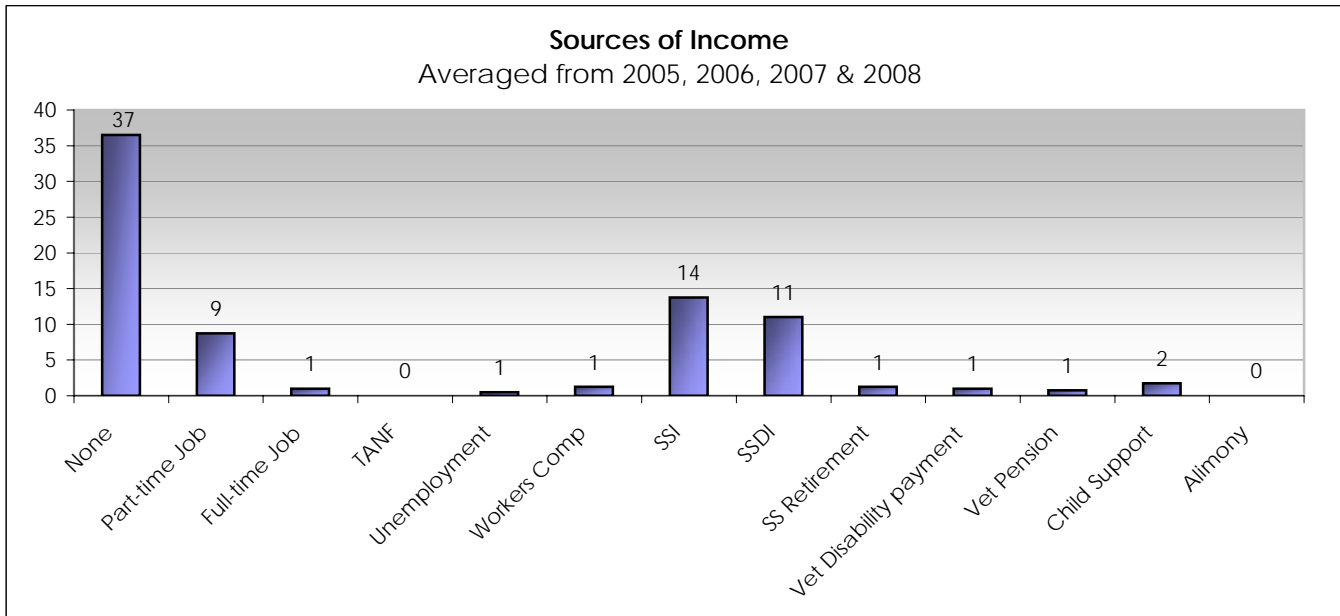


Number of Times Homeless in Last 3 Years
Averaged from 2005, 2006, 2007 & 2008



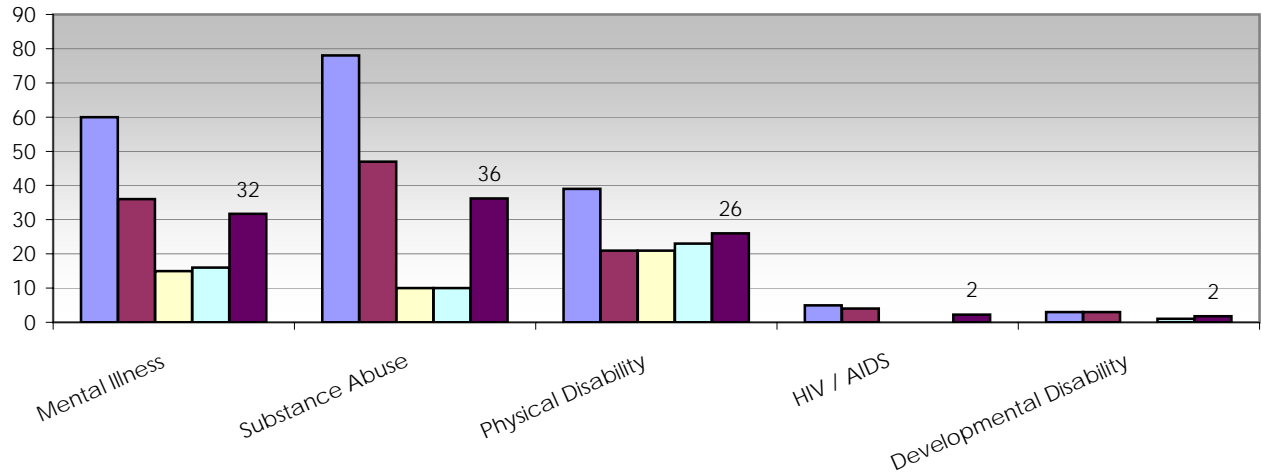
Level of Education





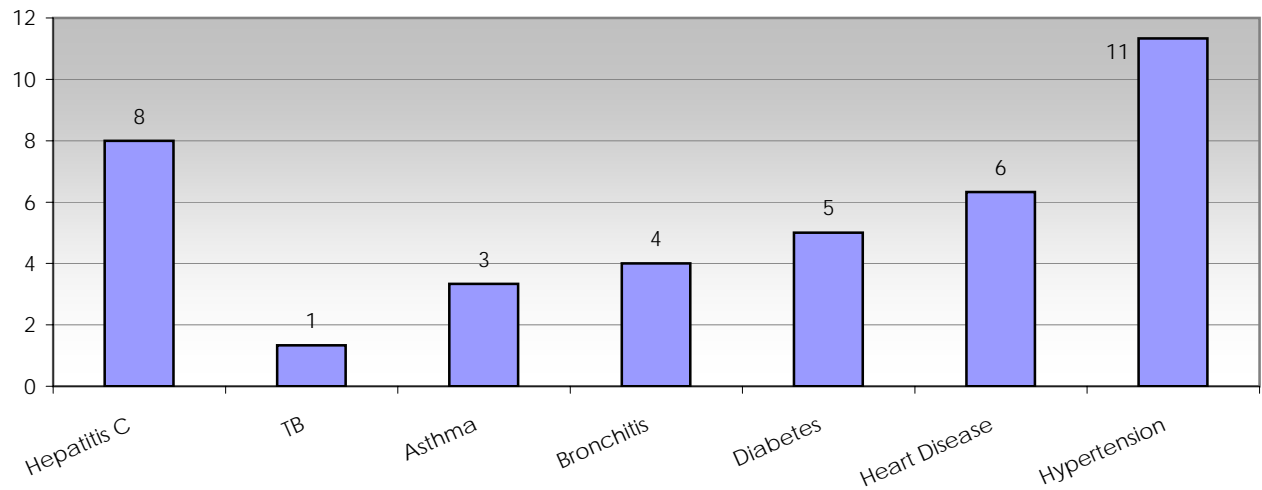
Chronically Homeless - Types of Disabilities

■ 2005 ■ 2006 ■ 2007 ■ 2008 ■ Average



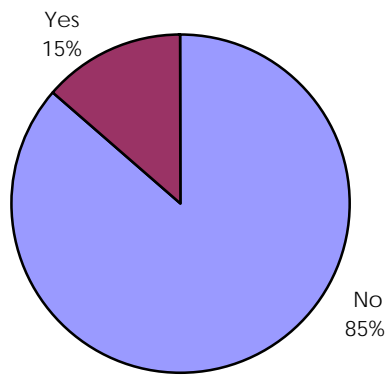
Chronically Homeless - Types of Disabilities

2006, 2007 & 2008 Averaged



Chronically Homeless with Military Service

Averaged from 2005, 2006, 2007 & 2008



Chronically Homeless - War Era

2006, 2007 & 2008 Averaged

