

## Billings City Administrator Weekly Report

August 2, 2024

1. **Semi-Annual Reports** – Please see the attached semi-annual reports for Public Works, PRPL and Downtown Billings Association.
2. **Skyway Drive Planning Effort** - Staff, BSED and councilmember Owen discussed the scope of work for land use, utility and economic development along the corridor. In addition to the planning process to including property owners it will be important for the city and county to work together to maximize the economic opportunities for quality development to recoup the public's investment into the infrastructure.
3. **Montana Rescue Mission** – yesterday hundreds of community members attended MRM's New Shelter Sneak Peek event. We saw respite, family, men's, women's and an apartment. The facilities and services are invaluable to serving the community.
4. **Land Use & Permitting Customer Service** – Planning, Engineering, the Fire Marshall and the Building division met to strategize how best to measure and improve customer service in the development review areas. BSED has agreed to facilitate the community stakeholder discussions that will be held early this fall.
5. **Northern Lights Family Justice Center** – NLFJC held its soft opening Wednesday. This is the culmination of many years of work and will have a positive impact on helping and ultimately reducing family violence in our community.
6. **Fireworks** – Administration, PD and FD met yesterday and discussed possible recommended changes to our fireworks regulations. The goals are to improve compliance and safety as complaints about fireworks seem to be growing significantly. We are researching the impacts of allowing the use of fireworks during a multiday period around the fourth of July and for several hours on New Years Eve with strong enforcement outside of the allowed times and location windows. Council – please let me know if you are open to changes to our regulations.
7. **Aviation News** – The FAA announced Friday, July 26<sup>th</sup> that BIL received the following grant:
  - MT Billings Logan International (BIL) Update Airport Master Plan: \$43,429The grant is a portion of the funding for the ongoing BIL Airport Master Plan (AMP) Update. The last AMP Update for BIL was completed in 2012. An AMP Update is a 18–24-month process to determine an airport's infrastructure needs for the next 20 years. Morrison-Maierle is under contract to complete the current update.

The preliminary CY 2023 FAA Airport Rankings are out and BIL jumped to 143 (out of 548 airports nationwide) for passenger enplanements and 55 (out of 150 air cargo airports)!

This is due to the hard work and professionalism of our airport team and our outstanding community partnerships. (See attached)

- 8. Annual Gravel Streets and Non-Maintainable Street Update** - As an update to the discussion at the June 17, 2024 Council work session, staff reviewed and prioritized the lists of remaining streets to be improved using criteria consisting of street condition, traffic volume, whether the street serves as a through street versus dead-end, annual maintenance cost, need for water or sewer main replacement, consideration of Safe Routes to School, and resident complaints. Using those criteria, staff is pursuing the following streets over the next two years (2025-2026):

#### **Non-Maintainable Streets (Street Reconstruction)**

- Complete remaining area of 9<sup>th</sup> Avenue South
  - Justification: Through street, poor condition, no off-site storm drain required, no property owner assessments, continuation of FY24 project
- 10<sup>th</sup> Avenue South (South 30<sup>th</sup> Street to South 28<sup>th</sup> Street)
  - Justification: Through street, poor condition, no off-site storm drain required, limited property owner assessments, continuation of FY24 project
- South 12<sup>th</sup> Street West (3 sections from Central Avenue to Kalmar Drive)
  - Justification: Through street connecting several blocks, Poor street condition, drainage challenges, and some sewer rehabilitation required (spot repairs)---sewer rehabilitation to be performed at the same time as the street reconstruction.

A little over one-half of the remaining non-maintainable streets are dead end streets or cul-de-sacs, such that they have been prioritized lower than the through streets.

#### **Gravel Streets**

- Ranchette Road (from Rolling Hills to the north)
  - Working from recent neighborhood interest survey, and updating costs to work with property owners
- Lariat Trail (from Rolling Hills Drive to the north)
  - Revisit property owner interest since Ranchette Road is adjacent
- 21<sup>st</sup> Street West from Colton Avenue to Solomon Drive
  - Prioritized due to use in connecting neighborhoods south of Colton Ave and heavy use by St. Francis school drop-off traffic
- Upcoming Interest Surveys:
  - Mullowney Lane (Vicinity of Parkway Lane)
  - Treasure Drive (from Vickery Drive to Poly Drive)
    - Complete paving improvements and remaining curb on west side of street
    - Through street
  - Morey Street (Near the MDT facility and the Muzzleloader café)
    - Recent waivers for improvements
    -

With the gravel streets, flexibility in completing the paving and sidewalks will be priority and staff will utilize interest surveys sent to residents to validate interest in these SID projects.

## 2024 Gravel Street Project Completions

Arvin Lane and Hancock Drive gravel streets were paved and completed during June 2024. The water main was replaced in Arvin Lane.

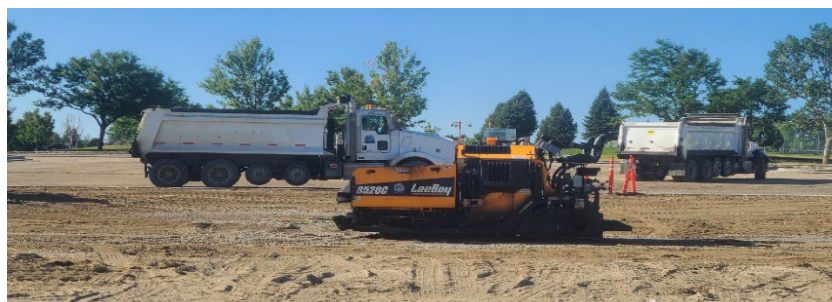
SBURA Gravel Streets, Phase II is a South Billings Urban Renewal Association project that improved existing gravel and non-maintainable streets within the SBURA District along Ryan Avenue and Morgan Avenue. Improvements consisted of constructing new City-standard paved streets including new sidewalks, curb and gutter, drive approaches, alley approaches, accessibility ramps, and storm drain improvements. Additionally, this project replaced the aging and deteriorating water main in both Ryan Avenue and Morgan Avenue from Hallowell Lane to Jackson Street. Stephens Lane along Optimist Park was paved and completed with lighting and parking.

9. **MET News** – The phenomenal growth in MET Transit ridership continues with 72% more riders in July 2024 (40,405 riders) than in July 2023. (See attached)
10. **Cottonwood Master Plan** – As per the request by Council to add to the Cottonwood Master Plan; the plan now includes direct quotations from the property dedication agreement related to the park funding provided by Mayor Cole, plus the complete agreement in the appendix.

Below is the link to download the updated Cottonwood Park master plan document. See pages 64-66 for the updates.

<https://www.dropbox.com/scl/fi/stdvu1q5clwlb3934vggx/Cottonwood-Park-Documentation-072324-reduced.pdf?rlkey=6mzlzt5a4rjyuep4bxkni4ts3&st=8u7evea5&dl=0>

11. **Parks and Recreation News** – Paving of the parking lot at Castlerock Park is underway. The lot should be ready for Park users later this month. Landscaping and lights are next.





This is a large 6-inch line that failed in Harvest Park. The systems in Harvest and Olympic Parks were installed in the 1980's and has begun to fail. Staff are currently repairing 10 mainline breaks between the two parks.



There was a large mainline break at Dehler Park. The break is buried 15 feet deep and is under the concrete walkway making the repair extremely difficult. With the help of Public Works vac-truck staff were able to locate the leak and provide a temporary service until a repair can be made. Staff had the water back flowing in under 48 hours.



## **12. Talent Attraction** - BSED has hired DCI Research to conduct a study around talent attraction.

Several community members had an opportunity to see the preliminary results. During Monday's public comment period, Marcell Bruski will invite the council to attend a future presentation.

## **13. Next Week's Meetings/Task Forces**

- a. North Park Task Force, Wednesday, August 7<sup>th</sup> 7:00 PM, North Park Community Center.

## **14. 2024 Council Meeting Schedule** – Please see the attached Council Meeting schedule for upcoming items on the agenda.



## 15. New City Hall Update –



### 5<sup>th</sup> Floor

Power and Data to systems furniture.  
Work on misc door hardware.  
Work on podium casters in council chambers.  
Punch list completion work.

### 4<sup>th</sup> Floor

Continue to install system furniture.  
Power and Data to system furniture.  
Punch list completion work.



### 2<sup>nd</sup> Floor

Install stainless cap at glass handrail on gallery stairs.  
Install doors and hardware.  
Install backing for base at judge benches.  
Punch list completion work.

### **1<sup>st</sup> Floor**

Above ceiling electrical circuit box make up.  
Grout floor tile in main restroom group.  
Install sink casework in main restroom group.



Demo concrete sidewalk and curb on east side of building.

### **Parking Garage**

Welding and install exhaust piping for generator.



## 16. City Communications –

Staying afloat: Fleet Services repairs PW Dredge Boat

<https://www.facebook.com/billingsmtpublicworks/posts/pfbid0i3xrvyazQTYMHfkzwYkqdt2xP3Kib3MqUcTQKpYfbfojW3GpiZpX1KHvmdJKHKX9l>

Seeing Stripes: PW spruces up street markings

<https://www.facebook.com/billingsmtpublicworks/posts/pfbid02CA2vfzm5FVMV3Lp45XCsgxgwekcybTze8oW3JiW4e8yKnoqsVJ6smtDRqT51oqil>

BPD Weekly Report

<https://www.facebook.com/photo?fbid=887856353376144&set=a.226302889531497>

Atonement Lutheran to host National Night Out w/ Billings PD & Fire on Aug. 6

<https://www.facebook.com/photo?fbid=518119864113123&set=a.212894147969031>

Soiled Undies: BPL shares results of summer soil experiment

<https://www.facebook.com/BillingsPublicLibrary/posts/pfbid02Y17FS7feGHdJk8BAQScgnkXwERxDVBuFwEjPo1o3cSP5DSrZfgYvDAST4jTG2HGdl>

PCSD on the move: Departments begin transition for new City Hall

<https://www.billingsmt.gov/3217/Moving-Updates>

Parks and Rec rebuilds horseshoe pits thanks to donation from Lowe's

<https://www.facebook.com/BillingsParksandRecreation/posts/pfbid0mMJP3HXEkVMVUS5DDHj8FLaKEZF4hQQckuypm4ZHqepUh7Bri5QVqdFtx3enXCLJl>

Billings Parks and Rec to host Parade of Gardens

<https://www.facebook.com/BillingsParksandRecreation/posts/pfbid02WmuPHDDgon8NP1wfX5N14H4KyhlLfSQEtCajZ9HNNfB9k8L3A8V8oiasGqXib2vwl>

### **BPD**

*Billings Public Schools and Police Department hold trainings at West High for school safety*

<https://www.ktvq.com/news/local-news/billings-public-schools-and-police-department-hold-trainings-at-west-high-for-school-safety>

*Photos: Police hold active shooter training at West High*

[https://billingsgazette.com/news/local/training/article\\_ba666c9c-4f59-11ef-8163-f768c296dbe9.html](https://billingsgazette.com/news/local/training/article_ba666c9c-4f59-11ef-8163-f768c296dbe9.html)

*Billings man faces felony charges following standoff on Broadwater Avenue*

<https://www.ktvq.com/news/crime-watch/billings-police-engaged-in-standoff-friday-morning>

### **BFD**

*Fourth annual Guns and Hoses makes donation to Love and Sonshine*

[https://www.kulr8.com/montana/fourth-annual-guns-and-hoses-makes-donation-to-love-and-sonshine/article\\_f5d5765e-4c9f-11ef-8ddc-97a316233be3.html](https://www.kulr8.com/montana/fourth-annual-guns-and-hoses-makes-donation-to-love-and-sonshine/article_f5d5765e-4c9f-11ef-8ddc-97a316233be3.html)

### **PW**

*Photo: Zimmerman Trail closes for annual maintenance*

[https://billingsgazette.com/news/local/zimmerman-work/article\\_4ab16cd4-4e97-11ef-b29a-279cd98f30b9.html](https://billingsgazette.com/news/local/zimmerman-work/article_4ab16cd4-4e97-11ef-b29a-279cd98f30b9.html)

*Necessary work: Zimmerman Trail receives its 2024 'spa day' in Billings*

<https://www.ktvq.com/news/local-news/necessary-work-zimmerman-trail-receives-its-2024-spa-day-in-billings>

**In other news...**

*Montana Rescue Mission shows off its new shelter in downtown Billings*

[https://billingsgazette.com/news/local/montana-rescue-mission-to-open-new-billings-shelter/article\\_66dde448-5020-11ef-b8ce-6b50f1d24d36.html](https://billingsgazette.com/news/local/montana-rescue-mission-to-open-new-billings-shelter/article_66dde448-5020-11ef-b8ce-6b50f1d24d36.html)

*With construction set to start, St. Vincent Regional Hospital puts out call for contractors*

[https://billingsgazette.com/news/local/business/st-vincent-regional-hospital-layton-construction-local-contractors-labor-force/article\\_693814ac-5039-11ef-a982-e3fb57892173.html](https://billingsgazette.com/news/local/business/st-vincent-regional-hospital-layton-construction-local-contractors-labor-force/article_693814ac-5039-11ef-a982-e3fb57892173.html)

*Billings high schools to crack down on phone use in class next year*

[https://billingsgazette.com/news/local/education/billings-public-schools-pandemic-learning-loss-phone-policy-school-board/article\\_124ce8dc-4e01-11ef-a4e2-abad0b438ef3.html](https://billingsgazette.com/news/local/education/billings-public-schools-pandemic-learning-loss-phone-policy-school-board/article_124ce8dc-4e01-11ef-a4e2-abad0b438ef3.html)

*Walk through time: Artist paints interactive mural highlighting Billings history on Skyline Trail*

<https://www.ktvq.com/news/positively-montana/walk-through-time-artist-paints-interactive-mural-highlighting-billings-history-on-skyline-trail>





# Billings

## PUBLIC WORKS

Excellence  
Innovation  
Integrity

Department Report 8.1.2024



# Contents

**West End Water Treatment Plant Foundation Work**



- 3 Director's Message
- 4 Tackling Stormwater System
- 9 Ensuring Stormwater Quality
- 11 Westend Water Treatment Plant  
Progress Update
- 12 Pipebursting in Action



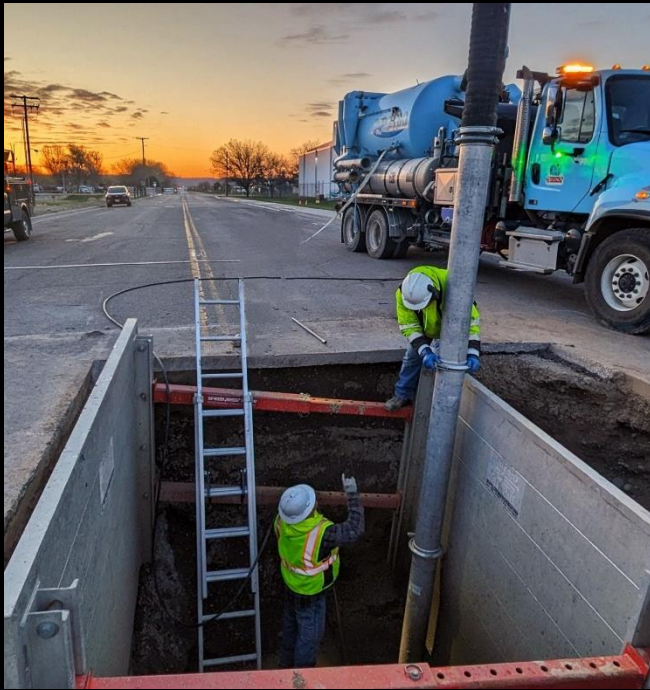
**Public Works Open House 2024**



**Shiloh Conservation Area Guided Tour**

- 13 CDL Training Success
- 15 Summer TLC - Paint the Town Safe
- 17 Composting Taking Roots
- 19 Construction Happenings
- 22 Public Works in the Community

# a letter from the director



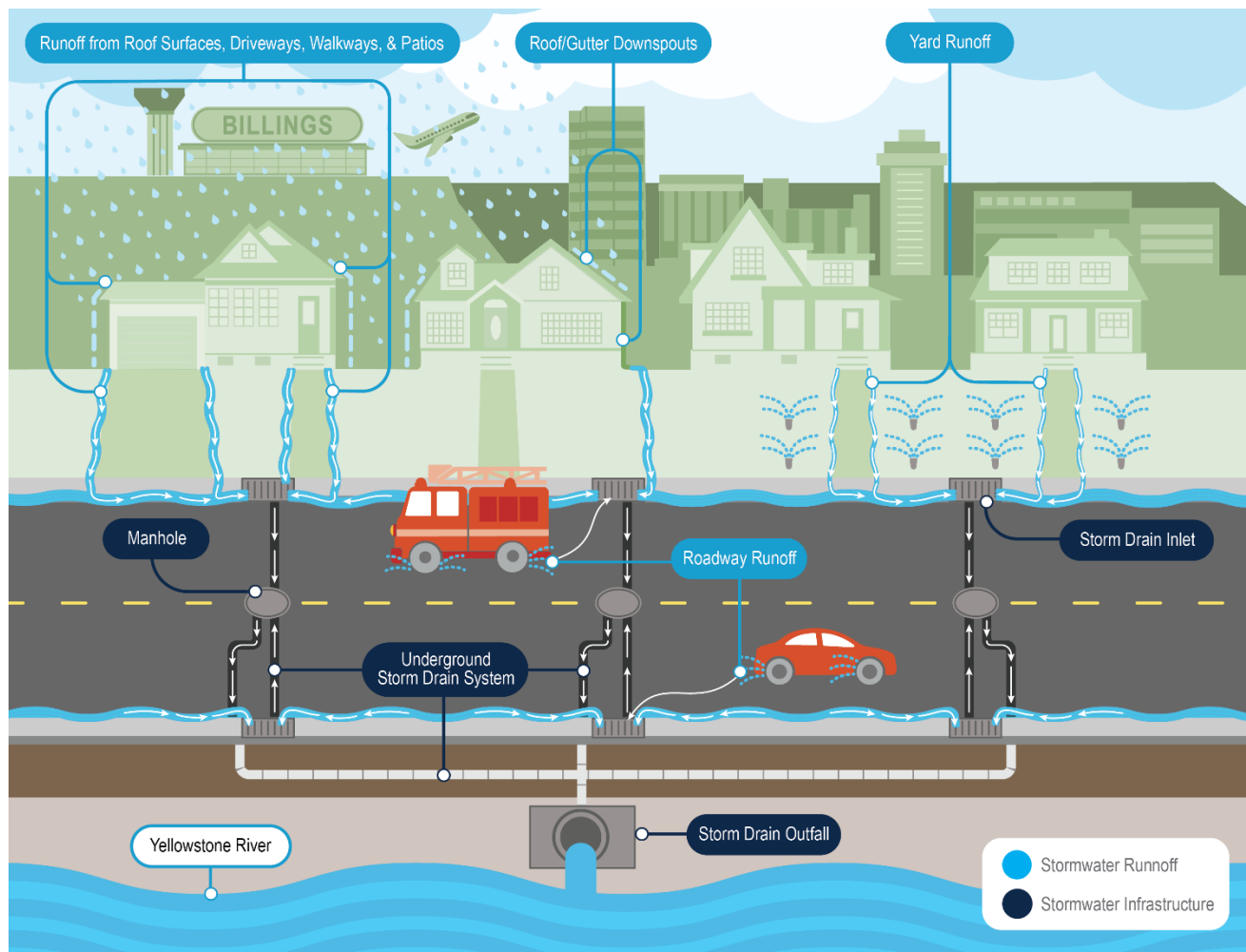
In looking back at the last 6 months, it seems like it's been relatively quiet on the PW front. We didn't have any huge winter snowstorms, no damaging spring rains, our water and sewer plants are running without pause, and construction is moving along as expected. That being said, it doesn't feel like it's been quiet and when you read this newsletter you will see why not. Even in the absence of the big events, there is much to do every day just to keep our infrastructure in good shape and perform normal operations. As always, the ability to provide these essential services is dependent on our exceptional staff and the unwavering support of the City Council and administration.

*Debi Meling*

Public Works Director

# Tackling Stormwater System with Comprehensive Master Plan

This storm season, we were excited to introduce a series of much needed upgrades to the City's Stormwater Program that are set to make a splash! These improvements aim to **improve system resiliency, reduce long term infrastructure costs, better manage risks during heavy rain events, safeguard against property damage caused by flooding, and improve stormwater quality going into the Yellowstone River.**



## Why is this so important for our community?

### 1. Safeguard against property damage by preventing flooding.

When it rains it drains. When drainage is inadequate, flooding occurs. It's that simple. A portion of our stormwater system is over 100 years old. Due to insufficient funding, we currently face over \$70 million in deferred maintenance. This is why we experience flooding and property damage during heavy rain events.



## Flooding during heavy rain events



## What we don't see that causes the flooding



## 2. Avoid costly emergency repairs.

We all know that urgency drives up costs. Reactive maintenance is typically 30%-40% more expensive than proactive maintenance. For instance, the major rain event in June of 2023 led to the Hogan Slough Culvert at Gable Road to collapse (as shown in pictures below). The rushed custom order of the 12-foot x 8-foot concrete box culvert took over six months to arrive before the repair could even begin. This caused prolonged disturbance for our residents and local businesses. Not to mention the steep price tag on rushed parts and labor costs that could have been avoided with sufficient funding for proactive maintenance.



### 3. Improve stormwater quality going into the Yellowstone River.

A well-functioning stormwater system does not stop at proactively maintained stormwater pipes, ponds, culverts, and inlets, etc. The City is also incorporating wetlands and bioretention systems alike when conditions are appropriate which will reduce sediment, nutrients, pathogens, and contaminants in stormwater. These features enhance water quality by allowing sediments to settle, nutrients to be absorbed by plants, and contaminants to be filtered out. By improving the stormwater quality, we protect the health of the Yellowstone River and ensure cleaner water for the entire community.

### How will this affect our residents and your utility bills?

#### 1. Stormwater fee moved from property tax statements to monthly utility bills.

Effective July 1, 2024, the stormwater utility fee moved from property tax statements to your monthly utility bill. This bill will now include fees for water, wastewater, solid waste, and stormwater services.

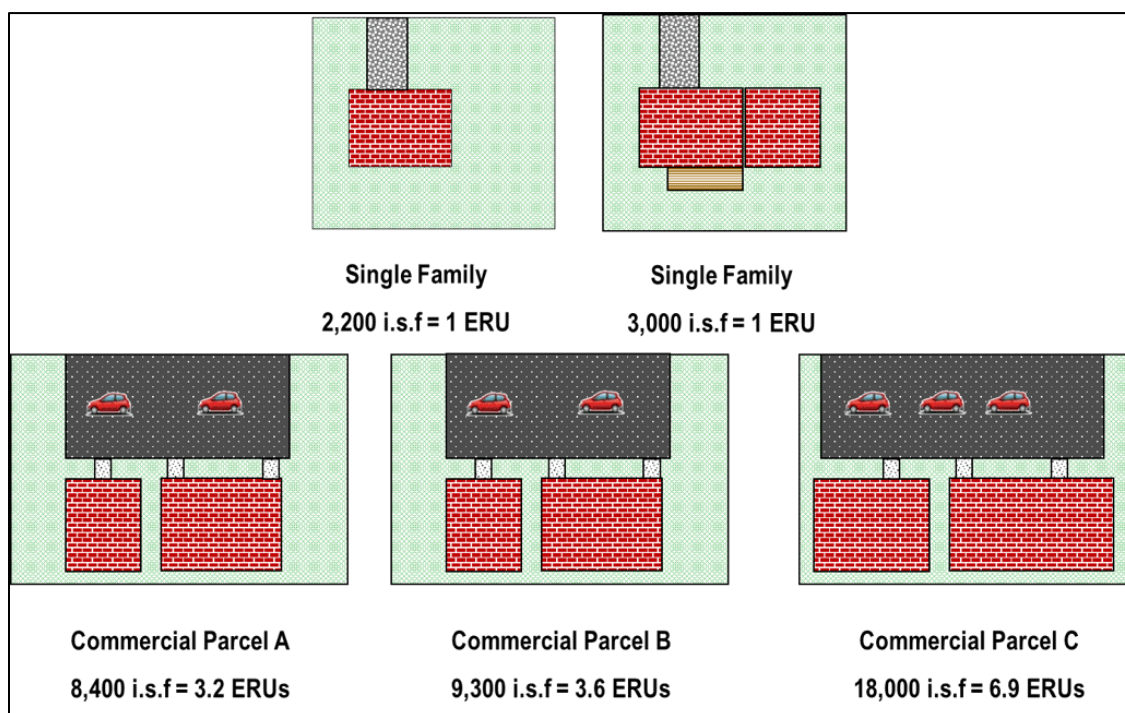
#### Stormwater Fee Relocation

Move from an assessment on the annual property tax statement to a charge on the monthly utility bill



#### 2. New Assessment Method

Stormwater fees will now be based on the average impervious surface of single-family residential properties, defined as an Equivalent Residential Unit (ERU) with a value of 1.0. Each single-family residential property will be assigned 1.0 ERUs.





### 3. Residential Rate

The value of an ERU is \$6.68 per month. Thus, each single-family residential property is charged \$6.68 per month for stormwater services starting July 1, 2024.

### 4. Commercial Rate

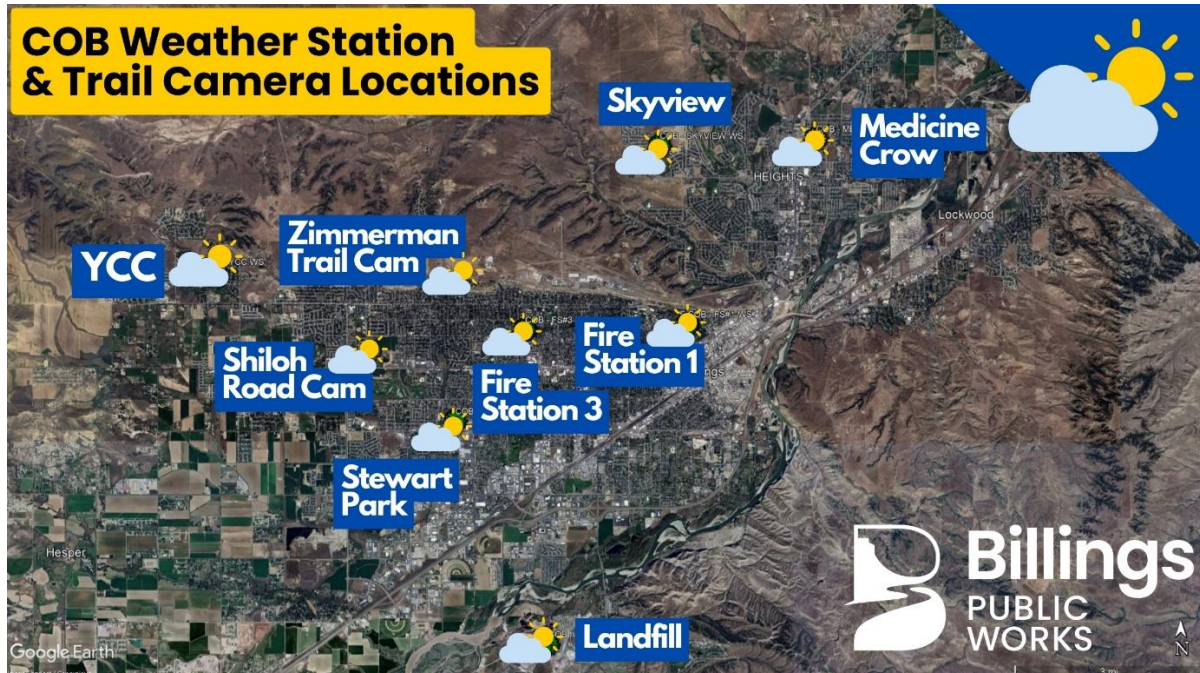
Commercial properties are assessed based on their impervious surface area relative to single-family residential properties. For example, a commercial property with five times the impervious surface will be assigned 5.0 ERUs and charged accordingly.



### 5. Purpose

This adjustment is part of our ongoing efforts to provide dedicated funding for maintaining and improving our stormwater infrastructure, ensuring better flood prevention and water quality for our community.

## Stormwater Program Changes Q&A



These changes aim to establish a program tailored to the needs of Billings, following a multi-year, intensive data collection, and research process. We appreciate your support during this transition as we build resilience, protect our community, and ensure sustainable infrastructure

for generations to come. We are happy to answer any questions in addition to the **Q&As** below.

**Q1. How much is my stormwater rate, and will it go up?**

The average single-family residential property is charged \$6.68 per month as of July 1, 2024. Rate increases are voted on by City Council every year. City Council currently supports a phased increase over time to enhance the City's stormwater system.

**Q2. How would this change affect renters?**

Landlords currently recover all property taxes and assessments in the rent. If a tenant pays the utility bill, the tenant would pay the \$6.68/month fee, but the rent should theoretically decrease. Many landlords pay the utility bills so it would have no effect.

**Q3. How would it affect disabled veterans and low-income homeowners who qualify for the Property Tax Assistance Program (PTAP)?**

It does not affect them at all. The storm fee is an assessment rather than a tax. Further the PTAP essentially reduces taxable value of a home, and the storm assessment is calculated using zoning and square footage rather than taxable value.

**Q4. How would the change impact deductions on income taxes?**

This has no impact on income taxes. If a property owner believes that they can deduct the storm fee as a property tax, they can still deduct it regardless of where the City bills it.

**Q5. How would the change affect the Montana Elderly-Homeowner/Renter Credit?**

Special assessments included on the property tax statement are allowed to be used in the calculation of the credit. The amount of the credit is based on household income, rent and property tax so any effect on elderly homeowners is variable and would affect very few property owners. There is no effect on elderly renters.

**Q6. How would this change affect not-for-profit entities?**

It does not impact not-for-profits. These entities pay the storm fee now. Again, it is an assessment, not a tax, and non-profits are only exempt from taxes.



Find more details on the [PPT](#) from the City of Billings Stormwater Program Public Meeting 5/28/2024 or [watch the meeting recording](#)



## Ensuring Stormwater Quality – A Commitment to Environmental Health

Stormwater quality is crucial for the health of our beloved Yellowstone River because stormwater flows directly into the river without treatment. Following the Department of Environmental Quality (DEQ) requirements, our environmental affairs team actively monitors and reports on stormwater quality through a meticulous sampling process.



For several years the team has been actively collecting and analyzing stormwater samples during significant rain events and dry weather conditions to track and record stormwater quality at several sites within the City's MS4 area (Municipal Separate Storm Sewer System).

Once collected, the samples are analyzed by our inhouse and private laboratories. This bi-annual sampling and subsequent reporting are crucial for several reasons.







### **Compliance Monitoring**

Regular sampling ensures that our stormwater discharges meet permit requirements and water quality standards which helps us avoid regulatory issues and fines.

### **Pollutant Detection**

By tracking various pollutants such as sediments, chemicals, and other contaminants, we can better understand the pollutants affecting our local water ways.

### **Effectiveness Evaluation**

These efforts allow us to assess the performance of stormwater best management practices implemented to reduce pollutant levels.

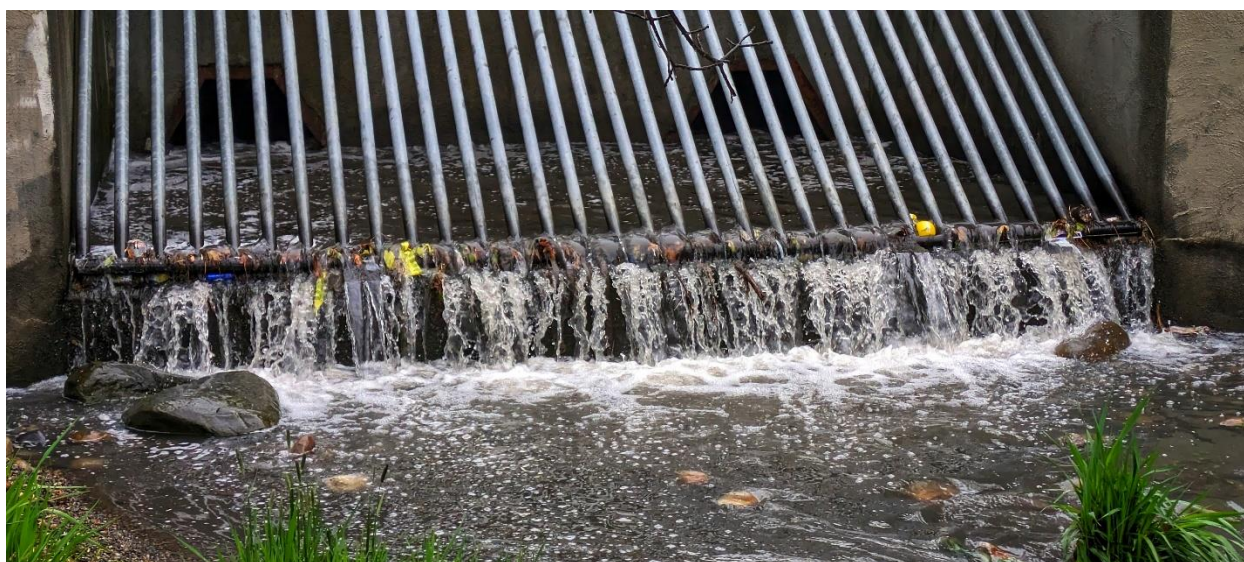
### **Data Collection and Analysis**

Reliable and consistent stormwater monitoring data supports informed decision-making and helps identify trends over time.

### **Public Health and Environmental Protection**

Regular monitoring safeguards public health and protects local waterways.

Through these focused efforts, the City of Billings is committed to maintaining compliance, protecting our water resources, and ensuring the effectiveness of our stormwater management programs.





## Concrete Milestone: A Solid Foundation for the West End Water Plant

The final deep concrete pour took place in July!

We now have a finished foundation for the west end water plant~ Huge shout out to our amazing contractor, Dick Anderson Construction, for sharing this 2-minute time-lapse with us!

Check out 3 months' worth of construction progress condensed into 125 seconds on our channel at [youtu.be/3ndqhgE0Ezg](https://youtu.be/3ndqhgE0Ezg)

Roughly speaking, we are constructing nearly a 2/3 football field size concrete box that is 20 ft deep with numerous baffle walls, weirs and other water control measures.

What's impressive is the amount of concrete that needs to go in which is about 5,020 cubic yards or 19,200,000 pounds in total. For a mental visual aid, just imagine 2,000 adult elephants which we think is certainly a decent number of elephants... So needless to say, we are off to a great start!





## Bursting with Innovation – Pipebursting in Action!

Believe it or not, cutting streets open is not fun for us either and we try to avoid it whenever possible. One way to avoid open cut is an innovative trenchless process called pipebursting. Our Water Distribution and Wastewater Collection team has been using pipebursting for the past 18 years to replace aging and problematic water and sewer mains.



Every year, our dedicated team identifies water and sewer mains around town that need replacing. Based on factors like location, age, and pipe material, a plan is devised to tackle these replacements, either in-house or with a contractor. Performing in-house pipebursting in qualified residential areas costs the city half as much as using a contractor.

Replacing 3000 to 4000 feet of water main and sewer main through pipebursting not only saves millions of dollars for our city, but the trenchless nature of the process also means less disruption to our residents' daily lives. While you might see a lot of construction activities and



experience some inconvenience, please know that these are signs of necessary improvements being made. Not to mention, we do our best to minimize open cuts whenever possible.

Thanks for your patience and support as we work to improve our city's infrastructure during construction season!



## Driving Excellence: Public Works' Innovative CDL Training Program Hits the Ground Running

If you haven't met Austin, you've probably seen him hard at work training with our landscaping team that diligently cares for thousands of trees and plants, manages hundreds of irrigation zones, and maintains over 40 miles of mowing routes around Billings. Amidst his on-the-job training, Austin also just passed his Class A CDL test!



Since the official launch of our internal CDL training program in March, 14 trainees, like Austin, have had the privilege of working with our exceptional trainer, Jake. Whether with theory instructions or on the range & on the road practice, Jake's primary goal is to instill confidence in each trainee, ensuring they believe in their abilities and continue to study and practice to pass the test on their first try. Our training program not only meets but exceeds DOT standards, with a core emphasis on the safety of our team members and citizens.







For Austin, gaining practical experience with the work trucks and equipment he will soon operate and training under a mentor who once stood in his shoes has made a significant impact. Additionally, being able to retain his job and income while training for his CDL has been invaluable for his family.

So far, the program has added value for Solid Waste Collections, Landfill Operations, Street-Traffic Maintenance, and Water Distribution & Wastewater Collection. Jake has also been entrusted with training CDL equipment operators for other city departments, with a couple of colleagues from Parks & Recreation being the pioneers. Comparing to a conventional CDL training program with a price tag of approximately \$5,000 and a time commitment of 3 months with no income, this innovative approach continues to save the city money and resources, boost productivity, and improve morale while attracting and retaining individuals with a strong service mindset.



Congratulations to Austin for passing his Class A CDL! Shoutout to Jake for being the driving force behind the program's success!



## Summer TLC – Crisp Lines & Safe Roads

A little summer TLC goes a long way for improved visibility and overall road safety. That's why road striping is such a priority for us. All roads get restriped every summer, except for newly overlaid or chip-sealed streets where the epoxy paint is holding well, or roads that are going to be worked on soon.

What might be surprising to you is that for the entire Billings area, all crosswalks are done by a dynamic duo and all the rest of the road markings are done by our one and only striping truck plus a mighty crew of three. No doubt that they are hustling all season to paint the town safe.



Our striping truck sprays an average of 300 gallons of paint and 1,800 pounds of beads every day! The double yellow and white skip lines dry in just a minute or two in this hot weather. Crosswalks take a few minutes longer since the paint goes down a bit thicker, but we keep everything coned off until it's all dry and ready for you!





While Matt drives the striping truck, he has to stay laser focused on the camera facing the paint lines, ensuring everything moves at the right speed and direction. Steve steers from the back, operating various switches to start and stop the paint and reflective material at the perfect times. Meanwhile, Clint sets up countless signs and cones to keep everything safe for our operators and give drivers plenty of warning around the work zone.



Here you see Brady spraying our special ammonia-based paint that dries super fast while Mitch is following right behind, spreading glass beads on the wet paint to make those lines reflective. Those high-traffic school crosswalks are at the top of our list while school's out. As you can imagine, with fleeting Montana summers and a long list of crosswalks, our team has to be up for the challenge!

If you see our crews out striping, please slow down around our workers and equipment and avoid driving over coned off, fresh painted lines if possible.

Looking this sharp takes a lot of care and attention.





## Transforming Waste into Resources – Billings Compost Facility Takes Root

This July, Billings is taking a major step towards sustainability with the completion of a new compost facility at the Billings Regional Landfill. Previously, green waste like brush and grass clippings were shredded into mulch for limited landfill usage. This exciting new addition is set to transform yard waste, cardboard, and other natural materials into ready to use compost for landfill daily cover, landfill restoration, and eventually available for other city departments such as Parks & Rec.

The new compost facility is built on city-owned land just south of the Landfill.

Construction wrapped up in June 2024, and our landfill team has been busy participating in operation training to bring the facility online. Since the public won't interact with the facility, there's no additional traffic accessing the landfill.

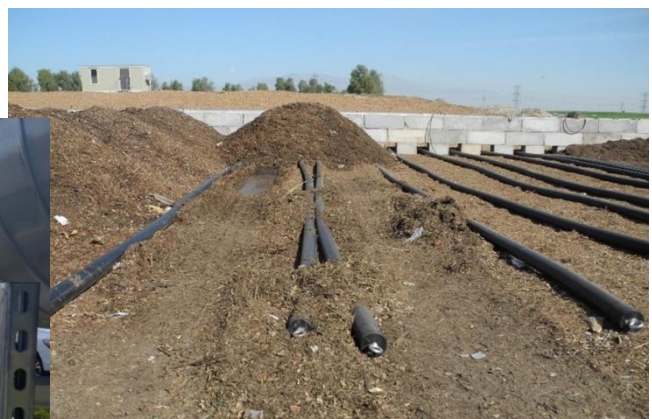


### The Composting Process



**Mixing** - Raw materials are stockpiled and mixed with a large mixer/conveyor.

**Aeration** - Mixed materials are placed in rows over aeration pipes and covered to retain heat and reduce odors. This CASP system (Covered Aerated Static Pile) blows air through the material, completing the process in about 20 days.





**Screening** - Pipes are removed, and the compost is screened to remove debris and then stockpiled for use.



## Future Plans and Benefits

**Initial Capacity** - 25,000 tons/year, with plans to increase to 50,000 tons/year.

**Potential Additions** - Cardboard, pallet grindings, and food waste.

**Uses** - Initially for landfill cover and restoration, later for other city departments.

**Environmental Impact** - Extends Landfill life by 6-8 years, delays costly new cell development, and pushes back major operations relocation by a decade.

Our composting efforts highlight the City's commitment to sustainability and innovative waste management for Billings!



# Construction Project Highlights



## Water & Sewer Projects

Project Highlights	Estimated Completion
West End Water Treatment Plant	2026
West End Reservoir	2027
Zone 4 Pump Station and Waterline	Fall 2024 – 2025
Water Main Replacements Broadwater Avenue Cedar Park Subdivision	2024
Wastewater Replacements Mountain View Blvd North Park Area, N 30th St & N 32nd St	2024
Water Treatment Facility Intake/Catwalk	2025

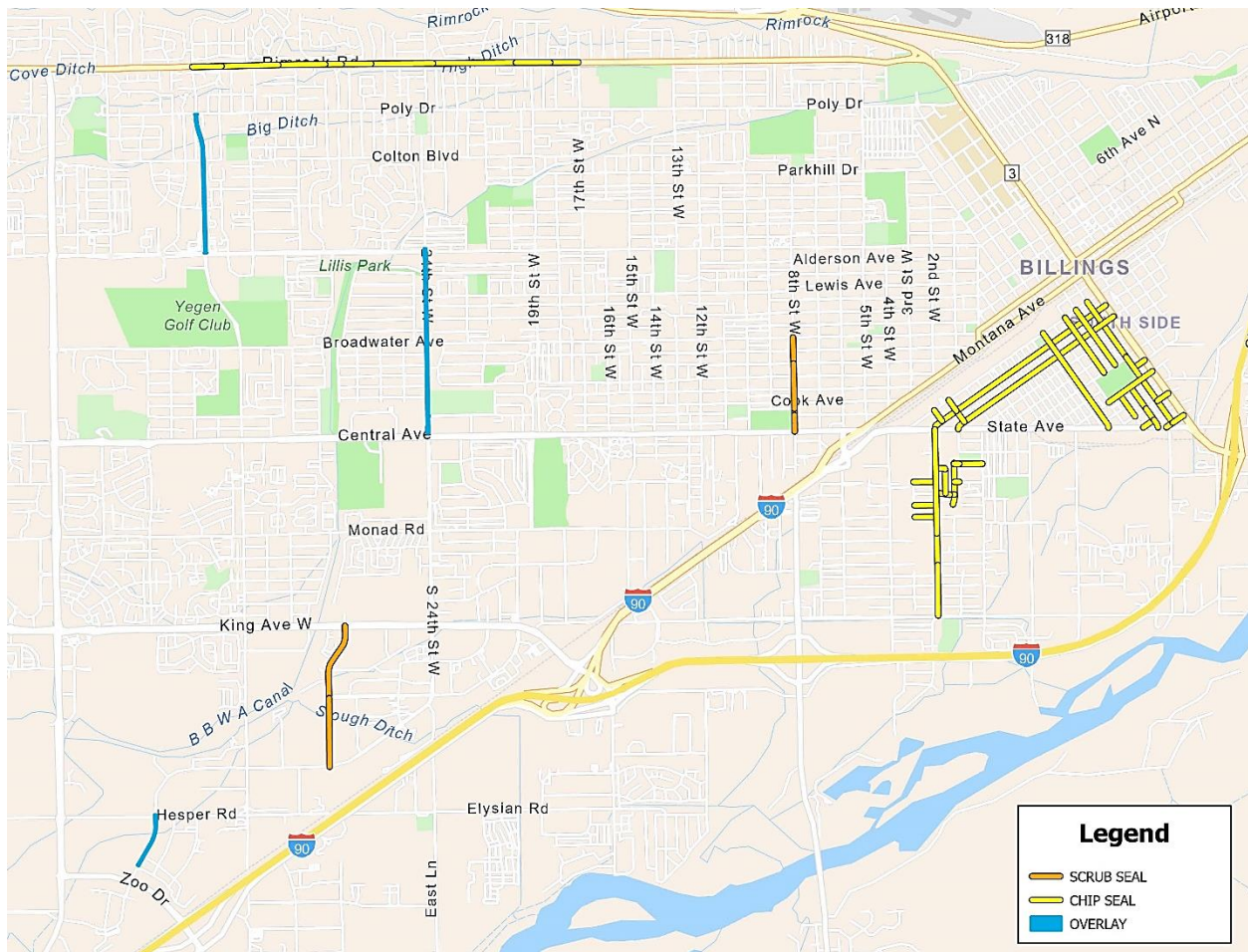
**WTF Intake/Catwalk Flood Damage**



**Zone 4 Pump Station Location (above) and Rendering (below)**







## Overlay & Chip Seal Project Locations

### Stormwater & Road Projects

Project Highlights	Estimated Completion
Wicks Lane Storm Phase I	Just Completed
Wicks Lane Storm Phase 2	2024-2025
King Ave W & 36th St W Intersection Improvements	Summer 2024
Gabel and Broso Valley Traffic Signal Improvements	Fall 2024
Downtown Street 2-Way Conversion Improvements	Summer 2025
Safe Routes to School Projects	Summer 2024
Overlay/Chip Seals	Fall 2024-Summer 2025
Traffic Calming Projects	Fall 2024
Nonmaintainable Streets Portion of 9 <sup>th</sup> Avenue South Portion of 10 <sup>th</sup> Avenue South 30 <sup>th</sup> Street South	Fall 2024
Gravel Streets Arvin Lane Hancock Drive	Just Completed
Missing Sidewalk (SRTS) Lyman Avenue Claimjumper Lane	Summer 2024





Opened on June 6th, 2024, Skyway Drive, known by the project name of Inner Belt Loop is a 6-mile roadway with multi-use path that connects the West End and Heights regions for a safe, prosperous, and well-connected Billings.



Connecting Wicks Ln to Alkali Creek Rd bid in Fall 2013 took 120 days



Connecting Alkali Creek Rd to Zimmerman Trl bid in Fall 2022 took 270 days

## Funding & Partners

Skyway Drive has been a long-term initiative made possible by local and federal funding sources. From elected officials to dedicated city staff, from business and property owners, to community organizations, the commitment of all stakeholders has been instrumental in securing \$6.3 M of the federal BUILD grant that accelerated this transformative project.

## Traffic Projections

While Skyway Drive connects to Zimmerman Trail directly, the traffic using it will be the same traffic that currently uses Airport Road so there should not be an immediate traffic increase on Zimmerman Trail. Depending on development along the corridor, Zimmerman is expected to see a mild traffic increase of 5-6% over the next 20 years. Meanwhile, MT 3 east of Zimmerman Trail will experience a traffic reduction of 19-21%. Traffic changes in the area will be closely monitored.

## Future Development

Utilities need to be installed to support attractive sustainable future development.

## Consultant

Sanderson Stewart

## Contractor

Riverside Contracting

## Fun Facts

Approximately 315,000 CY of excavation = about 1 football field at 180 feet deep/high. 10 Scrapers moving material. 20 Trucks and pups hauling gravel. D10 Dozer ripped rock in lieu of blasting. 2 stock passes and wells.



## Photo Evidence of Fun and Engagement from the Community



**Public Meetings @ the Billings Library**

Letting the community know about what we do and how we do it through outreach and engagement is important to us at Billings Public Works!

From inviting you to groundbreakings and ribbon cuttings of major community projects, to bringing you into our facilities for open house events, to teaching kids about our stormwater system at STEM days and more, we hope to have many future opportunities to share, learn, and grow together. Please follow us on social media for future events!



**Strawberry Festival July 2024**



**Public Works Week Open House May 2024**



**Billings School District STEM Day @ MSUB**



**Ribbon Cutting Ceremony Inaugural Drive @ Skyway Drive**



**Big Machine Petting Zoo**



## CONTACT US

Administration	406-657-8230
Engineering Services	406-657-8231
Environmental Affairs	406-247-8663
Solid Waste Services	406-657-8285
Street-Traffic Maintenance	406-657-8250
Utilities Customer Service	406-657-8315
After Hours Utility Emergency	406-657-8353

## COMMUNITY PARTNERS

Billings Heights Water District	406-252-0539
Montana-Dakota Utilities	406-896-4250
Northwestern Energy	888-467-2669



[BillingsMTPublicWorks.gov](http://BillingsMTPublicWorks.gov)





## 2024 Semi-Annual Report



### Summer Registration

Distribution of the 80-page 2024 Summer Activity Guide included direct mail to over 9000 households who have recently utilized the services provided by the Department. In addition to the direct mail, the Guide was inserted in the March issue of Simply Local Magazine. This magazine, which focuses on all things local, delivers over 20,000 copies to local businesses and organizations. Furthermore, staff delivered the Guide to all elementary schools in the Billings area.

The new Activity Guide features recreation programs offered during the months of May through November. Parents were able to register online beginning April 1<sup>st</sup> for all summer activities including our Adventure Camp Series, Pioneer Playhouse, Magic City Summer Camp, our Sports Camp Series, Tennis Instruction, Learn to Swim Instruction, Aquatic Day Camps, and many Special Interest programs.

With the momentum we achieve through our summer activities, this summer Guide also includes popular programming for the fall including NFL Flag Football, Adult Coed Volleyball, Girls Basketball and Tennis is Elementary, just to name a few.

Summer program registration for the month of April increased just 1% compared to last year, breaking our previous record from last year. For comparison to pre-pandemic registration, April's 2024 total registration increased by 181% from 2019. By the beginning of May, most of our summer day camps had reached their maximum enrollment.



### Aquatic Operations

Rose and South pools opened on June 5<sup>th</sup>. Our lifeguards completed over 20 hours of training, including certification and re-certification classes and our in-service training June 2<sup>nd</sup> – 4<sup>th</sup>. During in-service training, lifeguard staff performed several scenarios and skills, including CPR, back boarding, and deep-water retrieval.

Currently we have 38 lifeguards hired to supervise our municipal pools. Our goal each year is to hire at least 50 lifeguards. Being short 12 guards, we weren't unable to open and safely staff the wading pools at Pioneer and Hawthorne Parks. Our department provided three Lifeguard Certification courses during the months of May and June for new and returning employees. In addition, staff attended a variety of job fairs in the spring and set up tables at the high schools in an effort to attract summer staff and lifeguards.

Pool attendance for June was up 79% compared to 2023. The main reason for the increase was the cool and wet weather last year, ending with the 3<sup>rd</sup> wettest June on record. Thus far, we have sold 184 family season passes, 110 individual passes and 141 reduced passes for both Rose and South pools, averaging an increase of nearly 20% from last year.

## Recreation Programs

Youth Sports for winter and spring included Boys Basketball and Girls Volleyball, utilizing 3 different middle school sites with game days at Orchard Elementary. The boys participated in games and developed their skills at bi-weekly practices. We had great coaches this year and game day supervisors and scorekeepers working hard to give the kids a great experience. Girls Volleyball had a range of experienced coaches and others where this was their first opportunity to work with youth in a coaching capacity. They all did an incredible job passing on their knowledge to these young players.

### Boys Basketball by the numbers:

- 15 teams – 108 players
- 11 coaches
- 8 weeks of practice and 5 weeks of games

### Girls Volleyball by the numbers:

- 20 teams – 158 total players
- 12 coaches
- 8 weeks of practice and 5 weeks of games

Summer Recreation programs are off to a great start in 2024.

Enrollment in all camps, like last year, has been exceptional.

We have consistently maxed out enrollment in all major camps, as well as all supplemental camps that we offer. With upgraded

staffing we are able to keep excellent ratios of campers to counselors. This keeps our camps safe and our staff energized to do the best job they can do, and we are able to offer new and exciting programming.

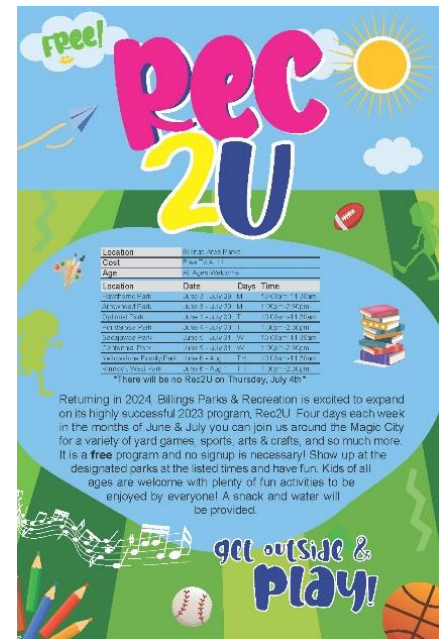
- 43 camp counselors working 30-40 hours per week
- Average of 5 camps per week with roughly 150 kids attending per week
- Dozens of parks and small business visited throughout the summer
- 6 bus drivers on staff
- 22 sport, special interest and outdoor recreation weekly camps
- 3 main camps that run for 13 weeks
- Rec2U runs for 9 weeks at 8 different parks, 4 days per week
- 2 Weeks of Bonus Camps (August 19<sup>th</sup> – 30<sup>th</sup>)

This year we have added new summer seasonal positions and have still been able to fully staff our summer, sports, aquatics, and specialty camps, along with our new and expanded Rec2U program. We had a solid group of returners to lead our camps along with many new and excited faces to add to our team. All told, 43 camp counselors handled our main all day camps, sports camps, and Rec2U.

- 3 counselors for Rose Park Aquatic camps
- 13 tennis instructors for lessons and tournaments
- 9 specialty instructors for one-week-only camps (e.g. Pickleball, Character Design, Keyboard Camps)

Our fully staffed internship program was also achieved this summer. Our 4 paid interns take charge of camps, scheduling, sports, tennis, and Rec2U.

They each have a focused set of priorities, but we go out of our way to show them as much of the Recreation field as possible. We have also required them to take part in the city wide internship program Campus Billings, hosted by Big Sky Economic Development and Better Off In Billings. Lastly, but not least, we have 6 bus drivers on staff helping our camps move around Billings.



Returning in 2024, Billings Parks & Recreation is excited to expand on its highly successful 2023 program, Rec2U. Four days each week in the months of June & July you can join us around the Magic City for a variety of yard games, sports, arts & crafts, and so much more. It is a **free** program and no signup is necessary! Show up at the designated parks at the listed times and have fun. Kids of all ages are welcome with plenty of fun activities to be enjoyed by everyone! A snack and water will be provided.





## Free Programming: Rec2U

Our highly successful pilot program Rec2U has expanded this summer! Our team now travels the Magic City Monday through Thursday, focusing on eight parks throughout the city each day of the week, offering free programming ranging from axe throwing and archery to arts & crafts, along with drinks and snacks for all participants.

In just the month of June, Rec2U saw over 600 youth participate. The average number of participants at each park for the month of June were as follows: Hawthorne Park (36), Arrowhead Park (10), Optimist Park (32), Ponderosa Park (7), Sacajawea Park (26), Centennial Park (11), Yellowstone Family Park (38), and Rimrock West Park (17).

## Adult Recreation

Adult Sports start the year off with Men's and Women's City League Basketball and Co-Ed Volleyball. Both leagues run from the beginning of January to the first week in April. City League basketball is always hugely popular and this year was no different. With 62 teams, 54 men's and 8 women's, and a total of 562 players participated in the league. Games are held at all 6 middle school gymnasiums in Billings. Each team plays 1 game per week for the 7 week regular season, and plays at least 2 games in the double elimination tournament at the end of the season. We hired on 15 referees to handle all 326 games that are played and 18 scorekeepers and site coordinators help facilitate everything else needed on site.

Co-Ed Volleyball follows a similar setup with games played every Sunday at Castle Rock Middle School. 24 teams and close to 200 players competed in 7 weeks of regular season games and a double-elimination tournament at the conclusion of the season. Only 3 staff members are needed to facilitate all 126 matches these teams play.

City League Basketball by the numbers:

- 62 teams – 562 total players
- 15 referees on staff
- 18 site coordinators and scorekeepers handle the games
- 7 weeks of regular season games
- Double-elimination tournament
- 11 week season in total

Adult Volleyball by the numbers:

- 24 teams – nearly 200 total players
- 3 staff members overseeing game days
- 7 weeks of regular season games
- Double elimination tournament
- 10 week season in total

## Adaptive Recreation Programs

The Miracle League of Billings completed its fourth season and second full year on June 8<sup>th</sup>, 2024. The spring season witnessed thirty-three total players swing into action on Saturday mornings at Landon's Miracle Field. Two separate age divisions provided eight adults and twenty-five youth the opportunity to play baseball, regardless of their ability with 11 new players making their Miracle League debut this past season!





Our new Adaptive Therapeutic Recreation program, Love Serving Autism hit the courts [and the news](#), for the very first time in February 23. Five athletes participated in the program over a 4-week period. Looking ahead, LSA will make its much-anticipated return on September 5th at the Big Sky Tennis and Pickleball Center. Currently, we have five athletes registered with many more expected to join!

## Summer Sports Camps

Summer 2024 is off to a fast break start with our Sport Camps! Basketball Camp tipped off of our sports series on June 10<sup>th</sup> with twenty-four participants dribbling, shooting, and passing their way through drills and competition on the courts at North Park.

Swinging into action the next week was our Junior Golf Lessons hosted by Matt Stricker and Exchange City Par 3. Forty-two participants between the ages of 8 and 14 learned the finer things in small groups over a 5-week period.

Kicking off next, Soccer Camp, saw fifty-seven youth participate for 4 days of camp at Amend Park

Digging its way into the schedule next, Volleyball Camp, had thirty-six athletes beat the heat in the sand at Rose Park to learn, grow, develop, and participate for 4 days in three different age divisions.

Overall, 159 youth participated in our June Sports Camps. Rounding off the last weeks of summer sports camps: Cheer and Dance Camp, Flag Football Camp, and Pickleball Camp will see that number grow greatly.



## Recreation Staff Trainings

Our Summer Camp Counselors had the opportunity to expand their skills this summer by completing Inclusion Training with MERGE, an training firm out of Boston, Massachusetts. Additionally, the counselors were provided training by Pediatric Therapy Clinic from right here in Billings. Both trainings gave tremendous insight on behaviors, what inclusion is, and meltdowns vs tantrums, as well as some tools and methods to use in various and dynamic camp settings. Over twenty new employees completed their CPR First Aid and AED certification with over sixty camp counselors completing or sustaining their certification in the past 2 years.

## Recreation Grant

With the generous help from Ted Wilson, City of Billings Grants Administrator, the Recreation Division applied for and received a coaching grant through our National Recreation and Park Association (NRPA) in June. NRPA partnered with outside vendors who specialize in providing youth coaches with resources and tools to enhance the experience of athletes “outside the lines.”

Our awarded grant, through “Positive Coaching Alliance” aims at working to unlock the life changing power of sports for all kids regardless of social or economic circumstance. The training will be geared toward fifty coaches in our NFL Flag Football, Tennis is Elementary, and Girls Basketball programs to be completed by December 31, 2024. The coaches will participate in a 60-minute online course in the coming summer, fall, and winter months.





## Special Thanks From The Recreation Department!

We would not be able to deliver such diverse and exciting opportunities to the community without the following partnerships: *Girl Scouts of Montana, Japanese Outreach Initiative via MSUB, Billings Public School District #2 Music, Billings Teachers Association, Parks Martial Arts Academy, MSUB Cheer, Big Sky Pickleball & Tennis Association, Zoo Montana Outreach, Adventure Scuba, Cedar Lane Speech, Pediatric Therapy Clinic Inc., and the Yellowstone Table Tennis Association.*

Your partnerships are invaluable to us and we are so grateful for your desire to partner with us to offer such great programs for the community! Thank you all.

## We Make Aging Fun at the Billings Community and Senior Center

The Billings Community and Senior Center has seen an increase in overall participation in programs and services compared to the previous year. In the first half of 2024, we observed a 10% increase in attendance at our programs and services. Additionally, we saw a 21% increase in meals served through our partnership with the Adult Resource Alliance.



### Adult Resource Alliance Partnership

- 1782 meals were served from January to June of 2024.

### Expanding Programs

In April 2024, several of our staff completed Fall Prevention training provided by the Montana Department of Health and Human Services. Unintentional falls are the third most common cause of injury-related death in Montana, and 1 in 4 Montanans aged 45 and older reported falling in the past year. Introducing these evidence-based Fall Prevention Programs, which help reduce falls, will improve the quality of life for adults and lessen the demand for safety services following falls.

Stepping On is a seven-week falls prevention program designed for adults aged 60 and over. It addresses risk factors for falls in both the home and community, offering practical lifestyle adjustments to help prevent falls. The program emphasizes education along with strength and balance exercises.



Stay Active & Independent for Life (SAIL) is an evidence-based, 12-week program for older adults aged 65 and above. It focuses on enhancing strength, balance, and mobility to reduce the risk of falls and improve overall quality of life. This program combines many of the elements we currently offer into a comprehensive wellness program.

### MSU Nursing Students

Our Recreation and Wellness Specialist continues to oversee MSU-B Nursing students participating in the Health Promotion Class. Typically, we have had 2-3 students, but this number is expected to increase to 6 in Fall 2024 to accommodate the growing need for student placements. This program offers

students the opportunity to work directly with the population they are likely to care for in their future careers.

During their term, each student creates a project and is given the opportunity to educate participants on topics relevant to the senior population. This experience is valuable for both our participants and the students. Our Recreation and Wellness Specialist is collaborating with professors to develop programs that students can help co-lead, allowing us to offer more affordable programs that positively impact the health of our seniors.

## Occupational Therapy Students

Our Recreation and Wellness Specialist supervised two University of Mary OT students during their capstone projects, where each student developed a program or service. Megan developed a Fall Prevention Education program called "Aging in Place," which was an evidence-based class focusing on fall prevention. This program was well-received, with 27 participants attending the 6-week course.

Anna, the other student, developed a 6-week text-message campaign to provide resources for caregivers of seniors who are homebound or have dementia. She collaborated with the Adult Resource Alliance Caregiver group to create resources that we can continue to offer in the future.

## Parks

North Park received significant updates this spring with a new bathroom, playground, picnic shelter and adult exercise equipment. With fund-raising support from EBIRD, we broke ground on a new dog park in the NW corner of the park. The playground was replaced through General Fund allocation. The new bathroom and adult exercise equipment was an upgrade from the Community Development Block Grant funds.

The new Skyline Trail along The Rims was completed and handed over to Parks this winter. Staff snow plowed the new 3 miles of trail several times over January and February. Repairs have been made to the fencing along the parking areas multiple times because of cars driving through.



Castle Rock Park received a new replacement pump this spring that transfers water from the BBWA canal to the pond in the park for irrigation water. The motor for Stewart Park irrigation pump station was pulled and rebuilt over the winter. Installation for both occurred this spring before the canal was turned on.



An additional 15 irrigation controllers with remote access and monitoring were installed in parks this spring. Currently, up to 70% of the irrigated park land can be accessed and controlled remotely by staff. This saves considerable staff time troubleshooting and traveling across town to different parks.

With the limited snow during the winter months, Parks staff installed over 800 cubic yards of engineered

wood fibers to playgrounds. This refresh of fall protection increased safety at 20 different playgrounds.

In May, we had a retirement party for two long-serving Parks professionals. Steve McConnell, our City Forester, worked in Billings for 7 years and was integral in securing the \$1 million federal urban forestry grant. Don Pulver served Billings Parks & Recreation for 37 years covering parks maintenance and forestry throughout his tenure. We are grateful for their contributions to our team and wish them the best in retirement!





## Forestry

The Forestry Department cared for 1060 trees across parkland, and planted 180 trees this spring. This included two large volunteer projects at Centennial Dog Park and the newly installed North Park Dog Park. Special thanks to Faith E Church and EBIRD for these respective projects. Forestry staff are working with Code Enforcement this season to perform weed abatements throughout the city, with over 60 completed in May and June to bring properties back into compliance. Invasive buckthorn was cleared from about an acre of densely vegetated space at Riverfront Park. Forestry staff and an AmeriCorps NCCC work crew focused on buckthorn for a week in May. The teams also patrolled and removed buckthorn on Norms Island.



In 2024, Forestry received a \$1 million dollar grant from the United States Department of Agriculture for tree planting and tree care throughout disadvantaged areas in the city. This urban forestry grant will include outreach and community education about the positive effects of an urban canopy in areas with lots of asphalt and concrete. Work in pre-determined neighborhoods in Billings is expected to commence this fall.

In addition to the retirement, the Forestry Division had the arborist leave to pursue a different job at the beginning of the year. The arborist position was filled at the end of May and started catching up on pruning park trees and storm cleanups. Brian Bourgeois has been a certified arborist for 10 years and in the tree and landscape industry for nearly 30 years, also obtaining a TCIA crew leader certification. He has lived and worked in Montana for over 20 years, with the last 3 and a half in Billings. The search for a Forester is in progress.

## Cemetery

Mountview Cemetery completed the installation of a new Variable Frequency Drive pump station this spring. The new pump station will reduce irrigation costs by decreasing energy consumption. The cemetery can also begin to modernizing its irrigation system and allow for off hour irrigation.

Repairs were completed to the main irrigation line that runs under Central Avenue from the Billings Bench Water Association Ditch near Stewart Park to Mountview Cemetery. A pressure relief valve was installed on the new pump station, that will reduce pressure on the main line, which should reduce the frequency of these costly repairs.



Cemetery by the numbers:

- 45 burials to date
- 34 grave sales to date

## Community Outreach & Volunteer Programs

A total of 1515 volunteer hours were logged in the first half of 2024, across multiple projects, programs, and our weekly volunteers. At the Senior Center, we have a dedicated team answering questions at the front desk, facilitating games and bingo on Wednesdays, to name a small portion of their contribution. This group in particular represents almost 500 hours of the total served this year, and we are so grateful for their hard work making community for our seniors. The total hours across PRPL represents a full-time employee working nearly 60 hours per week without vacations. The contribution of our volunteers is special to every employee in our department.

Arbor Day 2024 was a memorable date, mostly for the large rain storm that timed for the morning of May 9<sup>th</sup>. A handful of classes and presenters backed out on the day, but we still managed a great group of volunteers and community members to serve on this special day at Riverfront Park. Presenters led 4<sup>th</sup> grade Billings students on nature walks, taught about ecology topics, and outdoor education. A total of 15 booths and 12 4<sup>th</sup>-grade classes participated in the day. By lunch time, we had lost many of the water-logged classes back to their schools, but the sun came out and we planted a ceremonial tree in honor of the retiring Steve McConnell.

Amend Garden received an AmeriCorps VISTA member in 2024, Inanna Hencke, to support the expansion of programs at the garden. She jumped in right away, establishing a partnership with nearby Newman Elementary. The school has formed a small garden club under the supervision of their PTA, with support from school administration and families. We look forward to their continued partnership and supporting their growth in future seasons! Inanna also laid the foundation for selling produce at Healthy by Design's Gardener's Market this summer. With the incredible support of Healthy by Design, our market tent will be able to accept WIC, SNAP, and other forms of payment to make fresh produce available to low-income families and seniors. Funds raised from the sale of produce will go towards scholarships and plant starts to make gardening more accessible to new gardeners. Amend Garden has also recruited one of the highest cohorts of gardeners for 2024, and hopes to sustain numbers for future growing seasons.



PRPL partnered with the Community Development Division to apply and receive an AmeriCorps NCCC team this spring. The National Civilian Community Corps serves communities across the country and this was the first time AmeriCorps sent a team to the City of Billings. Their work spanned the department, working mainly at Amend Community Garden on infrastructure improvements, with additional projects in Forestry, Mountview Cemetery, and various parks improvement projects. This 7-person team put in nearly 1000 hours of work in Parks alone. Their stay was also supplemented by work in the Community Development Division first-time home buyers house and projects at their host site Bethlehem Lutheran Church. The crew also contributed dozens of additional volunteer hours to non-profit organizations during their 7-week stay in Billings.



In April, the stars aligned for a partial solar eclipse and a day off from school in Billings Public Schools. Our staff coordinated a preview of the Rec2U program at Castle Rock Park to provide eclipse glasses and a clear view of the sun during the eclipse. The clouds parted as the moon passed in front of the Sun and about 150 guests came to view the eclipse with us. Special thanks to Billings Public Library, Girl Scouts STEM Van, Healthy by Design, and Altana for making a special event to partner with Rec2U!

Lastly, PRPL was proud to host the

2024 Montana Trails Recreation & Parks Association statewide conference in April. Over 100 attendees, including speakers and exhibitors contributed to an excellent learning experience for parks and recreation professionals. The PRPL staff coordinated all events, speakers, conference and accommodations under the leadership of Kory Thomson, Recreation Superintendent, and Jake Milliron, Community Outreach and Engagement Coordinator, as co-chairs. The entire PRPL staff contributed to a great event which received strong support and positive feedback from the state leadership at MTRPA.







Main Office Hours: M-R 9am to 4pm

## Semi-Annual Report to Billings City Council

January 1 - June 30, 2024

Friday, August 2, 2024

- Status of the Expanded North 27th Street Tax Increment Fund for FY 24 - see attached spreadsheet with fund line items
- DBP Highlights and other work in the Expanded North 27th Street Urban Renewal District
  - Maintain ongoing meetings with new businesses in the downtown area
  - Maintain providing education on TIF & RLF via phone calls, 1-on-1 & group presentations
  - Facilitate processing CPTED grants
  - Facilitate processing Signage grants
  - Maintain regular communication with Government and news outlets
  - Maintain ongoing meetings with current & new property owners
  - Maintain meeting with current as well as new investors & developers
  - Maintain collaboration with the City's Parking Board & Division as needed
  - Collaborate with DBA & BID to promote & market downtown as a destination
  - Maintain touring vacancies with prospective tenants
  - Maintain scoping & exploring properties for future developments
  - Maintain distribution of updates about the 2-way restoration efforts
  - New Businesses/relocations
    - Seth Royal Kroft Photography at 103 N Broadway | Q1
    - Lutheran Family Services Rocky Mountains at 502 N 30th St | Q1
    - Pet Passages at 223 1st Ave N | Q1
    - Destiny Contreras Photography at 2706 2nd Ave N | Q1
    - Mediterranean Soul at 2813 2nd Ave N | Q1
    - DeKava House at 224 N 29th St | Q1
    - Empire Salon & Smoothie Lab at 212 N 29th St | Q1
    - Yesteryears Antique Mall relocates to 208 N Broadway | Q1
    - Chaikhana at 216 N Broadway | Q1
    - My Fehr Lady at 2819 2nd Ave N | Q2
    - Downtown Billings relocates to 102 N 29th St | Q2
    - Sunshine Massage at 511 N 30th St | Q2
    - Elks Lodge #394 at 213 Montana Ave | Q2
    - Live. Laugh. Montana RE Group at 2725 Montana Ave | Q2
    - 406 Memories relocates to 304 N 29th St | Q2
    - Bubble Milk at 2916 2nd Ave N | Q2
    - Music Villa at 112 N Broadway | Q2
    - Stone Feather Road at 2525 Minnesota Ave | Q2

- General Downtown Billings Work (DBA, DBP, & BID)
  - Ongoing photography of downtown scenery, architecture, & activities during all four seasons & signature downtown events
  - Facilitation of a successful relocation of the Yesteryears Antique Mall
  - Securing Council's approval on the Rockman Project involving bringing a new hotel
  - Pausing new TIF applications until the second week of August
  - Finishing a 4th successfully sold out Mug Crawl event in February
  - Finishing a 41st successful St. Patrick's Parade & Celtic Fair in March
  - Promoting First Fridays & Art Walk nights
  - Re-launching the Battle of the Plans in March
  - Drafting a small TIF program for sidewalks & trees or greenery
  - Relocating the DBA offices to 102 N 29th St where Yesteryears Antique Mall used to be
  
- Development Project Incentives (TIF grant projects)
  - Completed
    - Art House Cinema Phase II
    - Mediterranean Soul Signage
    - My Fehr Lady signage
    - NOVA CPTED
    - Alberta Bair Theater CPTED
    - Yesteryears Relocation
    - Yesteryears Signage
  
  - In Progress
    - Downtown Properties, LLC/Stone Building
    - Montana Rescue Mission
    - Old Town Flats
    - Old Billings Hardware Building
    - Kibler & Krich
    - Rockman Project/Hotel
    - Downtown Family Pharmacy Signage
    - Elk's Lodge Signage
    - Music Villa signage
    - Love & SONShine CPTED
    - Live.Laugh.Montana Signage
    - Skypoint Glow Up project
    - 2-way project
  
  - On Deck
    - 5th Ave Corridor
    - 25th Street Pedestrian Bridge
    - City-owned assets (Babcock Theater, Billings Depot, Alberta Bair Theater)
  
  - TIF inquiries
    - 43 new TIF inquiries (large developments, facade improvements, signage, CPTED, energy efficiency, streetscaping & landscaping, change of use, housing)



Rank	RO	ADO	ST	Locid	Airport Name	City	Svc Lvl	Hub	2023 Landed Weight (lbs.)	2022 Landed Weight (lbs.)	% Change
1	AL	AAL	AK	ANC	Ted Stevens	Anchorage	P	M	25,635,248,458	24,265,396,895	5.65%
2	SO	MEM	TN	MEM	Memphis	Memphis	P	M	22,952,291,210	23,402,185,775	-1.92%
3	SO	MEM	KY	SDF	Louisville	Louisville	P	S	17,056,069,529	18,168,215,285	-6.12%
4	SO	ORL	FL	MIA	Miami International	Miami	P	L	11,466,632,402	10,667,545,448	7.49%
5	SO	MEM	KY	CVG	Cincinnati/Northern	Hebron	P	M	10,719,702,928	9,236,796,404	16.05%
6	WP	LAX	CA	LAX	Los Angeles	Los Angeles	P	L	8,620,594,080	11,461,211,039	-24.78%
7	GL	CHI	IL	ORD	Chicago O'Hare	Chicago	P	L	7,259,899,848	7,840,745,746	-7.41%
8	GL	CHI	IN	IND	Indianapolis	Indianapolis	P	M	5,151,459,190	7,230,550,380	-28.75%
9	EA	NYC	NY	JFK	John F Kennedy	New York	P	L	4,946,583,226	4,456,997,828	10.98%
10	WP	LAX	CA	ONT	Ontario	Ontario	P	M	4,561,798,355	5,203,676,097	-12.34%
11	SW	TEX	TX	DFW	Dallas-Fort Worth	Fort Worth	P	L	3,861,263,150	4,266,864,656	-9.51%
12	SO	ATL	GA	ATL	Hartsfield -	Atlanta	P	L	3,355,488,476	3,356,099,476	-0.02%
13	WP	SFO	CA	OAK	San Francisco Bay	Oakland	P	M	3,323,103,217	3,726,916,410	-10.84%
14	WP	HNL	HI	HNL	Daniel K Inouye	Honolulu	P	L	3,113,505,000	3,220,717,400	-3.33%
15	GL	CHI	IL	RFD	Chicago/Rockford	Rockford	P	N	3,097,663,076	3,424,546,813	-9.55%
16	NM	SEA	WA	SEA	Seattle-Tacoma	Seattle	P	L	2,746,134,200	2,745,015,570	0.04%
17	EA	NYC	NJ	EWB	Newark Liberty	Newark	P	L	2,715,429,720	3,028,084,340	-10.33%
18	EA	HAR	PA	PHL	Philadelphia	Philadelphia	P	L	2,710,953,610	3,251,579,720	-16.63%
19	SW	TEX	TX	IAH	George Bush	Houston	P	L	2,319,717,572	2,254,043,508	2.91%
20	SW	TEX	TX	AFW	Perot Field/Fort	Fort Worth	R	-	2,045,607,541	2,524,145,434	-18.96%
21	WP	PHX	AZ	PHX	Phoenix Sky	Phoenix	P	L	1,998,256,486	2,255,116,956	-11.39%
22	NM	SEA	OR	PDX	Portland	Portland	P	M	1,996,852,405	2,383,881,608	-16.24%
23	SO	ATL	PR	SJU	Luis Munoz Marin	San Juan	P	M	1,751,263,616	1,700,308,624	3.00%
24	NM	DEN	CO	DEN	Denver	Denver	P	L	1,595,144,224	1,806,450,290	-11.70%
25	WP	LAX	CA	SBD	San Bernardino	San Bernardino	P	N	1,333,393,540	1,333,244,000	0.01%
26	EA	WAS	MD	BWI	Baltimore/Washingt	Glen Burnie	P	L	1,329,127,000	1,467,579,905	-9.43%
27	WP	SFO	CA	SFO	San Francisco	San Francisco	P	L	1,130,957,000	1,155,243,550	-2.10%
28	NE	ANE	CT	BDL	Bradley	Windsor Locks	P	M	1,052,126,820	1,259,617,920	-16.47%
29	SO	ORL	FL	MCO	Orlando	Orlando	P	L	1,030,557,430	1,243,274,590	-17.11%
30	NM	DEN	UT	SLC	Salt Lake City	Salt Lake City	P	L	1,023,418,894	1,266,129,413	-19.17%
31	NE	ANE	MA	BOS	General Edward	Boston	P	L	997,226,500	1,165,047,900	-14.40%
32	SO	ORL	FL	LAL	Lakeland Linder	Lakeland	R	-	903,293,000	856,905,000	5.41%
33	SO	MEM	NC	GSO	Piedmont Triad	Greensboro	P	S	893,335,705	1,068,046,105	-16.36%
34	SO	ORL	FL	TPA	Tampa	Tampa	P	L	816,186,930	1,325,924,240	-38.44%
35	SW	TEX	TX	SAT	San Antonio	San Antonio	P	M	786,693,470	914,276,002	-13.95%
36	SW	TEX	TX	LRD	Laredo	Laredo	P	N	775,220,231	808,464,069	-4.11%
37	SW	TEX	TX	ELP	El Paso	El Paso	P	S	768,400,616	777,989,264	-1.23%
38	NE	ANE	NH	MHT	Manchester Boston	Manchester	P	S	729,424,980	585,703,730	24.54%
39	SO	MEM	NC	CLT	Charlotte/Douglas	Charlotte	P	L	727,748,760	811,152,970	-10.28%
40	GL	DMA	MN	MSP	Minneapolis-St	Minneapolis	P	L	725,187,225	1,139,128,948	-36.34%
41	SW	TEX	TX	AUS	Austin-Bergstrom	Austin	P	L	704,802,540	796,254,474	-11.49%
42	CE	ACE	MO	MCI	Kansas City	Kansas City	P	M	701,661,790	736,857,188	-4.78%
43	GL	DET	MI	DTW	Detroit Metro	Detroit	P	L	699,372,836	885,466,078	-21.02%
44	EA	WAS	VA	RIC	Richmond	Highland	P	S	694,904,210	619,824,370	12.11%
45	GL	DET	OH	LCK	Rickenbacker	Columbus	P	N	683,221,199	1,024,152,504	-33.29%
46	EA	HAR	PA	ABE	Lehigh Valley	Allentown	P	N	680,234,950	642,827,000	5.82%
47	NM	SEA	WA	GEG	Spokane	Spokane	P	S	623,220,893	565,057,526	10.29%
48	SO	MEM	NC	RDU	Raleigh-Durham	Raleigh	P	M	620,666,155	734,185,480	-15.46%
49	WP	SFO	CA	SMF	Sacramento	Sacramento	P	M	619,384,950	613,873,110	0.90%
50	NM	SEA	WA	BFJ	Boeing Field/King	Seattle	P	N	601,203,215	642,200,872	-6.38%
51	WP	PHX	NV	RNO	Reno/Tahoe	Reno	P	M	576,130,140	651,498,150	-11.57%
52	SW	LAN	NM	ABQ	Albuquerque	Albuquerque	P	M	549,260,680	577,054,794	-4.82%
53	EA	HAR	PA	PIT	Pittsburgh	Pittsburgh	P	M	549,182,598	687,478,361	-20.12%
54	SO	ATL	SC	GSP	Greenville	Greer	P	S	542,527,148	592,756,824	-8.47%
55	NM	HLN	MT	BIL	Billings Logan	Billings	P	N	527,658,325	543,269,518	-2.87%

Rank	RO	ADO	ST	Locid	Airport Name	City	Svc Lvl	Hub	2023 Landed Weight (lbs.)	2022 Landed Weight (lbs.)	% Change
56	WP	PHX	NV	LAS	Harry Reid	Las Vegas	P	L	513,484,350	465,886,540	10.22%
57	WP	LAX	CA	SAN	San Diego	San Diego	P	L	512,590,950	648,760,250	-20.99%
58	SO	ORL	FL	JAX	Jacksonville	Jacksonville	P	M	504,786,493	592,011,345	-14.73%
59	GL	CHI	WI	MKE	General Mitchell	Milwaukee	P	M	502,454,228	564,523,588	-10.99%
60	SO	ORL	FL	FLL	Fort	Fort Lauderdale	P	L	485,510,400	506,270,200	-4.10%
61	WP	SFO	CA	MHR	Sacramento Mather	Sacramento	R	-	461,106,000	492,628,750	-6.40%
62	NM	HLN	ID	BOI	Boise Air	Boise	P	M	459,952,449	469,845,211	-2.11%
63	EA	WAS	VA	IAD	Washington Dulles	Dulles	P	L	456,201,290	521,158,450	-12.46%
64	CE	ACE	NE	OMA	Eppley Airfield	Omaha	P	M	453,873,078	548,913,330	-17.31%
65	SW	LAN	LA	MSY	Louis Armstrong	Kenner	P	M	439,318,790	543,975,400	-19.24%
66	GL	DET	OH	CLE	Cleveland-Hopkins	Cleveland	P	M	415,518,280	471,738,600	-11.92%
67	EA	HAR	PA	MDT	Harrisburg	Harrisburg	P	S	407,105,240	466,913,230	-12.81%
68	GL	DMA	ND	FAR	Hector International	Fargo	P	S	406,090,395	409,949,060	-0.94%
69	SO	ATL	SC	CAE	Columbia Metro	Columbia	P	S	396,915,350	545,570,460	-27.25%
70	SO	MEM	TN	BNA	Nashville	Nashville	P	L	396,489,600	654,343,291	-39.41%
71	EA	NYC	NY	SYR	Syracuse Hancock	Syracuse	P	S	393,991,100	436,236,000	-9.68%
72	GL	DMA	SD	FSD	Joe Foss Field	Sioux Falls	P	S	373,934,060	371,589,710	0.63%
73	WP	HNL	HI	OGG	Kahului	Kahului	P	M	367,286,800	387,877,300	-5.31%
74	SO	ATL	PR	BQN	Rafael Hernandez	Aguadilla	P	N	365,413,640	377,703,400	-3.25%
75	EA	NYC	NY	SWF	New York Stewart	Newburgh	P	N	363,352,600	343,566,500	5.76%
76	WP	HNL	HI	KOA	Ellison Onizuka	Kailua Kona	P	S	354,689,000	459,287,500	-22.77%
77	SW	TEX	TX	LBB	Lubbock Preston	Lubbock	P	S	347,355,845	379,748,477	-8.53%
78	WP	HNL	HI	LIH	Lihue	Lihue	P	S	346,940,900	304,943,500	13.77%
79	CE	ACE	MO	STL	St Louis Lambert	St. Louis	P	M	342,057,100	546,270,580	-37.38%
80	SW	ARO	OK	TUL	Tulsa International	Tulsa	P	S	332,278,377	387,758,826	-14.31%
81	SO	MEM	TN	TYS	McGhee Tyson	Alcoa	P	S	327,847,500	320,159,630	2.40%
82	SO	JAN	AL	HSV	Huntsville	Huntsville	P	S	319,811,640	328,165,640	-2.55%
83	SW	LAN	LA	SHV	Shreveport	Shreveport	P	N	315,976,648	332,182,570	-4.88%
84	CE	ACE	IA	CID	The Eastern Iowa	Cedar Rapids	P	S	315,443,514	327,652,333	-3.73%
85	EA	NYC	NY	BUF	Buffalo Niagara	Buffalo	P	S	307,739,783	345,348,405	-10.89%
86	EA	NYC	NY	ROC	Frederick	Rochester	P	S	305,526,498	363,036,650	-15.84%
87	CE	ACE	IA	DSM	Des Moines	Des Moines	P	S	266,782,750	271,040,630	-1.57%
88	SW	ARO	OK	OKC	Will Rogers World	Oklahoma City	P	S	254,542,550	271,319,350	-6.18%
89	WP	SFO	CA	SJC	Norman Y Mineta	San Jose	P	M	243,454,800	203,872,700	19.42%
90	SO	ORL	FL	PBI	Palm Beach	West Palm	P	M	240,968,000	0	N/A
91	WP	SFO	CA	SCK	Stockton Metro	Stockton	P	N	231,652,000	263,996,000	-12.25%
92	GL	DET	MI	GRR	Gerald R Ford	Grand Rapids	P	S	229,359,900	250,882,800	-8.58%
93	WP	LAX	CA	RIV	March ARB	Riverside	R	-	213,977,000	271,143,000	-21.08%
94	CE	ACE	KS	ICT	Wichita Dwight D	Wichita	P	S	211,847,600	246,490,170	-14.05%
95	GL	DET	MI	YIP	Willow Run	Detroit	GA	-	211,465,872	215,145,684	-1.71%
96	NM	HLN	MT	GTF	Great Falls	Great Falls	P	N	208,639,750	219,470,071	-4.93%
97	SO	JAN	AL	BHM	Birmingham-	Birmingham	P	S	207,861,305	166,855,040	24.58%
98	WP	HNL	GU	GUM	Guam International	Tamuning	P	S	207,400,103	255,512,570	-18.83%
99	GL	DET	MI	LAN	Capital Region	Clinton	P	N	204,762,816	245,142,370	-16.47%
100	EA	WAS	VA	ORF	Norfolk	Norfolk	P	S	198,913,450	231,058,470	-13.91%
101	WP	HNL	HI	ITO	Hilo International	Hilo	P	S	187,791,300	161,810,600	16.06%
102	SO	ORL	FL	RSW	Southwest Florida	Fort Myers	P	M	177,674,600	177,507,350	0.09%
103	EA	NYC	NY	ALB	Albany	Albany	P	S	176,432,144	182,539,980	-3.35%
104	SO	ATL	GA	ABY	Southwest Georgia	Albany	P	N	169,066,500	242,646,000	-30.32%
105	SO	JAN	AL	BFM	Mobile International	Mobile	GA	-	166,732,800	169,382,850	-1.56%
106	GL	CHI	IN	FWA	Fort Wayne	Fort Wayne	P	N	165,767,254	220,496,386	-24.82%
107	WP	PHX	AZ	TUS	Tucson	Tucson	P	S	158,184,398	157,762,704	0.27%
108	WP	SFO	CA	FAT	Fresno Yosemite	Fresno	P	S	157,281,760	170,344,640	-7.67%
109	SO	ATL	SC	CHS	Charleston	Charleston	P	M	152,720,230	148,797,500	2.64%
110	GL	DET	OH	TOL	Eugene F Kranz	Toledo	P	N	149,126,556	255,502,032	-41.63%



Rank	RO	ADO	ST	Locid	Airport Name	City	Svc Lvl	Hub	2023 Landed Weight (lbs.)	2022 Landed Weight (lbs.)	% Change
111	SW	TEX	TX	HRL	Valley International	Harlingen	P	S	148,604,250	226,776,350	-34.47%
112	SW	ARO	AR	LIT	Bill and Hillary	Little Rock	P	S	146,634,100	171,165,156	-14.33%
113	AL	AAL	AK	FAI	Fairbanks	Fairbanks	P	S	138,209,050	177,386,502	-22.09%
114	CE	ACE	MO	SGF	Springfield-	Springfield	P	S	136,629,440	138,284,560	-1.20%
115	SW	LAN	LA	LFT	Lafayette	Lafayette	P	N	135,930,000	149,886,000	-9.31%
116	EA	WAS	VA	ROA	Roanoke/Blacksbur	Roanoke	P	N	133,518,180	137,471,800	-2.88%
117	NE	ANE	RI	PVD	Rhode Island Tf	Warwick	P	S	122,425,500	156,572,000	-21.81%
118	GL	CHI	WI	MSN	Dane County	Madison	P	S	121,317,200	185,445,950	-34.58%
119	WP	LAX	CA	SNA	John	Santa Ana	P	M	120,513,504	121,347,342	-0.69%
120	SO	JAN	MS	JAN	Jackson-Medgar	Jackson	P	S	108,768,000	0	N/A
121	NE	ANE	ME	BGR	Bangor	Bangor	P	N	107,674,044	70,857,426	51.96%
122	WP	LAX	CA	LGB	Long Beach	Long Beach	P	S	105,943,540	111,345,040	-4.85%
123	GL	CHI	IN	SBN	South Bend	South Bend	P	N	104,563,305	117,507,122	-11.02%
124	NM	DEN	CO	COS	City of Colorado	Colorado	P	S	99,939,588	101,581,000	-1.62%
125	GL	DET	MI	FNT	Bishop	Flint	P	N	91,766,400	88,557,200	3.62%
126	NE	ANE	ME	PWM	Portland	Portland	P	S	90,014,055	0	N/A
127	SO	ORL	FL	PNS	Pensacola	Pensacola	P	S	89,227,100	0	N/A
128	GL	CHI	IL	PIA	General Downing -	Peoria	P	N	86,575,540	99,653,600	-13.12%
129	GL	CHI	IN	GYG	Gary/Chicago	Gary	GA	-	82,891,344	105,121,212	-21.15%
130	SO	ORL	FL	TLH	Tallahassee	Tallahassee	P	N	67,338,725	0	N/A
131	GL	DMA	MN	RST	Rochester	Rochester	P	N	65,267,147	103,968,991	-37.22%
132	SO	ATL	GA	SAV	Savannah/Hilton	Savannah	P	S	64,619,300	0	N/A
133	GL	DET	OH	DAY	James M Cox	Dayton	P	S	61,375,332	58,768,602	4.44%
134	NE	ANE	VT	BTW	Patrick Leahy	Burlington	P	S	60,357,800	0	N/A
135	SO	MEM	TN	CHA	Lovell Field	Chattanooga	P	S	60,196,872	56,343,110	6.84%
136	GL	CHI	WI	ATW	Appleton	Appleton	P	N	54,380,200	111,591,500	-51.27%
137	SW	TEX	TX	SKF	Kelly Field	San Antonio	GA	-	50,530,300	81,814,000	-38.24%
138	GL	DMA	MN	TVF	Thief River Falls	Thief River Falls	CS	-	35,765,652	36,472,361	-1.94%
139	EA	NYC	NY	IAG	Niagara Falls	Niagara Falls	P	N	33,036,631	27,902,756	18.40%
140	NM	SEA	WA	PAE	Seattle Paine Field	Everett	P	N	26,532,720	28,754,000	-7.73%
141	GL	DMA	SD	RAP	Rapid City	Rapid City	P	N	19,860,100	0	N/A
142	GL	DET	MI	PLN	Pellston	Pellston	P	N	11,341,700	0	N/A
143	SW	TEX	TX	BRO	Brownsville/South	Brownsville	P	N	9,326,170	17,841,994	-47.73%
144	NE	ANE	NH	PSM	Portsmouth	Portsmouth	P	N	7,847,401	3,410,444	130.10%
145	CE	ACE	KS	GCK	Garden City	Garden City	P	N	6,595,820	7,452,400	-11.49%
146	GL	DET	MI	IWD	Gogebic/Iron	Ironwood	CS	-	5,016,030	4,969,740	0.93%
147	SW	LAN	NM	GUP	Gallup Municipal	Gallup	GA	-	4,272,660	3,047,975	40.18%
148	EA	WAS	MD	HGR	Hagerstown	Hagerstown	P	N	1,913,128	553,570	245.60%
149	SW	LAN	NM	TCC	Tucumcari	Tucumcari	GA	-	1,892,750	1,859,750	1.77%
150	SW	TEX	TX	HOU	William P Hobby	Houston	P	M	472,830	299,788	57.72%

Rank	RO	ST	Locid	City	Airport Name	S/L	Hub	CY 23 Enplanements	CY 22 Enplanements	% Change
1	SO	GA	ATL	Atlanta	Hartsfield - Jackson Atlanta International	P	L	50,950,023	45,396,001	12.23%
2	SW	TX	DFW	Fort Worth	Dallas-Fort Worth International	P	L	39,246,196	35,345,138	11.04%
3	NM	CO	DEN	Denver	Denver International	P	L	37,863,966	33,773,832	12.11%
4	WP	CA	LAX	Los Angeles	Los Angeles International	P	L	36,676,975	32,326,616	13.46%
5	GL	IL	ORD	Chicago	Chicago O'Hare International	P	L	35,843,081	33,120,474	8.22%
6	EA	NY	JFK	New York	John F Kennedy International	P	L	30,493,867	27,154,885	12.30%
7	SO	FL	MCO	Orlando	Orlando International	P	L	28,033,177	24,469,733	14.56%
8	WP	NV	LAS	Las Vegas	Harry Reid International	P	L	27,896,019	25,480,500	9.48%
9	SO	NC	CLT	Charlotte	Charlotte/Douglas International	P	L	25,896,193	23,100,300	12.10%
10	SO	FL	MIA	Miami	Miami International	P	L	24,716,890	23,949,892	3.20%
11	NM	WA	SEA	Seattle	Seattle-Tacoma International	P	L	24,594,202	22,157,862	11.00%
12	EA	NJ	EWR	Newark	Newark Liberty International	P	L	24,505,862	21,774,690	12.54%
13	WP	CA	SFO	San Francisco International Airport	San Francisco International	P	L	24,191,117	20,411,420	18.52%
14	WP	AZ	PHX	Phoenix	Phoenix Sky Harbor International	P	L	23,880,446	21,852,586	9.28%
15	SW	TX	IAH	Houston	George Bush Intcntl/Houston	P	L	22,228,829	19,814,052	12.19%
16	NE	MA	BOS	Boston	General Edward Lawrence Logan International	P	L	19,962,577	17,443,775	14.44%
17	SO	FL	FLL	Fort Lauderdale	Fort Lauderdale/Hollywood International	P	L	17,042,632	15,370,165	10.88%
18	GL	MN	MSP	Minneapolis	Minneapolis-St Paul International/Wold-Chamberlain	P	L	17,019,086	15,242,089	11.66%
19	EA	NY	LGA	New York	Laguardia	P	L	16,173,072	14,367,463	12.57%
20	GL	MI	DTW	Detroit	Detroit Metro Wayne County	P	L	15,378,558	13,751,197	11.83%
21	EA	PA	PHL	Philadelphia	Philadelphia International	P	L	13,656,020	12,421,168	9.94%
22	NM	UT	SLC	Salt Lake City	Salt Lake City International	P	L	12,905,239	12,383,843	4.21%
23	EA	MD	BWI	Glen Burnie	Baltimore/Washington International Thurgood Marshall	P	L	12,849,626	11,151,169	15.23%
24	EA	VA	DCA	Arlington	Ronald Reagan Washington Ntl	P	L	12,365,011	11,553,850	7.02%
25	WP	CA	SAN	San Diego	San Diego International	P	L	12,190,159	11,162,224	9.21%
26	EA	VA	IAD	Dulles	Washington Dulles International	P	L	12,073,231	10,266,324	17.60%
27	SO	FL	TPA	Tampa	Tampa International	P	L	11,677,560	10,539,459	10.80%
28	SO	TN	BNA	Nashville	Nashville International	P	L	11,227,159	9,829,062	14.22%
29	SW	TX	AUS	Austin	Austin-Bergstrom International	P	L	10,833,394	10,382,573	4.34%
30	GL	IL	MDW	Chicago	Chicago Midway International	P	L	10,659,401	9,650,281	10.46%
31	WP	HI	HNL	Honolulu	Daniel K Inouye International	P	L	10,149,761	8,828,395	14.97%
			31				L Count			
32	SW	TX	DAL	Dallas	Dallas Love Field	P	M	8,559,009	7,819,129	9.46%
33	NM	OR	PDX	Portland	Portland International	P	M	8,123,024	7,241,882	12.17%
34	CE	MO	STL	St. Louis	St Louis Lambert International	P	M	7,307,544	6,709,080	8.92%
35	SO	NC	RDU	Raleigh	Raleigh-Durham International	P	M	7,118,953	5,849,665	21.70%
36	SW	TX	HOU	Houston	William P Hobby	P	M	6,800,214	6,462,948	5.22%



Rank	RO	ST	Locid	City	Airport Name	S/L	Hub	CY 23 Enplanements	CY 22 Enplanements	% Change
37	WP	CA	SMF	Sacramento	Sacramento International	P	M	6,371,895	6,040,824	5.48%
38	SW	LA	MSY	Kenner	Louis Armstrong New Orleans International	P	M	6,309,196	5,931,899	6.36%
39	WP	CA	SJC	San Jose	Norman Y Mineta San Jose International	P	M	5,958,813	5,590,137	6.60%
40	SO	PR	SJU	San Juan	Luis Munoz Marin International	P	M	5,954,281	5,039,771	18.15%
41	WP	CA	SNA	Santa Ana	John Wayne/Orange County	P	M	5,706,292	5,536,313	3.07%
42	CE	MO	MCI	Kansas City	Kansas City International	P	M	5,654,068	4,796,476	17.88%
43	WP	CA	OAK	Oakland	Metro Oakland International	P	M	5,520,778	5,506,232	0.26%
44	SW	TX	SAT	San Antonio	San Antonio International	P	M	5,336,674	4,751,610	12.31%
45	SO	FL	RSW	Fort Myers	Southwest Florida International	P	M	4,963,261	5,132,694	-3.30%
46	GL	OH	CLE	Cleveland	Cleveland-Hopkins International	P	M	4,803,789	4,237,795	13.36%
47	GL	IN	IND	Indianapolis	Indianapolis International	P	M	4,788,308	4,209,416	13.75%
48	EA	PA	PIT	Pittsburgh	Pittsburgh International	P	M	4,492,980	3,918,968	14.65%
49	SO	KY	CVG	Hebron	Cincinnati/Northern Kentucky International	P	M	4,287,722	3,702,997	15.79%
50	GL	OH	CMH	Columbus	John Glenn Columbus International	P	M	4,095,178	3,618,555	13.17%
51	SO	FL	PBI	West Palm Beach	Palm Beach International	P	M	3,815,644	3,257,730	17.13%
52	WP	HI	OGG	Kahului	Kahului	P	M	3,745,866	4,125,311	-9.20%
53	SO	FL	JAX	Jacksonville	Jacksonville International	P	M	3,619,735	3,177,393	13.92%
54	WP	CA	ONT	Ontario	Ontario International	P	M	3,181,161	2,840,758	11.98%
55	WP	CA	BUR	Burbank	Bob Hope	P	M	3,132,019	3,054,729	2.53%
56	NE	CT	BDL	Windsor Locks	Bradley International	P	M	3,122,158	2,844,713	9.75%
57	SO	SC	CHS	Charleston	Charleston AFB/International	P	M	3,032,677	2,608,497	16.26%
58	GL	WI	MKE	Milwaukee	General Mitchell International	P	M	2,936,382	2,671,281	9.92%
59	AL	AK	ANC	Anchorage	Ted Stevens Anchorage International	P	M	2,681,811	2,604,308	2.98%
60	SW	NM	ABQ	Albuquerque	Albuquerque International Sunport	P	M	2,605,163	2,317,836	12.40%
61	CE	NE	OMA	Omaha	Eppley Airfield	P	M	2,464,397	2,204,395	11.79%
62	SO	TN	MEM	Memphis	Memphis International	P	M	2,399,856	2,163,692	10.91%
63	EA	VA	RIC	Highland Springs	Richmond International	P	M	2,399,207	2,042,834	17.45%
64	NM	ID	BOI	Boise	Boise Air Trml/Gowen Field	P	M	2,369,164	2,230,467	6.22%
			33				M Count			
65	EA	VA	ORF	Norfolk	Norfolk International	P	S	2,307,887	2,065,116	11.76%
66	EA	NY	BUF	Buffalo	Buffalo Niagara International	P	S	2,291,949	2,007,508	14.17%
67	SO	KY	SDF	Louisville	Louisville Muhammad Ali International	P	S	2,267,997	1,893,647	19.77%
68	WP	NV	RNO	Reno	Reno/Tahoe International	P	S	2,251,808	2,132,856	5.58%
69	SO	FL	SRQ	Sarasota	Sarasota/Bradenton International	P	S	2,144,700	1,911,999	12.17%
70	SW	OK	OKC	Oklahoma City	Will Rogers World	P	S	2,135,106	1,928,418	10.72%
71	WP	HI	KOA	Kailua Kona	Ellison Onizuka Kona International at Keahole	P	S	2,097,042	2,006,013	4.54%
72	SW	TX	ELP	El Paso	El Paso International	P	S	2,018,134	1,931,067	4.51%
73	NM	WA	GEG	Spokane	Spokane International	P	S	2,002,283	1,905,541	5.08%

Rank	RO	ST	Locid	City	Airport Name	S/L	Hub	CY 23 Enplanements	CY 22 Enplanements	% Change
74	WP	AZ	TUS	Tucson	Tucson International	P	S	1,925,544	1,699,305	13.31%
75	SO	GA	SAV	Savannah	Savannah/Hilton Head International	P	S	1,909,539	1,726,444	10.61%
76	GL	MI	GRR	Grand Rapids	Gerald R Ford International	P	S	1,899,740	1,716,904	10.65%
77	WP	CA	LGB	Long Beach	Long Beach (Daugherty Field)	P	S	1,837,622	1,600,987	14.78%
78	WP	HI	LIH	Lihue	Lihue	P	S	1,814,359	1,786,786	1.54%
79	NE	RI	PVD	Warwick	Rhode Island T.F. Green International	P	S	1,732,901	1,571,905	10.24%
80	SO	SC	MYR	Myrtle Beach	Myrtle Beach International	P	S	1,658,984	1,706,591	-2.79%
81	WP	CA	PSP	Palm Springs	Palm Springs International	P	S	1,625,320	1,499,987	8.36%
82	SW	OK	TUL	Tulsa	Tulsa International	P	S	1,571,585	1,447,126	8.60%
83	CE	IA	DSM	Des Moines	Des Moines International	P	S	1,519,235	1,368,130	11.04%
84	SO	AL	BHM	Birmingham	Birmingham-Shuttlesworth International	P	S	1,498,989	1,331,035	12.62%
85	SO	FL	SFB	Sanford	Orlando Sanford International	P	S	1,446,878	1,367,935	5.77%
86	EA	NY	SYR	Syracuse	Syracuse Hancock International	P	S	1,412,838	1,244,921	13.49%
87	SO	TN	TYS	Alcoa	McGhee Tyson	P	S	1,382,189	1,216,383	13.63%
88	EA	NY	ALB	Albany	Albany International	P	S	1,376,478	1,277,329	7.76%
89	SO	FL	PNS	Pensacola	Pensacola International	P	S	1,365,974	1,211,919	12.71%
90	EA	NY	ROC	Rochester	Frederick Douglass/Greater Rochester International	P	S	1,325,285	1,156,276	14.62%
91	SO	SC	GSP	Greer	Greenville Spartanburg International	P	S	1,258,715	1,070,422	17.59%
92	SO	FL	PIE	Clearwater	St Pete-Clearwater International	P	S	1,246,317	1,221,120	2.06%
93	NM	MT	BZN	Bozeman	Bozeman Yellowstone International	P	S	1,230,023	1,136,170	8.26%
94	WP	CA	FAT	Fresno	Fresno Yosemite International	P	S	1,201,789	1,077,710	11.51%
95	NM	CO	COS	Colorado Springs	City of Colorado Springs Municipal	P	S	1,192,117	1,080,060	10.38%
96	EA	NY	HPN	White Plains	Westchester County	P	S	1,156,197	916,700	26.13%
97	SO	NC	AVL	Asheville	Asheville Regional	P	S	1,125,935	919,929	22.39%
98	SO	FL	VPS	Valparaiso	Eglin AFB/Destin-Ft Walton Beach	P	S	1,116,717	985,567	13.31%
99	NE	ME	PWM	Portland	Portland International Jetport	P	S	1,114,668	982,834	13.41%
100	SW	AR	LIT	Little Rock	Bill and Hillary Clinton Ntl/Adams Field	P	S	1,097,465	983,530	11.58%
101	GL	WI	MSN	Madison	Dane County Regional/Truax Field	P	S	1,037,959	916,230	13.29%
102	SW	AR	XNA	Bentonville	Northwest Arkansas Ntl	P	S	972,866	812,848	19.69%
103	WP	AZ	IWA	Mesa	Phoenix-Mesa Gateway	P	S	964,132	973,491	-0.96%
104	SO	FL	PGD	Punta Gorda	Punta Gorda	P	S	949,732	920,673	3.16%
105	SO	NC	GSO	Greensboro	Piedmont Triad International	P	S	903,724	791,955	14.11%
106	WP	GU	GUM	Tamuning	Guam International	P	S	860,519	425,651	102.17%
107	CE	KS	ICT	Wichita	Wichita Dwight D Eisenhower Ntl	P	S	843,261	762,443	10.60%
108	NM	OR	EUG	Eugene	Mahlon Sweet Field	P	S	841,919	781,745	7.70%
109	SO	FL	ECP	Panama City	Northwest Florida Beaches International	P	S	816,640	746,521	9.39%
110	SO	AL	HSV	Huntsville	Huntsville International-Carl T. Jones Field	P	S	724,135	587,572	23.24%
111	SO	VI	STT	Charlotte Amalie	Cyril E. King	P	S	705,177	719,594	-2.00%



Rank	RO	ST	Locid	City	Airport Name	S/L	Hub	CY 23 Enplanements	CY 22 Enplanements	% Change
112	CE	IA	CID	Cedar Rapids	The Eastern Iowa	P	S	691,084	611,010	13.11%
113	SW	TX	MAF	Midland	Midland International Air And Space Port	P	S	684,416	633,964	7.96%
114	WP	HI	ITO	Hilo	Hilo International	P	S	684,175	636,426	7.50%
115	SO	FL	EYW	Key West	Key West International	P	S	675,319	708,807	-4.72%
116	SO	KY	LEX	Lexington	Blue Grass	P	S	665,649	577,424	15.28%
117	SO	NC	ILM	Wilmington	Wilmington International	P	S	655,841	537,591	22.00%
118	GL	SD	FSD	Sioux Falls	Joe Foss Field	P	S	655,350	606,055	8.13%
119	EA	PA	MDT	Harrisburg	Harrisburg International	P	S	654,789	625,698	4.65%
120	NE	VT	BTV	Burlington	Patrick Leahy Burlington International	P	S	649,474	601,441	7.99%
121	NE	NH	MHT	Manchester	Manchester Boston Regional	P	S	645,148	643,641	0.23%
122	EA	NY	ISP	Islip	Long Island MacArthur	P	S	641,404	611,749	4.85%
123	WP	CA	SBA	Santa Barbara	Santa Barbara Municipal	P	S	638,799	610,916	4.56%
124	CE	MO	SGF	Springfield	Springfield-Branson Ntl	P	S	632,699	539,571	17.26%
125	SO	MS	JAN	Jackson	Jackson-Medgar Wiley Evers International	P	S	628,321	598,799	4.93%
126	GL	OH	DAY	Dayton	James M Cox Dayton International	P	S	594,149	559,347	6.22%
127	SO	SC	CAE	Columbia	Columbia Metro	P	S	593,561	504,625	17.62%
128	NM	OR	RDM	Redmond	Roberts Field	P	S	558,804	513,659	8.79%
129	AL	AK	FAI	Fairbanks	Fairbanks International	P	S	548,679	513,160	6.92%
130	SW	TX	LBB	Lubbock	Lubbock Preston Smith International	P	S	543,363	489,710	10.96%
131	SW	TX	HRL	Harlingen	Valley International	P	S	536,510	508,867	5.43%
132	GL	ND	FAR	Fargo	Hector International	P	S	520,776	463,181	12.43%
133	SW	TX	MFE	McAllen	McAllen International	P	S	513,424	452,925	13.36%
134	NM	WY	JAC	Jackson	Jackson Hole	P	S	494,816	399,897	23.74%
135	NE	CT	HVN	New Haven	Tweed/New Haven	P	S	490,242	351,867	39.33%
136	SO	TN	CHA	Chattanooga	Lovell Field	P	S	488,021	431,984	12.97%
137	NM	OR	MFR	Medford	Rogue Valley International - Medford	P	S	478,121	504,085	-5.15%
138	GL	WI	ATW	Appleton	Appleton International	P	S	474,885	416,390	14.05%
			74				S Count			
139	NM	MT	MSO	Missoula	Missoula Montana	P	N	458,416	425,093	7.84%
140	NM	MT	GPI	Kalispell	Glacier Park International	P	N	456,284	420,635	8.48%
141	NM	WA	PSC	Pasco	Tri-Cities	P	N	438,076	390,762	12.11%
142	EA	NJ	ACY	Atlantic City	Atlantic City International	P	N	437,794	459,272	-4.68%
143	NM	MT	BIL	Billings	Billings Logan International	P	N	428,868	386,948	10.83%
144	SO	PR	BQN	Aguadilla	Rafael Hernandez	P	N	425,468	346,166	22.91%
145	AL	AK	JNU	Juneau	Juneau International	P	N	420,478	403,587	4.19%
146	EA	PA	ABE	Allentown	Lehigh Valley International	P	N	419,590	419,772	-0.04%
147	SO	FL	TLH	Tallahassee	Tallahassee International	P	N	416,488	397,029	4.90%
148	NM	UT	PVU	Provo	Provo Municipal	P	N	415,197	211,741	96.09%
149	GL	IN	SBN	South Bend	South Bend International	P	N	411,369	363,078	13.30%
150	SW	TX	AMA	Amarillo	Rick Husband Amarillo International	P	N	397,983	358,360	11.06%

Rank	RO	ST	Locid	City	Airport Name	S/L	Hub	CY 23 Enplanements	CY 22 Enplanements	% Change
151	GL	IN	FWA	Fort Wayne	Fort Wayne International	P	N	392,876	359,800	9.19%
152	SW	LA	BTR	Baton Rouge	Baton Rouge Metro, Ryan Field	P	N	377,665	332,335	13.64%
153	SO	MS	GPT	Gulfport	Gulfport-Biloxi International	P	N	376,976	339,323	11.10%
154	SO	FL	MLB	Melbourne	Melbourne Orlando International	P	N	363,837	339,139	7.28%
155	NE	ME	BGR	Bangor	Bangor International	P	N	357,289	343,528	4.01%
156	SW	TX	CRP	Corpus Christi	Corpus Christi International	P	N	352,215	319,687	10.17%
157	SO	FL	DAB	Daytona Beach	Daytona Beach International	P	N	348,077	280,536	24.08%
158	GL	MI	TVC	Traverse City	Cherry Capital	P	N	347,763	288,850	20.40%
159	EA	VA	ROA	Roanoke	Roanoke/Blacksburg Regional (Woodrum Field)	P	N	345,561	299,858	15.24%
160	GL	SD	RAP	Rapid City	Rapid City Regional	P	N	345,526	331,345	4.28%
161	GL	OH	CAK	Akron	Akron-Canton Regional	P	N	343,980	265,889	29.37%
162	GL	WI	GRB	Green Bay	Green Bay/Austin Straubel International	P	N	330,478	301,377	9.66%
163	EA	NJ	TTN	Trenton	Trenton Mercer	P	N	326,231	328,511	-0.69%
164	WP	CA	SBP	San Luis Obispo	San Luis Obispo County Regional	P	N	324,925	273,690	18.72%
165	WP	CA	STS	Santa Rosa	Charles M Schulz - Sonoma County	P	N	318,196	304,053	4.65%
166	GL	IL	PIA	Peoria	General Downing - Peoria International	P	N	315,482	284,322	10.96%
167	NM	WA	BLI	Bellingham	Bellingham International	P	N	311,234	321,487	-3.19%
168	NM	CO	ASE	Aspen	Aspen-Pitkin County/Sardy Field	P	N	308,988	299,840	3.05%
169	SW	LA	SHV	Shreveport	Shreveport Regional	P	N	308,925	272,981	13.17%
170	EA	VA	CHO	Charlottesville-Albemarle Airport	Charlottesville-Albemarle	P	N	308,461	262,725	17.41%
171	NM	WA	PAE	Everett	Seattle Paine Field International	P	N	306,499	260,724	17.56%
172	GL	MI	FNT	Flint	Bishop International	P	N	281,890	299,782	-5.97%
173	SO	GA	AGS	Augusta	Augusta Regional at Bush Field	P	N	280,517	269,937	3.92%
174	SO	AL	MOB	Mobile	Mobile Regional	P	N	275,342	262,048	5.07%
175	SO	FL	GNV	Gainesville	Gainesville Regional	P	N	273,363	266,349	2.63%
176	GL	IL	MLI	Moline	Quad Cities International	P	N	272,481	269,885	0.96%
177	NM	ID	IDA	Idaho Falls	Idaho Falls Regional	P	N	270,140	308,414	-12.41%
178	WP	CA	MRY	Monterey	Monterey Regional	P	N	259,762	230,669	12.61%
179	GL	ND	BIS	Bismarck	Bismarck Municipal	P	N	258,342	242,918	6.35%
180	NM	CO	MTJ	Montrose	Montrose Regional	P	N	244,266	233,094	4.79%
181	NM	CO	GJT	Grand Junction	Grand Junction Regional	P	N	243,788	221,682	9.97%
182	SO	VI	STX	Christiansted	Henry E Rohlsen	P	N	235,392	204,320	15.21%
183	SW	LA	LFT	Lafayette	Lafayette Regional/Paul Fournet Field	P	N	229,831	226,249	1.58%
184	NM	CO	EGE	Eagle	Eagle County Regional	P	N	226,921	214,998	5.55%
185	SO	TN	TRI	Bristol/Johnson/Kingspor t	Tri-Cities	P	N	220,977	191,882	15.16%
186	WP	MP	GSN	Saipan	Francisco C Ada/Saipan International	P	N	218,374	162,909	34.05%
187	NM	CO	DRO	Durango	Durango-La Plata County	P	N	217,357	183,273	18.60%
188	NM	CO	HDN	Hayden	Yampa Valley	P	N	206,211	197,088	4.63%



Rank	RO	ST	Locid	City	Airport Name	S/L	Hub	CY 23 Enplanements	CY 22 Enplanements	% Change
189	EA	WV	CRW	Charleston	West Virginia International Yeager	P	N	194,896	164,240	18.67%
190	SO	AL	MGM	Montgomery	Montgomery Regional (Dannelly Field)	P	N	181,923	151,755	19.88%
191	NM	MT	GTF	Great Falls	Great Falls International	P	N	177,290	141,802	25.03%
192	SW	LA	AEX	Alexandria	Alexandria International	P	N	176,351	147,059	19.92%
193	SW	TX	BRO	Brownsville	Brownsville/South Padre Island International	P	N	176,056	127,239	38.37%
194	WP	CA	BFL	Bakersfield	Meadows Field	P	N	174,891	141,352	23.73%
195	EA	PA	AVP	Avoca	Wilkes-Barre/Scranton International	P	N	174,044	190,406	-8.59%
196	SO	NC	FAY	Fayetteville	Fayetteville Regional/Grannis Field	P	N	167,572	165,721	1.12%
197	GL	IN	EVV	Evansville	Evansville Regional	P	N	165,186	153,652	7.51%
198	GL	IL	BMI	Bloomington-Normal Airport	Central IL Regional/Bloomington-Normal	P	N	164,672	175,665	-6.26%
199	AL	AK	BET	Bethel	Bethel	P	N	153,548	142,256	7.94%
200	SW	TX	LRD	Laredo	Laredo International	P	N	151,114	139,396	8.41%
201	GL	OH	LCK	Columbus	Rickenbacker International	P	N	149,363	147,957	0.95%
202	AL	AK	KTN	Ketchikan	Ketchikan International	P	N	148,645	143,786	3.38%
203	GL	IL	BLV	Belleville	Scott AFB/Midamerica St Louis	P	N	147,421	162,819	-9.46%
204	GL	ND	MOT	Minot	Minot International	P	N	146,657	139,351	5.24%
206	SO	PR	PSE	Ponce	Mercedita	P	N	142,076	109,691	29.52%
207	SW	NM	SAF	Santa Fe	Santa Fe Regional	P	N	140,245	123,452	13.60%
208	EA	PA	UNV	State College	State College Regional	P	N	138,820	112,474	23.42%
209	NE	MA	ACK	Nantucket	Nantucket Memorial	P	N	137,640	140,621	-2.12%
210	NM	UT	SGU	St. George	St George Regional	P	N	136,411	128,453	6.20%
211	SO	NC	OAJ	Jacksonville	Albert J Ellis	P	N	133,839	138,235	-3.18%
212	EA	DE	ILG	Wilmington	New Castle	P	N	133,339	5,006	2563.58%
213	CE	NE	LNK	Lincoln	Lincoln	P	N	131,877	93,953	40.36%
214	EA	NY	SWF	Newburgh	New York Stewart International	P	N	129,602	154,070	-15.88%
215	GL	MN	DLH	Duluth	Duluth International	P	N	128,109	118,242	8.34%
216	GL	IL	RFD	Rockford	Chicago/Rockford International	P	N	120,494	121,544	-0.86%
217	SO	NC	JQF	Concord	Concord-Padgett Regional	P	N	119,054	124,276	-4.20%
218	WP	CA	ACV	Arcata	California Redwood Coast-Humboldt County	P	N	117,972	118,924	-0.80%
219	SW	TX	GRK	Killeen	Robert Gray AAF	P	N	113,701	126,160	-9.88%
220	NM	ID	SUN	Hailey	Friedman Memorial	P	N	109,343	100,586	8.71%
221	GL	MI	LAN	Clinton (Township of)	Capital Region International	P	N	106,939	83,426	28.18%
222	NE	MA	ORH	Worcester	Worcester Regional	P	N	104,747	80,089	30.79%
223	SO	SC	HXD	Hilton Head Island	Hilton Head	P	N	103,963	114,475	-9.18%
224	CE	MO	COU	Columbia	Columbia Regional	P	N	97,775	81,643	19.76%
225	SW	LA	MLU	Monroe	Monroe Regional	P	N	96,964	89,347	8.53%
226	AL	AK	SIT	Sitka	Sitka Rocky Gutierrez	P	N	96,214	94,648	1.65%
227	WP	AZ	NYL	Yuma	Yuma MCAS/Yuma International	P	N	94,364	121,864	-22.57%

Rank	RO	ST	Locid	City	Airport Name	S/L	Hub	CY 23 Enplanements	CY 22 Enplanements	% Change
228	GL	ND	GFK	Grand Forks	Grand Forks International	P	N	93,877	89,819	4.52%
229	GL	MI	MBS	Saginaw	MBS International	P	N	93,545	70,172	33.31%
230	GL	MN	RST	Rochester	Rochester International	P	N	93,487	84,504	10.63%
231	EA	WV	HTS	Huntington	Tri-State/Milton J Ferguson Field	P	N	88,888	91,091	-2.42%
232	NM	MT	HLN	Helena	Helena Regional	P	N	88,319	82,191	7.46%
233	WP	CA	RDD	Redding	Redding Regional	P	N	87,670	98,725	-11.20%
234	GL	MI	AZO	Kalamazoo	Kalamazoo/Battle Creek International	P	N	87,617	72,551	20.77%
235	NM	WY	CPR	Casper	Casper/Natrona County International	P	N	87,171	72,645	20.00%
236	WP	HI	MKK	Kaunakakai	Molokai	P	N	85,341	98,223	-13.12%
237	AL	AK	ADQ	Kodiak	Kodiak	P	N	85,183	82,913	2.74%
238	EA	NY	ELM	Elmira	Elmira/Corning Regional	P	N	85,034	81,796	3.96%
239	GL	WI	CWA	Mosinee	Central Wisconsin	P	N	84,775	78,189	8.42%
240	NE	MA	MVY	Vineyard Haven	Martha's Vineyard	P	N	83,603	70,098	19.27%
241	SW	LA	LCH	Lake Charles	Lake Charles Regional	P	N	82,417	61,288	34.47%
242	AL	AK	SCC	Deadhorse	Deadhorse	P	N	82,296	73,334	12.22%
243	GL	ND	XWA	Williston	Williston Basin International	P	N	82,258	66,287	24.09%
244	SW	TX	ABI	Abilene	Abilene Regional	P	N	79,831	70,419	13.37%
245	EA	PA	LBE	Latrobe	Arnold Palmer Regional	P	N	76,923	124,422	-38.18%
246	EA	VA	LYH	Timberlake	Lynchburg Regional/Preston Glenn Field	P	N	74,730	76,642	-2.49%
247	WP	AZ	FLG	- Flagstaff	Flagstaff Pulliam	P	N	73,992	92,535	-20.04%
249	EA	NY	PBG	Plattsburgh	Plattsburgh International	P	N	72,150	74,668	-3.37%
250	GL	OH	TOL	Toledo	Eugene F Kranz Toledo Express	P	N	70,339	85,451	-17.68%
251	GL	IL	CMI	Savoy	University of Illinois/Willard	P	N	70,184	64,715	8.45%
252	EA	VA	PHF	Newport News	Newport News/Williamsburg International	P	N	69,529	80,228	-13.34%
253	WP	CA	SCK	Stockton	Stockton Metro	P	N	67,688	74,529	-9.18%
254	AL	AK	ENA	Kenai	Kenai Municipal	P	N	67,062	75,180	-10.80%
255	AL	AK	OME	Nome	Nome	P	N	66,883	62,785	6.53%
256	SO	GA	CSG	Columbus	Columbus	P	N	65,701	84,387	-22.14%
257	CE	NE	GRI	Grand Island	Central Nebraska Regional	P	N	65,092	65,795	-1.07%
258	NM	WA	PUW	Pullman	Pullman/Moscow Regional	P	N	63,835	75,027	-14.92%
259	EA	NY	ITH	Ithaca	Ithaca Tompkins International	P	N	60,848	56,509	7.68%
260	AL	AK	OTZ	Kotzebue	Ralph Wien Memorial	P	N	60,124	56,851	5.76%
261	SW	TX	CLL	College Station	Easterwood Field	P	N	60,072	54,542	10.14%
262	SO	NC	EWN	New Bern	Coastal Carolina Regional	P	N	59,152	64,011	-7.59%
263	SW	AR	FSM	Fort Smith	Fort Smith Regional	P	N	58,615	59,688	-1.80%
264	NE	NH	PSM	Portsmouth	Portsmouth International at Pease	P	N	57,422	64,314	-10.72%
265	EA	NY	IAG	Niagara Falls	Niagara Falls International	P	N	52,616	58,741	-10.43%
266	EA	MD	SBY	Salisbury	Salisbury-Ocean City Wicomico Regional	P	N	52,236	47,275	10.49%
267	SW	TX	SJT	San Angelo	San Angelo Regional/Mathis Field	P	N	51,865	54,347	-4.57%



Rank	RO	ST	Locid	City	Airport Name	S/L	Hub	CY 23 Enplanements	CY 22 Enplanements	% Change
268	SW	TX	ACT	Waco	Waco Regional	P	N	51,864	54,899	-5.53%
269	CE	KS	MHK	Manhattan	Manhattan Regional	P	N	51,412	79,050	-34.96%
270	GL	IL	SPI	Springfield	Abraham Lincoln Capital	P	N	50,513	72,466	-30.29%
271	SW	TX	TYR	Tyler	Tyler Pounds Regional	P	N	50,155	40,548	23.69%
272	WP	NV	BVU	Boulder City	Boulder City Municipal	P	N	49,841	63,243	-21.19%
273	NM	CO	GUC	Gunnison	Gunnison-Crested Butte Regional	P	N	49,588	52,040	-4.71%
274	EA	PA	ERI	Erie	Erie International/Tom Ridge Field	P	N	47,206	61,860	-23.69%
275	SW	OK	LAW	Lawton	Lawton-Fort Sill Regional	P	N	45,716	41,890	9.13%
276	SW	NM	ROW	Roswell	Roswell Air Center	P	N	44,943	55,563	-19.11%
277	GL	WI	LSE	La Crosse	La Crosse Regional	P	N	43,667	65,268	-33.10%
278	WP	AS	PPG	Pago Pago	Pago Pago International	P	N	43,467	21,690	100.40%
279	EA	WV	CKB	Clarksburg	North Central West Virginia	P	N	42,736	46,508	-8.11%
280	GL	MI	SAW	Gwinn	Marquette/Sawyer Regional	P	N	42,660	42,664	-0.01%
281	SO	MS	GTR	Columbus	Golden Triangle Regional	P	N	42,509	42,896	-0.90%
282	SO	FL	VRB	Vero Beach	Vero Beach Regional	P	N	42,323	1,231	3338.10%
283	SO	GA	VLD	Valdosta	Valdosta Regional	P	N	42,160	38,517	9.46%
284	SW	AR	TXK	Texarkana	Texarkana Regional-Webb Field	P	N	41,951	35,590	17.87%
285	AL	AK	BRW	Barrow	Wiley Post-Will Rogers Memorial	P	N	41,579	37,530	10.79%
286	AL	AK	AKN	King Salmon	King Salmon	P	N	38,021	37,874	0.39%
288	NM	ID	LWS	Lewiston	Lewiston/Nez Perce County	P	N	36,761	41,720	-11.89%
289	EA	NY	BGM	Binghamton	Greater Binghamton/Edwin A Link Field	P	N	36,643	13,328	174.93%
290	SO	AL	DHN	Dothan	Dothan Regional	P	N	35,658	38,517	-7.42%
291	SW	OK	SWO	Stillwater	Stillwater Regional	P	N	35,358	28,867	22.49%
292	AL	AK	DLG	Dillingham	Dillingham	P	N	34,815	33,151	5.02%
293	SO	NC	PGV	Greenville	Pitt-Greenville	P	N	34,792	32,448	7.22%
294	NM	WY	COD	Cody	Yellowstone Regional	P	N	34,711	37,729	-8.00%
295	AL	AK	HOM	Homer	Homer	P	N	34,682	35,407	-2.05%
296	WP	HI	LNK	Lanai City	Lanai	P	N	34,430	37,741	-8.77%
297	WP	AZ	1G4	Peach Springs	Grand Canyon West	P	N	33,982	32,726	3.84%
298	SO	GA	BQK	Brunswick	Brunswick Golden Isles	P	N	33,832	34,373	-1.57%
299	SW	TX	GGG	Longview	East Texas Regional	P	N	32,613	25,982	25.52%
300	EA	MD	HGR	Hagerstown	Hagerstown Regional/Richard A Henson Field	P	N	32,331	32,197	0.42%
301	SW	TX	BPT	Beaumont	Jack Brooks Regional	P	N	32,150	24,882	29.21%
303	AL	AK	MRI	Anchorage	Merrill Field	P	N	30,269	31,905	-5.13%
304	SO	GA	ABY	Albany	Southwest Georgia Regional	P	N	30,025	35,023	-14.27%
305	SO	PR	VQS	Vieques	Antonio Rivera Rodriguez	P	N	28,961	39,529	-26.73%
306	CE	KS	GCK	Garden City	Garden City Regional	P	N	27,856	29,628	-5.98%
307	NM	WA	EAT	East Wenatchee	Pangborn Memorial	P	N	27,655	34,721	-20.35%

Rank	RO	ST	Locid	City	Airport Name	S/L	Hub	CY 23 Enplanements	CY 22 Enplanements	% Change
308	NM	WA	BFI	Seattle	Boeing Field/King County International	P	N	27,393	21,717	26.14%
309	WP	CA	SBD	San Bernardino	San Bernardino International	P	N	27,339	10,142	169.56%
310	CE	IA	SUX	Sioux City	Sioux Gateway/Brig General Bud Day Field	P	N	27,099	25,874	4.73%
311	NM	WY	GCC	Gillette	Northeast Wyoming Regional	P	N	26,784	24,144	10.93%
312	NM	WY	SHR	Sheridan	Sheridan County	P	N	26,641	25,104	6.12%
313	NM	WA	ALW	Walla Walla	Walla Walla Regional	P	N	26,465	33,821	-21.75%
314	WP	MP	TNI	Tinian (Municipality)	Francisco Manglona Borja/Tinian International	P	N	26,143	26,926	-2.91%
315	GL	WI	EAU	Eau Claire	Chippewa Valley Regional	P	N	25,856	17,346	49.06%
316	SW	TX	SPS	Wichita Falls	Sheppard AFB/Wichita Falls Municipal	P	N	25,075	27,720	-9.54%
317	AL	AK	PSG	Petersburg	Petersburg James A Johnson	P	N	24,921	23,955	4.03%
318	GL	MN	BJI	Bemidji	Bemidji Regional	P	N	24,762	26,478	-6.48%
319	WP	AZ	PRC	Prescott	Prescott Regional - Ernest A Love Field	P	N	24,583	24,100	2.00%
320	GL	ND	DIK	Dickinson	Dickinson/Theodore Roosevelt Regional	P	N	24,057	21,606	11.34%
321	NM	WA	YKM	Yakima	Yakima Air Trml/McAllister Field	P	N	24,044	36,383	-33.91%
322	GL	MI	CMX	Hancock	Houghton County Memorial	P	N	23,355	22,672	3.01%
324	SO	SC	FLO	Florence	Florence Regional	P	N	22,732	29,064	-21.79%
325	GL	MI	PLN	Pellston	Pellston Regional/Emmet County	P	N	22,261	25,408	-12.39%
326	SW	NM	HOB	Hobbs	Lea County Regional	P	N	22,187	17,843	24.35%
327	GL	MI	CIU	Sault Ste. Marie	Chippewa County International	P	N	22,166	22,147	0.09%
328	GL	SD	ABR	Aberdeen	Aberdeen Regional	P	N	22,112	21,776	1.54%
329	EA	NY	ART	Watertown	Watertown International	P	N	21,522	20,379	5.61%
330	GL	WI	RHI	Rhineland	Rhineland/Oneida County	P	N	20,986	20,922	0.31%
331	NM	ID	TWF	Twin Falls	Joslin Field/Magic Valley Regional	P	N	19,871	16,548	20.08%
332	SO	PR	RVR	Ceiba	Jose Aponte De La Torre	P	N	19,786	28,966	-31.69%
333	NM	OR	OTH	North Bend	Southwest Oregon Regional	P	N	19,590	17,061	14.82%
334	GL	MN	STC	St. Cloud	St. Cloud Regional	P	N	19,554	18,347	6.58%
337	NM	UT	CNY	Moab	Canyonlands Regional	P	N	19,296	18,841	2.41%
338	NE	ME	PQI	Presque Isle	Presque Isle International	P	N	19,269	15,428	24.90%
339	AL	AK	DUT	Unalaska	Unalaska	P	N	19,201	21,034	-8.71%
340	SO	PR	CPX	Culebra	Benjamin Rivera Noriega	P	N	18,922	21,788	-13.15%
341	AL	AK	CDV	Cordova	Merle K (Mudhole) Smith	P	N	18,244	16,844	8.31%
342	NM	WY	LAR	Laramie	Laramie Regional	P	N	18,094	17,982	0.62%
343	GL	MI	IMT	Iron Mountain	Ford	P	N	17,961	20,727	-13.34%
344	NM	ID	PIH	Arbon Valley	Pocatello Regional	P	N	17,504	11,961	46.34%
345	NE	MA	HYA	Hyannis	Cape Cod Gateway	P	N	17,462	15,562	12.21%
348	AL	AK	AKW	Klawock	Klawock	P	N	16,733	16,167	3.50%
350	CE	IA	DBQ	Dubuque	Dubuque Regional	P	N	16,474	15,673	5.11%
351	GL	MN	BRD	Brainerd	Brainerd Lakes Regional	P	N	16,218	20,311	-20.15%



Rank	RO	ST	Locid	City	Airport Name	S/L	Hub	CY 23 Enplanements	CY 22 Enplanements	% Change
352	NM	WY	RKS	Rock Springs	Southwest Wyoming Regional	P	N	16,158	15,192	6.36%
353	NM	MT	BTM	Butte	Bert Mooney	P	N	16,027	18,194	-11.91%
354	WP	AZ	PGA	Page	Page Municipal	P	N	15,951	20,403	-21.82%
355	GL	SD	PIR	Pierre	Pierre Regional	P	N	15,877	16,441	-3.43%
356	SO	GA	MCN	Macon	Middle Georgia Regional	P	N	15,832	14,881	6.39%
357	GL	MI	ESC	Escanaba	Delta County	P	N	15,659	20,339	-23.01%
358	GL	SD	ATY	Watertown	Watertown Regional	P	N	15,532	15,042	3.26%
359	SO	MS	MEI	Meridian	Key Field	P	N	15,513	13,999	10.82%
360	NM	WY	RIW	Riverton	Central Wyoming Regional	P	N	15,350	12,972	18.33%
361	NE	RI	BID	Block Island	Block Island State	P	N	15,194	14,366	5.76%
363	CE	KS	SLN	Salina	Salina Regional	P	N	15,080	20,252	-25.54%
364	CE	NE	EAR	Kearney	Kearney Regional	P	N	14,684	22,283	-34.10%
365	CE	MO	JLN	Joplin	Joplin Regional	P	N	14,420	20,786	-30.63%
366	WP	CA	SMX	Santa Maria	Santa Maria Public/Capt G Allan Hancock Field	P	N	14,409	15,911	-9.44%
367	CE	NE	LBF	North Platte	North Platte Regional/Lee Bird Field	P	N	14,371	12,306	16.78%
368	AL	AK	WRG	Wrangell	Wrangell	P	N	14,323	13,337	7.39%
369	EA	PA	JST	Johnstown	John Murtha Johnstown/Cambria County	P	N	14,253	7,764	83.58%
370	NM	UT	VEL	Vernal	Vernal Regional	P	N	13,952	11,071	26.02%
372	SW	NM	CVN	Clovis	Clovis Regional	P	N	13,623	13,028	4.57%
373	SO	MS	TUP	Tupelo	Tupelo Regional	P	N	13,526	15,590	-13.24%
374	SO	PR	SIG	San Juan	Fernando Luis Ribas Dominicki	P	N	13,447	16,600	-18.99%
376	GL	MN	INL	International Falls	Falls International/Einarson Field	P	N	13,277	12,260	8.30%
377	NM	WY	CYS	Cheyenne	Cheyenne Regional/Jerry Olson Field	P	N	13,132	19,764	-33.56%
378	SO	KY	PAH	Paducah	Barkley Regional	P	N	13,057	14,677	-11.04%
379	SO	MS	PIB	Moselle	Hattiesburg/Laurel Regional	P	N	13,002	13,125	-0.94%
380	CE	IA	ALO	Waterloo	Waterloo Regional	P	N	12,879	16,328	-21.12%
381	NM	WA	FHR	Friday Harbor	Friday Harbor	P	N	12,709	10,883	16.78%
383	NE	RI	WST	Westerly	Westerly State	P	N	12,328	14,435	-14.60%
384	AL	AK	YAK	Yakutat	Yakutat	P	N	12,105	12,139	-0.28%
385	CE	NE	BFF	Scottsbluff	Western Nebraska Regional/Wm B Heilig Field/Scottsbluff	P	N	12,052	12,548	-3.95%
387	CE	MO	TBN	Fort Leonard Wood (U.S. Army)	Waynesville-St Robert Regional Forney Field	P	N	11,853	7,988	48.39%
388	GL	MN	HIB	Hibbing	Range Regional	P	N	11,775	13,460	-12.52%
389	NM	UT	CDC	Cedar City	Cedar City Regional	P	N	11,768	12,245	-3.90%
390	AL	AK	GAL	Galena	Edward G Pitka Sr	P	N	11,758	10,381	13.26%
391	NM	CO	ALS	Alamosa	San Luis Valley Regional/Bergman Field	P	N	11,319	10,047	12.66%
392	SW	TX	VCT	Victoria	Victoria Regional	P	N	11,293	7,505	50.47%
393	GL	IL	DEC	Decatur	Decatur	P	N	11,216	9,871	13.63%
394	WP	MP	GRO	Northern Islands (Municipality)	Benjamin Taisacan Manglona International	P	N	11,136	11,307	-1.51%

Rank	RO	ST	Locid	City	Airport Name	S/L	Hub	CY 23 Enplanements	CY 22 Enplanements	% Change
395	SO	AL	BFM	Mobile	Mobile International	P	N	10,830	1,421	662.14%
396	NM	CO	TEX	Telluride	Telluride Regional	P	N	10,826	11,650	-7.07%
397	SO	KY	OWB	Owensboro	Owensboro/Daviess County Regional	P	N	10,822	15,636	-30.79%
398	NE	NH	LEB	Lebanon	Lebanon Municipal	P	N	10,809	9,855	9.68%
399	WP	NV	EKO	Elko	Elko Regional	P	N	10,723	8,459	26.76%
400	GL	ND	JMS	Jamestown	Jamestown Regional	P	N	10,590	11,299	-6.27%
401	SO	FL	FXE	Fort Lauderdale	Fort Lauderdale Exec	P	N	10,559	9,902	6.64%
402	GL	IL	MWA	Marion	Veterans Airport of Southern Illinois	P	N	10,558	10,399	1.53%
404	NE	ME	BHB	Bar Harbor	Hancock County/Bar Harbor	P	N	10,470	8,396	24.70%
405	CE	KS	HYS	Hays	Hays Regional	P	N	10,038	10,089	-0.51%
406	WP	CA	BIH	Bishop	Bishop	P	N	10,007	10,754	-6.95%
			<b>252</b>				<b>N Count</b>			
408	AL	AK	ENM	Emmonak	Emmonak	CS	None	9,760	8,971	8.80%
409	AL	AK	GST	Gustavus	Gustavus	CS	None	9,584	10,179	-5.85%
411	NM	CO	CEZ	Cortez	Cortez Municipal	CS	None	8,960	6,998	28.04%
413	NM	MT	WYS	West Yellowstone	Yellowstone	CS	None	8,750	7,346	19.11%
417	EA	WV	LWB	Lewisburg	Greenbrier Valley	CS	None	8,328	10,048	-17.12%
418	AL	AK	UNK	Unalakleet	Unalakleet	CS	None	8,312	8,137	2.15%
419	CE	KS	LBL	Liberal	Liberal Mid-America Regional	CS	None	8,267	8,019	3.09%
420	SO	PR	MAZ	Mayaguez	Eugenio Maria De Hostos	CS	None	8,224	7,059	16.50%
421	GL	MN	TVF	Thief River Falls	Thief River Falls Regional	CS	None	8,143	8,648	-5.84%
422	NM	WA	ORS	Eastsound	Orcas Island	CS	None	8,089	7,365	9.83%
423	GL	ND	DVL	Devils Lake	Devils Lake Regional	CS	None	8,051	7,349	9.55%
424	GL	MI	APN	Alpena	Alpena County Regional	CS	None	8,034	13,046	-38.42%
425	NM	MT	SDY	Sidney	Sidney-Richland Regional	CS	None	8,020	6,535	22.72%
426	EA	VA	SHD	Weyers Cave	Shenandoah Valley Regional	CS	None	7,990	10,400	-23.17%
427	WP	CA	CEC	Crescent City	Jack McNamara Field	CS	None	7,879	8,218	-4.13%
428	NE	MA	PVC	Provincetown	Provincetown Municipal	CS	None	7,746	7,417	4.44%
430	CE	MO	CGI	Cape Girardeau	Cape Girardeau Regional	CS	None	7,563	8,713	-13.20%
431	SO	MS	GLH	Greenville	Greenville Mid-Delta	CS	None	7,521	10,452	-28.04%
432	WP	CA	IPL	Imperial	Imperial County	CS	None	7,100	9,180	-22.66%
434	GL	MI	IWD	Ironwood	Gogebic/Iron County	CS	None	7,042	7,027	0.21%
436	NE	ME	RKD	Rockland	Knox County Regional	CS	None	7,018	11,200	-37.34%
437	NM	OR	SLE	Salem	McNary Field	CS	None	6,993	2	349550.00%



Rank	RO	ST	Locid	City	Airport Name	S/L	Hub	CY 23 Enplanements	CY 22 Enplanements	% Change
438	SW	NM	SVC	Silver City	Grant County	CS	None	6,973	6,550	6.46%
439	EA	WV	MGW	Morgantown	Morgantown Municipal/Walter L Bill Hart Field	CS	None	6,842	7,272	-5.91%
440	CE	KS	DDC	Dodge City	Dodge City Regional	CS	None	6,432	6,464	-0.50%
442	AL	AK	HNS	Haines	Haines	CS	None	6,306	7,253	-13.06%
443	EA	PA	LNS	Lititz	Lancaster	CS	None	6,260	6,274	-0.22%
444	CE	IA	FOD	Fort Dodge	Fort Dodge Regional	CS	None	6,195	5,531	12.01%
445	GL	MI	MBL	Manistee	Manistee County/Blacker	CS	None	6,039	5,210	15.91%
446	SO	AL	MSL	Muscle Shoals	Northwest Alabama Regional	CS	None	5,907	7,049	-16.20%
447	EA	NY	OGS	Ogdensburg	Ogdensburg International	CS	None	5,801	7,841	-26.02%
448	AL	AK	HNH	Hoonah	Hoonah	CS	None	5,790	5,950	-2.69%
449	CE	IA	MCW	Clear Lake	Mason City Municipal	CS	None	5,780	6,504	-11.13%
450	AL	AK	ILI	Iliamna	Iliamna	CS	None	5,749	4,280	34.32%
451	AL	AK	CXF	Coldfoot	Coldfoot	CS	None	5,634	5,212	8.10%
452	EA	PA	DUJ	Brookville	Dubois Regional	CS	None	5,568	6,200	-10.19%
454	NM	OR	PDT	Pendleton	Eastern Oregon Regional at Pendleton	CS	None	5,544	5,079	9.16%
455	AL	AK	FYU	Fort Yukon	Fort Yukon	CS	None	5,506	4,728	16.46%
456	NE	ME	AUG	Augusta	Augusta State	CS	None	5,354	5,804	-7.75%
457	SW	TX	DRT	Del Rio	Del Rio International	CS	None	5,320	26,641	-80.03%
460	NE	VT	RUT	Rutland	Rutland/Southern Vermont Regional	CS	None	5,228	5,540	-5.63%
461	AL	AK	AQH	Quinhagak	Quinhagak	CS	None	5,119	4,996	2.46%
462	WP	CA	HHR	Hawthorne	Jack Northrop Field/Hawthorne Municipal	CS	None	5,100	5,001	1.98%
464	SW	NM	CNM	Carlsbad	Cavern City Air Terminal	CS	None	5,028	5,311	-5.33%
465	EA	NY	MSS	Massena	Massena International-Richards Field	CS	None	4,958	4,721	5.02%
466	AL	AK	SGY	Skagway	Skagway	CS	None	4,953	5,293	-6.42%
467	EA	NY	SLK	Saranac Lake	Adirondack Regional	CS	None	4,944	5,181	-4.57%
468	AL	AK	KSM	Saint Mary's	St Mary's	CS	None	4,912	4,680	4.96%
469	EA	WV	BKW	Beckley	Raleigh County Memorial	CS	None	4,882	5,004	-2.44%
471	GL	IL	UIN	Quincy	Quincy Regional-Baldwin Field	CS	None	4,710	4,774	-1.34%
472	AL	AK	ANI	Aniak	Aniak	CS	None	4,707	4,971	-5.31%
473	AL	AK	VAK	Chevak	Chevak	CS	None	4,704	4,810	-2.20%
475	SW	AR	HRO	Harrison	Boone County	CS	None	4,565	5,780	-21.02%

Rank	RO	ST	Locid	City	Airport Name	S/L	Hub	CY 23 Enplanements	CY 22 Enplanements	% Change
476	GL	MI	MKG	Muskegon	Muskegon County	CS	None	4,521	11,292	-59.96%
477	AL	AK	IHK	Kipnuk	Kipnuk	CS	None	4,466	4,221	5.80%
478	EA	WV	PKB	Parkersburg	Mid-Ohio Valley Regional	CS	None	4,391	5,032	-12.74%
479	CE	NE	AIA	Alliance	Alliance Municipal	CS	None	4,328	4,156	4.14%
480	WP	CA	CRQ	Carlsbad	McClellan-Palomar	CS	None	4,328	3,715	16.50%
481	AL	AK	HPB	Hooper Bay	Hooper Bay	CS	None	4,314	4,699	-8.19%
482	CE	MO	IRK	Kirksville	Kirksville Regional	CS	None	4,281	4,667	-8.27%
483	AL	AK	VDZ	Valdez	Valdez Pioneer Field	CS	None	4,235	5,557	-23.79%
487	NM	WA	W33	Friday Harbor	Friday Harbor	CS	None	4,080	5,562	-26.65%
488	CE	IA	BRL	Burlington	Southeast Iowa Regional	CS	None	4,076	3,605	13.07%
489	AL	AK	PHO	Point Hope	Point Hope	CS	None	4,052	3,572	13.44%
490	AL	AK	WLK	Selawik	Selawik	CS	None	3,974	3,522	12.83%
491	WP	CA	MMH	Mammoth Lakes	Mammoth Yosemite	CS	None	3,966	4,056	-2.22%
492	EA	PA	BFD	Bradford	Bradford Regional	CS	None	3,897	4,509	-13.57%
493	WP	CA	MCE	Merced	Merced Yosemite Regional	CS	None	3,798	3,431	10.70%
494	WP	AZ	SOW	Show Low	Show Low Regional	CS	None	3,729	4,535	-17.77%
495	SW	AR	HOT	Hot Springs	Memorial Field	CS	None	3,727	4,975	-25.09%
496	AL	AK	WTK	Noatak	Noatak	CS	None	3,698	3,402	8.70%
500	AL	AK	BVK	Buckland	Buckland	CS	None	3,615	3,362	7.53%
501	AL	AK	AFE	Kake	Kake	CS	None	3,605	0	0.00%
502	WP	HI	MUE	Kamuela	Waimea-Kohala	CS	None	3,598	4,352	-17.33%
503	AL	AK	SCM	Scammon Bay	Scammon Bay	CS	None	3,583	3,550	0.93%
504	AL	AK	SHH	Shishmaref	Shishmaref	CS	None	3,477	3,552	-2.11%
505	AL	AK	D76	Noorvik	Robert /Bob/ Curtis Memorial	CS	None	3,410	3,096	10.14%
506	AL	AK	Z09	Kasigluk	Kasigluk	CS	None	3,386	3,182	6.41%
507	AL	AK	SOV	Seldovia	Seldovia	CS	None	3,381	3,738	-9.55%
508	NM	CO	PUB	Pueblo	Pueblo Memorial	CS	None	3,358	7,984	-57.94%
510	AL	AK	SVA	Savoonga	Savoonga	CS	None	3,310	3,085	7.29%
511	AL	AK	HLA	Huslia	Huslia	CS	None	3,304	2,849	15.97%
512	SO	TN	MKL	Jackson	McKellar-Sipes Regional	CS	None	3,264	3,398	-3.94%
513	EA	PA	AOO	Altoona	Altoona/Blair County	CS	None	3,231	4,442	-27.26%

Rank	RO	ST	Locid	City	Airport Name	S/L	Hub	CY 23 Enplanements	CY 22 Enplanements	% Change
514	AL	AK	OOK	Toksook Bay	Toksook Bay	CS	None	3,197	3,279	-2.50%
515	AL	AK	0AK	Pilot Station	Pilot Station	CS	None	3,195	2,724	17.29%
516	AL	AK	A61	Tuntutuliak	Tuntutuliak	CS	None	3,161	2,788	13.38%
517	NM	MT	OLF	Wolf Point	L M Clayton	CS	None	3,153	3,207	-1.68%
518	SW	AR	ELD	El Dorado	South Arkansas Regional at Goodwin Field	CS	None	3,144	3,923	-19.86%
519	AL	AK	GAM	Gambell	Gambell	CS	None	3,142	2,842	10.56%
521	AL	AK	AWI	Wainwright	Wainwright	CS	None	3,095	2,860	8.22%
522	WP	HI	LUP	Kalaupapa	Kalaupapa	CS	None	3,085	6,362	-51.51%
523	AL	AK	MOU	Mountain Village	Mountain Village	CS	None	3,048	2,167	40.66%
524	AL	AK	Z13	Akiachak	Akiachak	CS	None	3,033	1,886	60.82%
525	AL	AK	CDB	Cold Bay	Cold Bay	CS	None	3,023	3,240	-6.70%
527	AL	AK	KVL	Kivalina	Kivalina	CS	None	3,003	2,896	3.69%
528	AL	AK	AKP	Anaktuvuk Pass	Anaktuvuk Pass	CS	None	3,000	2,597	15.52%
529	AL	AK	TOG	Togiak	Togiak	CS	None	2,997	2,727	9.90%
531	NM	MT	HVR	Havre	Havre City-County	CS	None	2,964	2,863	3.53%
533	AL	AK	CFK	Chefornak	Chefornak	CS	None	2,913	2,893	0.69%
534	NM	MT	GGW	Glasgow	Wokal Field/Glasgow-Valley County	CS	None	2,892	2,982	-3.02%
535	AL	AK	16A	Nunapitchuk	Nunapitchuk	CS	None	2,845	2,399	18.59%
536	AL	AK	SDP	Sand Point	Sand Point	CS	None	2,818	2,552	10.42%
537	AL	AK	EEK	Eek	Eek	CS	None	2,812	2,616	7.49%
539	AL	AK	2A3	Larsen Bay	Larsen Bay	CS	None	2,760	2,895	-4.66%
540	AL	AK	IAN	Kiana	Bob Baker Memorial	CS	None	2,759	2,200	25.41%
541	AL	AK	DUY	Kongiganak	Kongiganak	CS	None	2,725	2,680	1.68%
543	AL	AK	KWT	Kwethluk	Kwethluk	CS	None	2,614	1,767	47.93%
544	CE	MO	BBG	Branson	Branson	CS	None	2,596	6,204	-58.16%
545	AL	AK	MCG	McGrath	McGrath	CS	None	2,575	2,700	-4.63%
546	AL	AK	2A9	Kotlik	Kotlik	CS	None	2,557	2,329	9.79%
548	AL	AK	MDM	Marshall	Marshall Don Hunter Sr	CS	None	2,514	1,772	41.87%
			112	Nonprimary Commercial Service						
			390	Total Commercial Service						



# CITY OF BILLINGS – AVIATION & TRANSIT DEPARTMENT

## MET TRANSIT DIVISION FY25 RIDERSHIP REPORT



# JULY 2024



	Monthly						Year-To-Date (FY 2025)		
	Service Days	July 2023	Service Days	July 2024	Percent Change	Adjust For Service Days	July 23- July 23-	July 24- July 24-	Percent Change
<b><u>Fixed Route</u></b>									
Weekdays	20	18,064	22	34,394	90.4%	73.1%	18,064	34,394	90.4%
Saturdays	5	2,099	4	2,602	24.0%	55.0%	2,099	2,602	24.0%
Total		<b>20,163</b>		<b>36,996</b>	83.5%		20,163	36,996	83.5%
Lift Usage		600		749	24.8%		600	749	24.8%
Bike Rack Usage		735		1,699	131.2%		735	1,699	131.2%
<b><u>Paratransit</u></b>									
Weekdays	20	3,201	22	3,348	4.6%	-4.9%	3,201	3,348	4.6%
Saturdays	5	76	4	61	-19.7%	0.3%	76	61	-19.7%
Total		<b>3,277</b>		<b>3,409</b>	4.0%		3,277	3,409	4.0%
Wheelchair Users		956		974	1.9%		956	974	1.9%
Demand Response		2,237		3,409	52.4%		2,237	3,409	52.4%
Contract Rides*		1,040		0	-100.0%		1,040	0	-100.0%
<b>Grand Total Ridership</b>		<b>23,440</b>		<b>40,405</b>	<b>72.38%</b>		<b>23,440</b>	<b>40,405</b>	

\*Ended DD Contract with State of Montana on 6/30/2024

## 2024 COUNCIL MEETINGS SCHEDULE

(Year to date listing appears at the end of this schedule)

### August 5, 2024 – WORK SESSION

1. Billings Association of Realtors (Steve Simonson)
2. Proposed City Subdivision Regulation Amendments-Part II (Dave Green) & CPTED (Nate West)
3. Unified Planning Work Program (UPWP) (Lora Mattox/Anna Vickers)
4. Council Discussion

### August 12, 2024 - REGULAR BUSINESS

#### CONSENT:

1. BID AWARD: W.O. 22-44 Zone 1 Water Storage Improvements, Schedule 2
2. BID AWARD: Water Treatment Chlorine
3. BID AWARD: Castlerock Restroom Renovation
4. Amndmnt 2 - W.O. 23-12: Zone 4 Pump Station and Waterline Improvements
5. Change Order No. 3 - New City Hall CMAR Contract
6. Contract to Replace Outdated 911 Phone and Radio Recorder
7. Purchase 3 Police Patrol Utility Vehicles and 1 Community Service Officer Pickup
8. Donation from Partners for Parks to Parks for High Sierra Dog Park Shelter
9. Donation from NorthWestern Energy to Parks for Poly Vista Park trees
10. Donation from Faith E. Church to Parks for Centennial Park trees
11. Donation from the Yellowstone County DUI Task Force
12. Unified Planning Work Program (UPWP)
13. Park 1 Condominium Declaration and Association Bylaws
14. AARP grant award - Songbird Garden
15. Perpetual Right-of-Way Easement from TREH Commercial
16. Second/Final Reading Ord. – ZC 1052 – Zimmerman Trail
17. Second/Final Reading Ord. – Ward Boundary Expansion-Amended Ridgeline Subdivision Annexation

#### REGULAR:

2. PH and RES to vacate Block 51, Fosters Addition Alley
3. PH and 1<sup>st</sup> Reading ORD – BMCC – Parking (from 7/22 meeting)
4. Aquatic Analysis
  - a. Splash Pad
  - b. South Park Pool

### August 19, 2024 – WORK SESSION

1. CD Board role and responsibilities (divide into 2 sessions)
  - Eligible CDBG activities
  - HOME Investment Partnerships Program
  - Consolidated Plan, Annual Action Plans, and Requirements
  - HUD principles
  - CDBG Timeliness, pandemic changes
  - Regulatory compliance
  - Grants versus loans
  - Conflict of Interest
  - Consolidated Plan components

- Foreclosure program, including MDOC repayments (restricted to foreclosures)
- First Time Home Buyer
- AmeriCorps VISTA
- 2. South Billings Urban Renewal Association - Sports Complex (Dick Zier)
- 3. South TIF Expansion Discussion (This meeting or on Sept. 3<sup>rd</sup>)

## **August 26, 2024 - REGULAR BUSINESS**

### **CONSENT:**

1. BID AWARD: City Vehicles
2. Billings Metropolitan Planning Organization Title VI Assurance
3. Resolution Establishing a Procedure for the Disposition of Unclaimed Property

### **REGULAR:**

1. PH and RES creating the City of Billings Planning Commission (Continued from June 24<sup>th</sup>) Not in AQ
2. TIF Assistance to the Alberta Bair Theatre from the Downtown Tax Increment Fund
3. TIF Assistance to the Babcock Theatre from the Downtown Tax Increment Fund
4. TIF Assistance to the Billing Depot from the Downtown Tax Increment Fund

## **September 3, 2024 (Tues.) – WORK SESSION**

1. Tax Abatement Policy (Patrick / Dianne, BSEDA/Chris) **WYNNETTE CONFIRMED, GOOD TO GO!**
2. South TIF Expansion Discussion
3. Potential Strategic Plan Update?
4. Council Discussion

## **September 9, 2024 - REGULAR BUSINESS**

### **CONSENT:**

- 1.

### **REGULAR:**

1. Council Goals and Strategies???
- 2.

## **September 16, 2024 – WORK SESSION**

### **CLOSED EXECUTIVE SESSION 4:30 – 5:30 PM**

1. Budget and Employee Pay – Kennedy's Initiative
2. Council Discussion

## **September 23, 2024 - REGULAR BUSINESS**

### **CONSENT:**

1. Settlement Agreement with Christopher Tucker - 802 Yellowstone Ave. Nuisance Complaint
2. Resolution – Tax Abatement Policy Update

### **REGULAR:**

- 1.



**October 7, 2024 – WORK SESSION**

**CLOSED EXECUTIVE SESSION 4:30 – 5:30 PM CA Annual Review**

1. Council Discussion

**October 15, 2024 - REGULAR BUSINESS**

**CONSENT:**

- 1.

**REGULAR:**

- 1.

**October 21, 2024 – WORK SESSION**

- 1.
2. Council Discussion

**October 28, 2024 - REGULAR BUSINESS**

**CONSENT:**

- 1.

**REGULAR:**

- 1.

**November 4, 2024 – WORK SESSION**

- 1.
2. Council Discussion

**November 12, 2024 (Tues.) - REGULAR BUSINESS**

**CONSENT:**

- 1.

**REGULAR:**

- 1.

**November 18, 2024 – WORK SESSION**

- 1.
2. Council Discussion

**November 25, 2024 - REGULAR BUSINESS**

**CONSENT:**

- 1.

**REGULAR:**

- 1.

**December 2, 2024 – WORK SESSION**

**CLOSED EXECUTIVE SESSION 4:30 – 5:30 PM**

- 1.
2. Council Discussion

**December 9, 2024 - REGULAR BUSINESS**

**CONSENT:**

1. Beartooth RC&D MOU

**REGULAR:**

- 1.

**December 16, 2024 – WORK SESSION (Vacate?)**

- 1.
2. Council Discussion

**December 23, 2024 - REGULAR BUSINESS**

**CONSENT:**

- 1.

**REGULAR:**

- 1.

\*\*\*\*\*

**January 2, 2024 (Tues.) – WORK SESSION**

1. Administration of Oaths and Affirmations of Office for reelected Councilmembers
2. DES Emergency Management Update (K.C. Williams)
3. Ordinance Amendments to Water and Wastewater Utilities
4. Stormwater Billing
5. Council Discussion

**January 8, 2024 - REGULAR BUSINESS**

**CONSENT:**

- A. Bid Award: W.O. 24-03: Contract 2 Chip Seal / Scrub Seal
- B. Bid Award: W.O. 23-46: Compost Facility Waterline
- C. Purchase Water Reclamation Facility Equipment – Disinfection parts
- D. City-County Special Investigations Unit (CCSIU) Agreement for 2024
- E. W.O. 19-42: WE Water Treatment contract - Dick Anderson
- F. Bureau of Reclamation WaterSMART Small-Scale Water Efficiency Projects
- G. Donations to Library
- H. MT FWP trail stewardship grant application
- I. Northwestern Energy easement for Mountview Cemetery
- J. ~~Easements North 28th Street~~

**REGULAR:**

2. PH and 1<sup>st</sup> reading ORD – Cemetery Code changes
3. PH and 1<sup>st</sup> reading ORD – ZC 1040 - 1404 and 1406 Avenue B
4. PH and 1<sup>st</sup> reading ORD – Special Review 998 – 1406 Avenue B
5. Nomination and Election of Deputy Mayor Pro Tempore

**January 16, 2024 (Tues.) – WORK SESSION at the Library!**

1. Crime Prevention Round Table Discussion – focused on Crime Prevention
2. Council Discussion

**January 22, 2024 - REGULAR BUSINESS**

**CONSENT:**

1. Change Order 1 – New City Hall Access Control and Camera System
2. Contract for Airport Master Plan update
3. Memorandum of Understanding with Yellowstone County - West End Neighborhood Plan Update
4. Amendment to Memorandum of Understanding with the Yellowstone Conservation District for West End Reservoir Master Plan
5. Amend Park Development Council 2024 Proposed Budget
6. Federal Aviation Administration Airport Improvement Program Grants
7. Montana Community Reinvestment Plan Act Planning Grant (SB 382) growth policy
8. Donation to Parks from Billings Go Kickball to Youth Scholarship Fund
9. Donation to Parks from Scheels for Youth Scholarship Fund
10. Release of Perpetual ROW Easements - North 28th Street
11. Preliminary plat extension request for Annafeld North Subdivision, 2nd Filing
12. Resolution Authorizing the Filing and Acceptance of Transit Grant Funds and Related Documents
13. Resolution Authorizing the Issuance and Private Negotiated Sale of Expanded North 27th Street Tax Increment Bonds
14. Resolution of Intent to Create District and Set a Public Hearing-SID 1427
15. Resolution of Intent to Create District and Set a Public Hearing-SID 1426
16. 2<sup>nd</sup>/ Final Reading ORD. – ZC 1040 – 1404 and 1406 Avenue B
17. 2<sup>nd</sup>/ Final Reading ORD amending Cemetery Rules and Regulations and Repealing ORD 03-5240

**REGULAR:**

2. PH - MT Dept. of Commerce Infrastructure Grant Application
3. PH and 1<sup>st</sup> reading ORD - BMCC Chapter 26 Water and Wastewater First Reading and Public Hearing
4. Appointments to Council Subcommittees and Boards and Commissions



**February 5, 2024 – WORK SESSION**

1. YC Short Term Jail Request
2. MRM update – Matt Lundgren
3. CRU and MRT Updates (Pepper and Banfield)
4. Family Violence Response Unit Update (St. John per Owen's Initiative)
5. CPTED (John Caterino, Mike Pigg and Wyeth Friday)
6. Council Discussion

**February 12, 2024 - REGULAR BUSINESS****CONSENT:**

1. Bid Award: Landon's Inclusive Playground and Phase II Parking Lot Poly Vista Park
2. Bid Award: W.O. 24-07: Safe Routes to School
3. Bid Award: W.O. 24-19: Arnold Drain Intake Structure
4. Purchase 8 Police Utility Vehicles from Duval Ford
5. Purchase Night Vision Systems for Police S.W.A.T. Team
6. Contract for Uniform Rental / Purchase and Laundry Services for Public Works
7. Contract for scanning services with DIS Technologies
8. Contract for New City Hall Elevator Modernization
9. Amendment 15 with Morrison-Maierle, Inc. for Engineering Services to Construct Cargo Ramp Slot 5
10. Amendment 16 with Morrison-Maierle, Inc. for Engineering Services to Rehabilitate Aviation Place Access Road
11. Fire grant from State Farm
12. Annual Certified Local Government Grant Program for Historic Preservation
13. Second Reading BMCC Water and Wastewater

**REGULAR:**

2. PH and RES Creating SID 1426, Arvin Lane
  - a. Bid Award: SID 1426, Arvin Lane
3. PH and RES Creating SID 1427, Hancock Drive
  - a. Bid Award: SID 1427, Hancock Drive
4. New City Hall Security and additional updates (Kevin)
5. Gifting land to YVAS Discussion (Chris)

**COUNCIL INITIATIVE - BUILT Environment - CM Rupsis****February 20, 2024 (Tues.) – WORK SESSION**

1. City Ordinance Amendments – Code Enforcement (Tina Hoeger)
2. Montana Land Use Planning Act (SB 382) Wyeth
3. PMD Assessment Approval Discussion (Per Rupsis's question)
4. Short Term Detention Center Discussion
5. Retreat Prep Discussion
6. Council Discussion

**February 26, 2024 - REGULAR BUSINESS****CONSENT:**

1. Boards and Commissions
2. BID AWARD: W.O. 24-01: Contract 1: 2024 Billings Water Main Replacement
3. BID AWARD: W.O. 24-03: Contract No 2 City Chip/Scrub Seal
4. BID AWARD: W.O. 24-11: WRF Solids Process Building Roof Replacement
5. Purchase of 2024 Asphalt Roller – Public Works
6. Purchase of 3 New Vehicles - Public Works - Engineering
7. Contract W.O. 24-21: 1st Ave N Two-Way Conversion Feasibility Study – Sanderson Stewart
8. Funding, Maintenance, Construction and Local Agency Guidelines MDT Agreement - Stagecoach Trail
9. West End Hangar Ground Leases with Beacon Air Group, LLC
10. Donation from the Yellowstone County DUI Task Force to Police Dept.
11. Donation from Streeter Brothers Insurance to Senior Scholarship Fund to Parks
12. Preliminary Plat Extension for Hunters Point Sub
13. Resolution – June Ballot - Local Government Review
14. Letter to County Re Jail discussion re: short-term holding

**REGULAR:**

2. PH – Low-income Multi-family rental housing (No Action) (Bjornson Jones Mungas Law office)
3. PH & RES for Nuisance Property Abatement Assessments
4. PH & RES for Weed Assessments
5. PH and 1<sup>st</sup> Reading ORD – ZC 1042, 655 West Wicks Lane

**March 4, 2024 – WORK SESSION (Mayor out of town this week)**

1. SBURA Update – Recreation Center Next Steps (Dick Zier, SBURA)
2. 2024-2028 Transportation Improvement Program Review (Lora Mattox)
3. Update on upcoming Council retreat - Chris
4. Council Discussion

**March 11, 2024 - REGULAR BUSINESS****CONSENT:**

1. BID AWARD: W.O. 24-02: Missing Sidewalk Project
2. BID AWARD: 1709 St. Johns Ave. – Housing Rehab Project
3. Agreement with United Diagnostic Services for Medical Evaluation /Diagnostic – Fire
4. MOU with Little League Baseball and Softball
5. MOU with Annafeld Homeowners Association
6. 2024-2028 Transportation Improvement Program
7. AmeriCorps Vista Project Grant Application Submittal
8. Inflation Reduction Act Forest Grant
9. Preliminary Minor Plat - Zimmerman Home Place Subdivision, 4th Filing
10. Resolution Ordering Improvements - W.O. 24-02: Missing Sidewalk Program
11. 2<sup>nd</sup>/Final Reading ORD – ZC 1042 – 655 West Wicks Lane

**REGULAR:**

2. PH & RES. rescinding Resolution 90-16317, Hogan Homestead (Continued)
3. PH & 1<sup>st</sup> Rdg. ORD. - Stormwater Billing
4. PH for Sale of City Hall, South Parking Lot, and North Parking Lot
5. Downtown Billings Partnership - Tax Increment Assistance - Rockman Hotel Project
6. EBURD - Tax Increment Assistance – 320 North 17<sup>th</sup> Street

**March 15, 2024 - Council Retreat at Rock 31 (Noon – 6:30 PM)****March 16, 2024 - Council Retreat at Rock 31 (8:00 AM – 1:00 PM)****March 18, 2024 – WORK SESSION****CLOSED EXECUTIVE SESSION 4:30 – 5:30 PM**

1. Bicycle and Pedestrian Advisory Committee Annual
2. Permanent Supportive Housing Discussion (Dean Wells from United Way and CoC)
3. Art House / Babcock Theater Discussion
4. Zoom – Public Comment Discussion
5. Council Discussion

**March 25, 2024 - REGULAR BUSINESS****CONSENT:**

1. BID AWARD: Airport Cargo Ramp Slot 5
2. Amendment No. 5, W.O. 19-42: West End Water Treatment Plant Project
3. W.O. 24-28: Water Treatment Plant Sediment Hauling
4. Non-Commercial Aviation Ground Lease with Agri-Systems
5. Lease Purchase Agreement with MT Board of Investments to finance New City Hall Improvements
6. Commercial and Roll-off Container Purchases

7. Purchase 95-gallon Residential Refuse Carts for SW
8. Donations to Billings Public Library
9. Donation to Parks from Addie Allen
10. Donation to Parks from United States Tennis Association of Montana
11. Donation from Scheels for K9 Operations
12. Fire - Plains Pipeline Grant
13. Fire - Phillips 66 Grant
14. Preliminary Major Plat – Skyview Ridge, 2<sup>nd</sup> Filing
15. Resolution of Intent to Create SID 1425 Broso Park and Gabel Traffic Signal
16. 2<sup>nd</sup> Reading Ordinance Amending BMCC, Art. 22-800, Storm Sewers

**REGULAR:**

2. PH - MT Dept. of Commerce Infrastructure Grant Application
3. PH and 1<sup>st</sup> Reading - ZC 1043 – 4190 S. Frontage Rd.
4. Joint PH
  - a. RES Annexation 24-01
  - b. 1<sup>st</sup> Reading ZC 1044 – 5900 Block of Grand Ave.
  - c. ~~Annexation Agreement – George Jurevich~~ (add to April 22)
  - d. PH and 1<sup>st</sup> Reading – Ward Boundary Expansion – Annexation 24-01
5. Joint PH
  - a. RES Annexation 24-02
  - b. 1<sup>st</sup> Reading ZC 1045 – 4524 Central Avenue
  - c. Annexation Agreement – Brown Builders, LLC
  - d. PH and 1<sup>st</sup> Reading – Ward Boundary Expansion – Annexation
6. PH – 1<sup>st</sup> Reading – ZC 1046 – 1202 West Wicks Lane (May be continued to the 22<sup>nd</sup>)

**April 1, 2024 – WORK SESSION**

1. Chase Hawks and Visit Billings (Alex Tyson) - economic impact study (Burn the Point event)
2. MOU with Hoodies 4 Heroes /Dehler Park Memorial
3. Joint Drone Program (Mark Solberg/FD)
4. Safe Routes to School (Elyse Monat)
5. Parks Recreation update for 2024 programs
6. Council Discussion

**April 8, 2024 - REGULAR BUSINESS**

**CONSENT:**

1. BID AWARD: W.O. 23-33 Grandview Park Irrigation System Replacement
2. BID AWARD: W.O. 24-01: Contract 3, Cedar Park Water Main Replacement
3. BID AWARD: W.O. 24-27: 2024 Water Service Repairs
4. BID AWARD: Aviation Place Road Rehabilitation
5. BID AWARD: MET Transit Office Addition and Remodel
6. BID AWARD: Pioneer Park Tennis Court Replacement Project
7. Contract with TeleData Technologies - New City Hall Audio Visual Systems
8. MOU with Hoodies 4 Heroes for Memorial at Dehler Park
9. Agreement with Yellowstone County to Provide Law Enforcement Data Processing
10. Amend Park Community Garden grant – Parks Department
11. Safe Routes to School Plan Update, Phase 2, recommendation to PCC
12. Boundary Line Relocation between City Parking Lot and Grand Building
13. 2<sup>nd</sup> Reading Ord. Ward Boundary Expansion – Annexation 24-01
14. 2<sup>nd</sup> Reading Ord. Ward Boundary Expansion – Annexation 24-02
15. 2<sup>nd</sup> Reading Ord. ZC 1043
16. 2<sup>nd</sup> Reading Ord. ZC 1044
17. 2<sup>nd</sup> Reading Ord. ZC 1045
18. 2<sup>nd</sup> Reading Ord. ZC 1046
19. Resolution authorizing the issuance and sale for refunding Series 2013A bonds

**REGULAR:**

2. PH – Land Use Contrary to Zoning for HomeFront - 302 Sioux Lane
3. PH and 1<sup>st</sup> Reading - City Ordinance Amendments – Code Enforcement
  - a. 18-300, Nuisances



- b. 18-1100, Graffiti
  - c. 18-1400, Boarded up structures
- 4. Resolution establishing graffiti fund
- 5. Cottonwood Park Master Plan (Tabled)

#### **April 15, 2024 – WORK SESSION**

- 1. Community Impact of Legalized Marijuana – Ben Cort
- 2. CGL – Efficiency Study – Court and Legal
- 3. Zoning Code Update to Comply with SB 245 (2023)
- 4. Disposal of Lampman Park
- 5. Council Discussion

#### **April 22, 2024 - REGULAR BUSINESS CHRIS OUT**

##### **CONSENT:**

- 1. Boards and Commissions
- 2. BID AWARD: W.O. 23-23: Briarwood H2S Mitigation
- 3. BID AWARD: W.O. 24-01, Contract 2: 2024 Sewer Main Replacement Project
- 4. BID AWARD: W.O. 24-10 and W.O. 22-22: 2024 Annual Street Reconstruction
- 5. BID AWARD: (2) 2024 37,000 GVW Single Axle Trucks with Dump/Sander/Plow
- 6. Consulting Agreement with DOWL - Heights Neighborhood Plan Update
- 7. ~~Amendment 1, WO 24-01: Contract 2, Sewer Main Replacement~~
- 8. MOU Extension with 3 TIF Boards
- 9. ~~MOU with BBWA for DNRC Grants~~ (Delayed to May 13<sup>th</sup> to be brought back as a single grant, rather than a blanket MOU for all DNRC grants)
- 10. Acceptance of CRU backup vehicle
- 11. Donations to the Billings Public Library
- 12. Donation to the Billings Police Department
- 13. Donation for Poly Vista Park
- 14. Release of Right-of-Way Easement on Tract 2A-1 of the Amended Plat of Tract 2A of COS 2063
- 15. Annexation Agreement with C&T Equipment Holding, LLC – Annexation 24-01
- 16. Resolution ordering improvements to W.O. 22-22: 10<sup>th</sup> Avenue South and S. 30<sup>th</sup> St.
- 17. 2<sup>nd</sup> Reading ORD – Code Enforcement Amendment – Graffiti
- 18. 2<sup>nd</sup> Reading ORD – Code Enforcement Amendment – Boarded up structures
- 19. 2<sup>nd</sup> Reading ORD – Code Enforcement Amendment – Nuisances

##### **REGULAR:**

- 2. Public Hearing and Approval of FY24-FY25 Annual Action Plan including CDBG & HOME Budget Allocations
- 3. PH and RES. rescinding Resolution 90-16317, Hogan Homestead (Continued from 3.11.24)
- 4. SID 1425, Broso Park and Gabel Road Traffic Signal
  - a. PH and RES. SID 1425, Broso Park and Gabel Road Traffic Signal
  - b. Bid Award: SID 1425, Broso Park and Gabel Road Traffic Signal
- 5. PH and 1<sup>st</sup> Rdg. ORD. ZC 1049 – 1911 & 1915 8<sup>th</sup> Ave. N.
- 6. PH and 1<sup>st</sup> Rdg. ORD. ZC 1050 – Hawk Creek Ave.
- 7. TIF – EBURD, 204 N. 13<sup>th</sup> Street, 1889 Brewery

**\*\*Judge Kolar would like to be first during budget meetings**

#### **May 6, 2024 (BUDGET) – WORK SESSION**

- 1. Overview
- 2. Municipal Court
- 3. Library
- 4. Aviation and Transit
- 5. General Fund Internal (Admin., HR, Finance, Mayor and Council)
- 6. Council Discussion

#### **May 7, 2024 Tuesday (BUDGET) – SPECIAL WORK SESSION**

- 1. Fire

2. Police
3. Facilities
4. Council Discussion

**May 13, 2024 - REGULAR BUSINESS**

**SPECIAL PRESENTATION:** Airport Update (Jeff)

**CONSENT:**

1. ~~BID AWARD: WO 23-11: Downtown 2-way Street Conversion~~
2. BID AWARD: 1709 Saint John's Ave. Housing Rehabilitation Project
3. BID AWARD: Waterborne Traffic Paint
4. BID AWARD: IP 9 Building Window Replacement Project
5. BID AWARD: Castle Rock Park North Parking Lot Repair
6. BID AWARD: MET Transit Electric Bus Charger
7. BID AWARD: MET Transit Video Surveillance
8. Agreement with Northwest Pipe Fittings for AMR Neptune/AMI Software Hosting
9. Agreement with Tractor and Equipment for Landfill Compactor Powertrain
10. MOA with BBWA for DNRC Rim Tunnel Alternative Feasibility Study Grant
11. Fire Dept. YVEC Grant
12. Donation to PD from Billings Community Foundation to Support The SWAT Medic Program
13. Emergency RES for WO 24-39: Heights 24-inch sewer rehab
14. RES adopting contract limits – Foreclosure Acquisition / Rehab program
15. Second/Final Rdg. ORD ZC 1049 – 1911 & 1915 8<sup>th</sup> Ave. N.
16. Second/Final Rdg. ORD ZC 1050 – 5403 Hawk Creek Ave.

**REGULAR:**

1. PH and RES of Intent to Donate Property in Whisper Ridge Sub.
2. PH and RES to adopt the City of Billings Public Participation Plan
3. PH and 1<sup>st</sup> Rdg. ORD - Amending BMCC Sec. 24-426 and 24-431 - Parking

**May 20, 2024 (BUDGET) – WORK SESSION**

1. Storm Water Program
2. Planning / Code Enforcement / Community Development / Public Works
3. Council Discussion

**May 21, 2024 (Tuesday) (BUDGET) – SPECIAL WORK SESSION**

1. Parks and Recreation, Legal, Tax Increment Funds and Budget Wrap Up
2. Council Discussion

**May 28, 2024, (Tuesday) REGULAR BUSINESS**

**Courtesies** – Award for Steve McConnell – Parks Forestry from Patrick Plantenberg from MT Urban and Community Forestry Assn. (Don't put on the Agenda – to be a surprise, but remind the Mayor)

**SPECIAL PRESENTATION:** Thorne Run

**CONSENT:**

1. Boards and Commissions: TBID
2. BID AWARD: W.O. 20-13: King Ave. W. and 36<sup>th</sup> St. W. Traffic Signal Improvements
3. BID AWARD: W.O. 24-24: Voelker Pump Station Pressure Reducing Valve
4. Amendment No. 1 - W.O. 24-01, Contract 2: 2024 Sewer Main Replacement Professional Services Agreement with Morrison-Maierle
5. Contract with Signal of Montana for Library
6. Purchase of FY25 Solid Waste Refuse Trucks
7. Surplus Disposal of 300-Gallon Waste Containers to Powell, WY
8. 2024 HIDTA Award for PD
9. Donations - Graffiti reward fund
10. Donations – Mobilize the MAGIC City Project

11. Easement from Billings Public Schools for the Rose Park Trail
12. Prelim. Minor Plat – Broso Valley Park Sub.
13. Prelim. Minor Plat – Les Schwab Sub.
14. Final Plat - Annafeld Sub., 5<sup>th</sup> Filing
15. Resolution Authorizing the Sale and Prescribing the Form and Terms for the Expanded North 27th Street Refunding Bonds
16. Second/Final Reading ORD – Amending Parking Sections

**REGULAR:**

1. PH and RES for FY25 SW Collection and Landfill Fees
2. PH and 1<sup>st</sup> Rdg. ORD for Zone Change 1041 – SB 245 Text Amendments
3. PH and 1<sup>st</sup> Rdg. ORD for Zone Change 1047 - Copper Ridge 7th & 8th Filing
4. BID AWARD: W.O. 23-11: Downtown 2-way Street Conversion
5. MOU with Yellowstone County Short-Term Holding Facility

**June 3, 2024 – WORK SESSION**

1. Yellowstone River Parks Association (YRPA) Presentation – Mike Pigg
2. Adoption - International Fire Code (Make an Administrative Order)
3. Fire and Police Dept. 2023/24 Annual Report
4. Proposed City Subdivision Regulation Amendments (Dave Green)
5. Council Discussion

**June 17, 2024 – WORK SESSION (Chris out)**

**CLOSED EXECUTIVE SESSION 4:30 – 5:30 PM**

1. Pedestrian/Bike Master Plan Progress Report
2. SIDs – Gravel Roads
3. Council Discussion

**June 24, 2024 - REGULAR BUSINESS**

**CONSENT:**

1. Boards and Commissions
2. BID AWARD: 2024 Deice Truck
3. FY25 Landfill Use Agreements
4. Amendment 1 to MDT agreement for Rimrock and 62<sup>nd</sup> St. W.
5. Professional Services Agreement with DOWL for W.O. 24-26: Stormwater Master Plan - Phase I
6. Perpetual Right-of-Way Easement from Patterson Land & Livestock Co.
7. Resolution Financing and Historical Tax Credit Investment for the new City Hall
8. Resolution approving Municipal Court Judges salaries - **FAILED**
9. Second Reading Ord Amending BMCC, Article 22-800, Storm Sewers

**REGULAR:**

1. PH regarding Low-Income Multifamily Housing Project - Aurora Apartments
2. PH and RES Ridgeline Subdivision Annexation Boundary Adjustment
3. PH and RES adopting FY25-FY26 PW Right-of-Way Fees
4. PH and RES setting FY25 Annual Street Maintenance District Assessments
5. PH and RES creating the City of Billings Planning Commission **(Continued to July 22<sup>nd</sup>)**
6. PH and RES allocating:
  - a. FY25 BID1 Assessments
  - b. FY25 TBID Assessments

**July 1, 2024 – WORK SESSION**

1. Proposed City Subdivision Regulation Amendments-Part I (Dave Green)
2. ~~Parks and Rec. Aquatic Study Results (Mike Pigg)~~
3. Council Discussion

**July 8, 2024 - REGULAR BUSINESS**

**CONSENT:**

1. BID AWARD: W.O. 23-12: Zone 4 Pump Station and Waterline Improvements



2. BID AWARD: W.O. 24-18: Central Avenue Water Main Extension
3. BID AWARD: W.O. 25-03: Contract 1 City Overlay
4. Purchase of 8 Refuse Trucks
5. Community 7 contract
6. Northern Lights Family Justice Center Agreement
7. MOUs with Career Center, Billings Central for SROs
8. Graffiti reward fund donation acceptance
9. Cancellation of Checks and Warrants
10. Perpetual Right-of-Way Easement from G2 Investments LLC

**REGULAR:**

1. PH for Homeword – Lucy's Lofts
2. PH and RES for Fees Associated with Various Services Provided by the Planning and Engineering Divisions
3. SBBURD TIF Assistance for Billings Hotel and Convention Center
4. Mitchell Court:
  - a. HOME funding to Mitchell Court, LLLP for Mitchell Court Affordable Housing Project
  - b. SBBURD TIF Assistance for Mitchell Court Apartments

**July 15, 2024 – WORK SESSION CANCELED**

1. Friends of the Children Program Information (Chris)
2. Law Enforcement – CPTED principles (Nate West)
3. Council Discussion

**July 22, 2024 - REGULAR BUSINESS CHRIS OUT**

**CONSENT:**

1. BID AWARD: W.O. 24-38: Wicks Lane Stormwater Improvements, Phase II
2. BID AWARD: W.O. 22-44: Zone 1, Water Storage Improvements, Schedule 1
3. BID AWARD: W.O. 22-44: Zone 1, Water Storage Improvements, Schedule 2
4. BID AWARD: 2025 58,000 GVW 12-Yard Dump Truck
5. Amendment 3 – Mead and Hunt (Airport)
6. Scheduled Airline Operating Agreement/Terminal Building Lease with Sun Country
7. Water Line Agreement with County Water District for reimbursement funds
8. Teamsters Local 190 Collective Bargaining Agreement
9. Community Change in the Billings EBURD and North Park Neighborhoods
10. Acknowledge Receipt of Petition to Vacate Block 51 Foster's Addition Alley and set a Public Hearing
11. Perpetual Right-of-Way Easement from G2 Investments, LLC
12. Final Plat – Lake Hills Sub., 40<sup>th</sup> Filing
13. Resolution Authorizing the Sale and Prescribing the Form and Terms for the Expanded North 27th Street Bonds

**REGULAR:**

2. ~~PH and 1<sup>st</sup> Reading ORD – BMCC – Parking~~ **REMOVED**
3. PH and 1<sup>st</sup> Reading ORD - Zone Change 1052 - Zimmerman Trail
4. PH and 1<sup>st</sup> Reading ORD - Ward Boundary Expansion Ordinance - Amended Ridgeline Subdivision Annexation
5. Resolution accepting Cottonwood Master Plan
6. Reconsideration - RES. Approving Municipal Court Judges' Salary Increase
7. Kennedy's Initiative – Budget and Employee Pay